

# **Shipping Ground Freight Web Services Developers Guide**

31 December 2012



**Notice**

In all communications with UPS concerning this document, please refer to the document date located on the cover.

**Copyright**

The use, disclosure, reproduction, modification, transfer, or transmittal of this work for any purpose in any form or by any means without the written permission of United Parcel Service is strictly prohibited.

© Copyright 2012 United Parcel Service of America, Inc. All Rights Reserved.

**Trademarks**

UPS OnLine® is a registered trademark of United Parcel Service of America, Inc. All other trademarks are the property of their respective owners.

Some of the UPS corporate applications use U.S. city, state, and postal code information obtained by United Parcel Service of America, Inc. under a non-exclusive license from the United States Postal Service.

## Table of Contents

1.1 Important Information.....	4
1.2 Welcome to the Shipping Ground Freight Developer's Guides.....	5
1.2.1 What's New for Shipping Ground Freight in January 2013.....	5
1.2.2 How to Use this Guide.....	7
1.3 Business Processes and Rules.....	7
1.4 Required Steps for Integrating WebServices.....	8
1.5.1 WebServices Applications.....	8
1.5.2 Licensing the UPS Developer API WebServices .....	10
1.5.2.1 Branding Requirements .....	10
1.5.2.2 UPS Review of Applications .....	10
1.5.3 Developing Web Services Clients .....	11
1.5.4 Getting Technical Support.....	13
1.5.5 Keeping Up-to-Date.....	15
1.6 UPS Developer API Technologies for WebServices.....	16
1.6.1 Extensible Markup Language (XML).....	16
1.6.2 Simple Object Access Protocol (SOAP).....	17
1.6.3 Web Services Definition Language (WSDL) .....	18
1.6.4 Securing Web Services .....	20
1.6.5 Indicating Errors in Client Application Requests .....	23
1.7 Understanding Freight Web Services .....	24
1.7.1 Processing Freight Shipments.....	24
1.7.2.1 PRO Numbers .....	24
1.8 The Freight Ship WebServices Reference .....	25
1.8.1 Freight Ship Web Services Schema.....	26
1.9 Customer Integration Environment.....	125
1.10 Ground Freight Certification for Test Cases.....	125
Appendix A - Accessing Tech Support (US Site) .....	130
Appendix B – Freight Ship WebServices Error Codes.....	134
Appendix C – Freight Packaging Type.....	141
Appendix D – Freight Charge Codes.....	142
Appendix E – Freight Reference Number Codes .....	143
Appendix F – Freight Billing Option Codes.....	144
Appendix G – Freight Classes .....	145
Appendix H – Ground Freight Service Codes .....	146
Appendix I- Handling Unit Codes .....	147
Appendix J- COD Billing Option Codes .....	148
Appendix K- COD Payment Method Codes.....	149
Appendix L – Pickup Notifications for LTL POMNumberTypes Values.....	150
Appendix M – Pickup Notifications for LTL Event Types .....	151
Appendix N - Frequently Asked Questions: Shipping Ground Freight.....	152

## 1.1 Important Information

### UPS Developer APIs

*Your development of an application using the UPS Web Service APIs are governed by the UPS Technology Agreement or UPS Customer Technology Agreement you entered into with UPS. The following are key legal requirements from these agreements for the UPS Web Service APIs. For more information on all requirements for the UPS Web Service APIs, please refer to the UPS Technology Agreement or the Customer Technology Agreement.*

### Key Legal Requirements for UPS Developer APIs

#### *Permitted Territories*

This document can only be used in the countries listed in Exhibit C of the UPS Technology Agreement or UPS Customer Technology Agreement.

#### *Use*

The application must not be designed to allow distribution of information received through the UPS Web Service APIs to third parties, other than to persons having a bona fide interest in such information (e.g., the shipper, receiver or the third party payer).

#### *Consent to Use of UPS Mark*

- All screens or forms generated by your application including information received through the UPS Web Service APIs must include (1) the UPS Mark positioned in reasonable proximity to the Information and of an appropriate size to readily identify the source of the Information as UPS and (2) the following language at the bottom of every screen that displays the UPS Mark: "UPS, the UPS brand mark, and the Color Brown are trademarks of United Parcel Service of America, Inc. All Rights Reserved". Except as set forth in the preceding sentence, you have no right to use the UPS Mark without the prior written approval of UPS.
- You shall not use the UPS Mark in association with any third party trademarks in a manner that might suggest co-branding or otherwise create potential confusion as to source or sponsorship of the application, or ownership of the UPS Mark.
- The UPS Mark shall be used only as provided by UPS electronically or in hard copy form. The UPS Mark may not be altered in any manner, including proportions, colors, elements, etc., or animated, morphed or otherwise distorted in perspective or dimensional appearance.
- The UPS Mark may not be combined with any other symbols, including words, logos, icons, graphics, photos, slogans, numbers or other design elements. A minimum amount of empty space must surround the UPS Mark separating it from any other object, such as type, photography, borders, edges, etc. The required area of empty space around the UPS Mark must be  $1/3x$ , where  $x$  equals the height of the UPS Mark.

### ***Copyright and Proprietary Notice***

In your application and any POD Letters you prepare you must include a prominent reproduction of UPS's copyright and proprietary notices in a form and format specified by UPS (See Copyright Section of this document).

### ***Display of Information***

The application must not display information concerning any other provider of shipping services or such other shipping services on any page, whether comprising one or more frames, displaying information your application receives from the UPS Web Service APIs. Your application must present all data within each field received through the UPS Web Service APIs without amendment, deletion or modification of any type.

## **1.2 Welcome to the Shipping Ground Freight Developer's Guides**

Welcome to the UPS API Developer's Guides. This guide provides the information you need to begin using UPS Developer APIs.

UPS Developer APIs offer a fast and convenient way to access UPS service information using the Internet. With these Developer APIs, UPS lets you easily incorporate UPS technology in your own applications or your own web site. Your users—running your applications or visiting your web site—can have up-to-the-minute access to UPS services.

### **1.2.1 What's New for Shipping Ground Freight in January 2013**

#### ***Overview***

- A new time definite by noon service is now available - UPS Freight® LTL - Guaranteed A.M. (limited to specific destinations, validation completed when the shipment is submitted)
  - Service Code 334
- Time in Transit (# of days in transit) is now available for ground freight (LTL)
- Excess Declared Value amount can now be included on a shipment
- Perl and PHP code samples are included for your reference during development
- Technical Support Email Template Improvements
  - Optionally collect the customer's UPS Account Number, User ID and Access Key
    - Capture if UPS Ready Provider (Y/N); Default field selection to "N"
    - Update email application content on what the types of attachment is not allowed (EXE) for a logged-in user.
    - Include the Stage of Development (Pre-Integration, Integration, Post-Integration) in the email subject line (end of existing text); make Stage of Development a mandatory field.
    - Under Attach File inform the requester that XML Request and Response files should be included whenever possible.
- UPS Developer Kit Community
  - New System Status Page

- Customers can now register for the UPS Developer Kit Community and subscribe to the 'System Status Page' for proactive email alerts when system status changes occur (Note: UPS Developer Kit Community can be accessed from the UPS Developer Resource Center)
- New User Guide and Quick Reference Guide Available at UPS Developer Resource Center
  - There are now two new customer reference materials never before available. The first is a UPS Developer Kit User Guide, which takes the developer through the step by step process of gaining access to API documentation, testing/production environments, and available tech support resources. The second is a UPS Developer Kit Quick Reference Guide that summarizes at a very high level gaining access to the UPS Developer Kit and tech support resources.
    - New User Guide (comprehensive access guide)
    - New Quick Reference Guide (high level quick reference guide)

### ***New request elements***

- /FreightShipRequest/Shipment/ShipmentServiceOptions/ExcessDeclaredValue
- /FreightShipRequest/Shipment/ShipmentServiceOptions/ExcessDeclaredValue/CurrencyCode
- /FreightShipRequest/Shipment/ShipmentServiceOptions/ExcessDeclaredValue/CurrencyCode
- /FreightShipRequest/Shipment/ShipmentServiceOptions/ExcessDeclaredValue/MonetaryValue
- /FreightShipRequest/Shipment/TimeInTransitIndicator

### ***New response elements***

/FreightShipResponse/ShipmentResults/TimeInTransit (days in transit)  
 /FreightRateResponse/TimeInTransit/DaysInTransit  
 /FreightRateResponse/TimeInTransit  
 /FreightRateResponse/TimeInTransit/DaysInTransit

### ***New error codes***

9360079	Hard	UPS Freight® LTL Guaranteed A.M. service is not valid for the destination postal code you entered.
9360080	Hard	Shipment is not eligible for LTL guaranteed service.
9360081	Hard	Shipment is not eligible for UPS Freight® LTL Guaranteed A.M. service.
9360082	Hard	LTL guaranteed Service not available.
9368780	Hard	Invalid ship date. Ship date should not be in the past.
9368781	Hard	Invalid numbers of handling units. Should be between 1 and 9999.

9368782	Hard	Invalid request type. Valid values are L, F, B and P.
9368783	Hard	Invalid request party. Valid values are S, C and T.
9368784	Hard	At least one shipment is required.
9368785	Hard	Please contact UPS Freight Customer Service for Rates at 800-333-7400
9368786	Hard	Please contact UPS Freight Customer Service for Rates at 800-333-7400
9368787	Hard	Invalid Ship From Address.
9360083	Hard	Invalid destination postal code, please verify and resubmit.
9368788	Hard	Shipment weight must be less than 10,000 lbs
9368789	Hard	Please contact UPS Freight Customer Service for Rates at 800-333-7400
9368790	Hard	Weight unit of measure is invalid

## 1.2.2 How to Use this Guide

If you are an experienced developer, you can begin developing applications quickly after reviewing "Required Steps for Integrating."

If you would like a more step-by-step guide to developing and deploying the Developer APIs, "Planning Your Applications" provides advice and describes options for developing and deploying applications and web sites that use UPS Developer APIs.

The "UPS Developer API Technologies" section explains key technologies on which the Developer APIs rely. That section also includes hints for using those technologies in various software development environments.

If you would like to learn more about what the UPS API covered in this guide can do for your applications, refer to the section on understanding the UPS API Services in this guide.

A complete technical reference to the Developer API covered in this guide is found in the API Reference section with details for the programming interfaces.

Additional material, including reference tables and lists, may be found in the appendices.

## 1.3 Business Processes and Rules

- Ground Freight does not offer void, label recovery or return services.
- Ground Freight does not offer Paperless Invoice.
- Must be registered at Ground Freight to see Negotiated Rates
- To be granted production rights to the Ground Freight APIs please follow the steps in the Developer's Guides and return to ups.com to complete approval and certification.

## 1.4 Required Steps for Integrating WebServices

The required steps for integrating the UPS APIs are listed here for UPS XML Services.

### UPS Web Services

Details for accessing UPS Developer API Web Services are defined within WebServices Definition Language (WSDL) files that are part of the UPS Developer Kit. Most modern development environments include support for automatically importing WSDL files and generating skeleton code to access the services. Although the specific details depend on the particular development environment, the general procedure is as follows.

1. Review the UPS Technology Agreement available at [www.ups.com](http://www.ups.com). This agreement requires that you follow certain procedures and practices in using UPS Developer API Web Services.
2. Import the WSDL files into the development APIs of choice. Depending on the specific API, this step will result in skeleton code (such as Java or C# classes) for accessing the Web Services
3. Add your functionality specific to your application and/or web site to the skeleton code.
4. Test your application and/or web site using the designated UPS staging environment.
5. If you are a UPS Ready developer, review your application with UPS.
6. Deploy your application for your customers.
7. Ensure the UPS Shipper Account number is added to the user's profile. This can be done at [myups.com](http://myups.com).

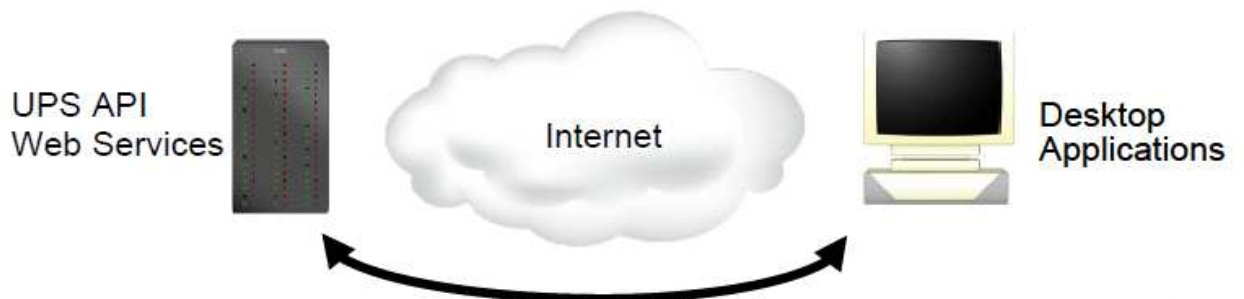
## 1.5 Planning Your Applications for WebServices

Planning is a key part of any successful development activity, and UPS WebServices applications are no exception. This section helps that planning by describing the important activities of any UPS WebServices application project. It provides an overview of the steps required to develop applications, and it describes key factors and choices necessary to deploy those applications.

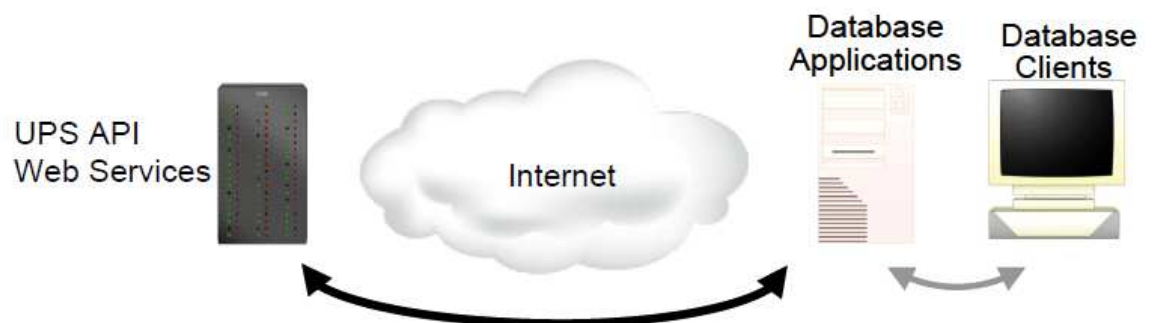
### 1.5.1 WebServices Applications

Many different types of applications can take advantage of WebServices. Those application types include dedicated desktop applications, databases, web applications, and documents. The following figures illustrate some of the possibilities for applications using UPS WebServices. The only essential requirement for all of these applications is that they must have access to the Internet.

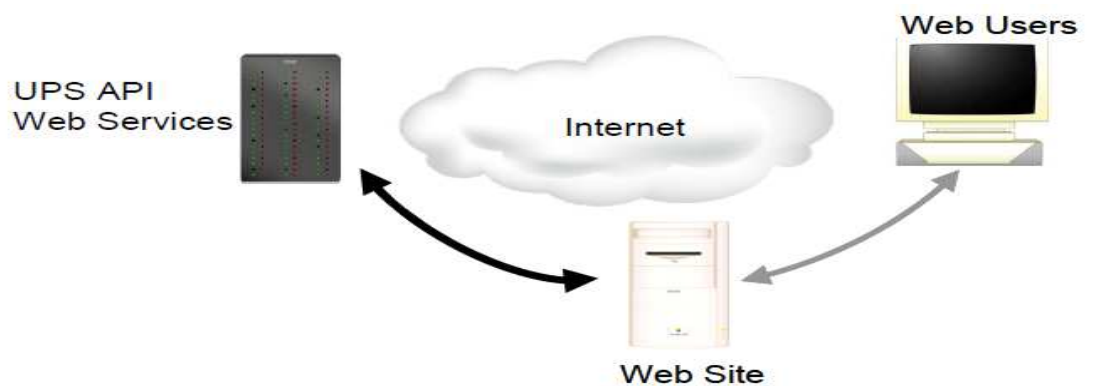




**Figure 1: Dedicated applications that users run on their desktops can access UPS Web Services.**



**Figure 2: Database applications can access UPS Web Services and return information to their clients.**



**Figure 3: Web sites can access UPS Web Services and return information to users' web browsers.**



**Figure 4:** Non-traditional applications such as Microsoft Office or Adobe Acrobat documents can use UPS Web Services to automatically update their content.

The UPS Developer APIs can be implemented withal of these types of applications and many others. Virtually any software that needs instant, up-to-date access to UPS services can take advantage of UPS API WebServices

## 1.5.2 Licensing the UPS Developer API WebServices

As part of the UPS Technology Agreement, users of the APIs have certain obligations that are spelled out within the service agreement and its exhibits. Regardless of the manner in which the UPS Developer API WebServices are integrated into your specific e-commerce web site or enterprise application, you must adhere to appropriate usage requirements.

### 1.5.2.1 Branding Requirements

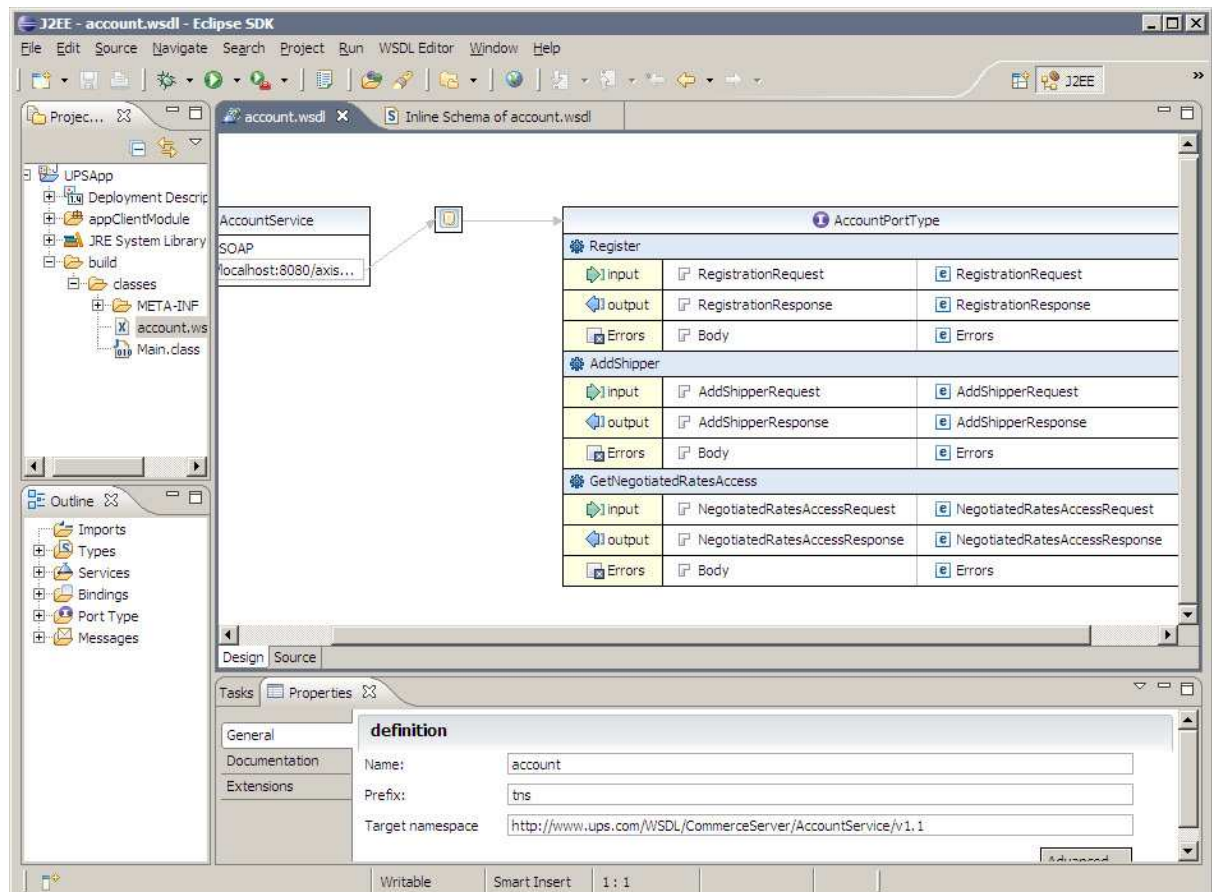
UPS should receive attribution and branding in all applications (including websites and software applications) that use the Developer API Web Services. No End User, Third Party Developer or Access User should be permitted to use the Developer API Web Services without providing branded recognition to UPS. Your use of the UPS logo can in no way imply endorsement, sponsorship or certification of your e-commerce web site or enterprise application by UPS. You are not allowed to use or alter the information returned by the UPS Developer API Web Service in a way that misrepresents the information or the functionality of the web service.

### 1.5.2.2 UPS Review of Applications

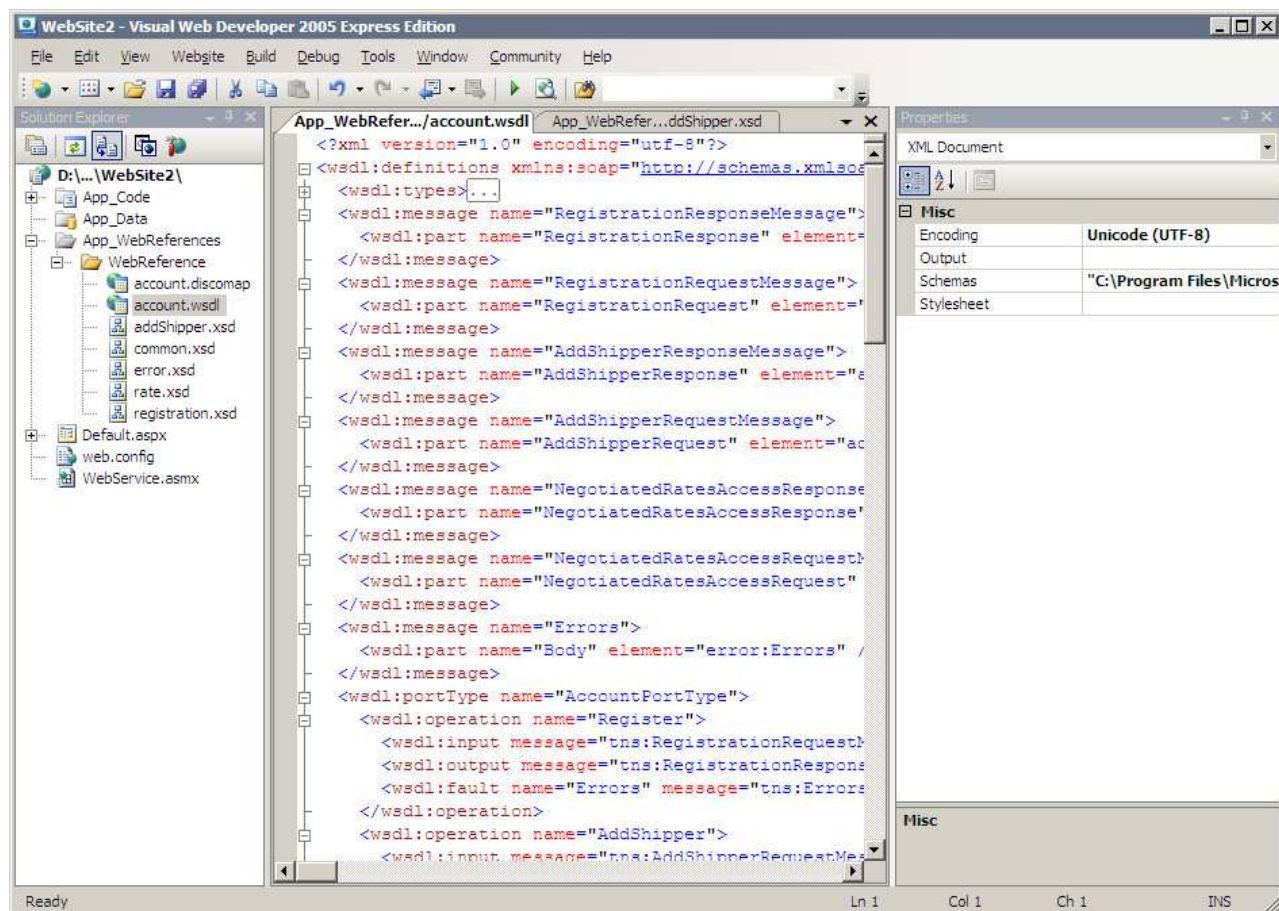
If you distribute your application as software, please provide UPS access to, or a copy of, your application (and/or any updates). If you host your application for the benefit of others, please provide the Uniform Resource Locator (URL) for each location of your application. If you build your own application, UPS might request the URL in order to review your application. UPS may review each application for compliance with the UPS Technology Agreement. See the Customer Integration Environment chapter for more information on the certification process.

### 1.5.3 Developing Web Services Clients

The UPS Developer API Web Services rely on standard Web Services technology that is supported by a wide variety of software development platforms. Those platforms vary from pure open source environments such as Apache Axis (see Figure 5) to commercial products from vendors such as Microsoft (Figure 6). Other development tools that support Web Services development include BEA WebLogic, Sun's NetBeans, and products from both major systems vendors including IBM and Hewlett-Packard and smaller, specialized vendors such as Altova, Cape Clear, and Stylus Studio. Many nontraditional environments such as Microsoft Office and Adobe Acrobat also include support for Web Services.



**Figure 5: The Eclipse Web Tools Platform (WTP) project provides support for Web Services in a Java development environment.**



**Figure 6: Microsoft's Web Visual Developer 2009 can create client applications for Web Services.**

With any particular development environment, key parts of the development process will be similar or the same. Web Services development relies on a technology known as Web Services Definition Language (WSDL). This technology is a formal language based on the Extensible Markup Language (XML). WSDL precisely and completely describes Web Services, and standard Web Services documents themselves by “publishing” one or more WSDL files. The UPS Developer APIs support three different Web Services, each of which it documents in a separate WSDL file. These WSDL files are included in the UPS Developer Kits, and can be imported directly into a software development environment. Note, though, that the default behavior of some tools is to retrieve WSDLs from a central repository accessible on the Internet, most often the Universal Description, Discovery and Integration (UDDI) at <http://uddi.xml.org/>. UPS does not publish its WSDLs through these repositories. As a result, the development tool should be directed to import the WSDL locally rather than through a public directory.

## 1.5.4 Getting Technical Support

### Technical Support (U.S.)

There are four channels for obtaining support for the UPS Developer Kit (UDK) APIs all of which are accessed through the **UPS Developer Resource Center** at the following link:

<http://www.ups.com/content/us/en/resources/techsupport/developercenter.html?WT.svl=SubNav>

Or by following these steps:

1. Go to [www.ups.com](http://www.ups.com).
  2. Mouse over the Support tab and select Technology Support
  3. In the left navigation panel of the page select the link “Developer Resource Center”.
- Email Technical Support – available in the right hand column on the **UPS Developer Resource Center** web page. This is *the* support channel for technical support and questions regarding API integration. It is accessed by logging in to myUPS and attaching your XML Request/Response files and any other pertinent information about your integration [please see Appendix A for detailed instructions and screen shots]. UPS Email Technical Support can only support the XML Request/Response pair. They cannot consult customers and developers on how to integrate the XML into their internal or purchased software.
  - UPS Developer Kit Community – available in the right hand column of the **UPS Developer Resource Center** web page. This is a community forum for developers to answer one another’s questions and share information therefore the response times may be slower. If you have an immediate need for technical support contact UPS Email Tech Support above and they will respond within 4 business hours (see hours below). The remainder of the site contains online versions of all API developer guides and FAQs.
  - UPS Developer Kit Knowledge Base – available in the right hand column of the **UPS Developer Resource Center** web page. This is a self-service support .pdf document that can be opened or downloaded. It contains over 240 frequently asked questions about every mode and service supported by the UDK APIs. It’s also available in an online version at the UPS Developer Kit Community.
  - General Question Phone Support (U.S. only) – available in the right hand column of the **UPS Developer Resource Center** web page. Phone support is the *least comprehensive* support mechanism for the developer. This channel of support addresses questions about the user interface at [ups.com](http://ups.com) and how to gain access to the APIs and navigate the Access Key request process. They do not provide technical support for XML Request/Response issues and questions. Those types of questions must go through Email Technical Support.



### Getting Started with Email Technical Support

1. Got to ups.com and log in to myUPS.
2. Hover over the “Support” tab and select “Technology Support”.
3. On the Technology Support page select the Developer Resource Center link from the left navigation.
4. On the Developer Resource Center page select the “Email UPS” link in the right hand column.
5. Enter all relevant information including name, enter email address, select Support Category “Technical Support”, and select Support Topic “Developer Resource” [which identifies UPS Developer Kit APIs tech support]. Click next.
6. Scroll down to the middle of the email form and complete the fields “Your Telephone”, “Stage of Development”, “Developer Resource” which is which API you are integrating, “Attach File” where you attach your XML Request/Response Pair, and any pertinent description of the issues in the “What is your question or comment?” field.
7. Select “Send Email” button.
8. A response is provided that explains someone from UPS will contact you. Please base the response time on the detailed information listed below about tech support hours of operation and response times.

(For screen shots of this process please see Appendix A at the end of this guide.)

### 1<sup>st</sup> Level Email Technical Support Business Hours and Response Times:

- a. Hours of operation for 1<sup>st</sup> Level Email Tech Support: 7:30am to 9pm EST Monday through Friday and 9am to 6pm EST Saturday and Sunday. The desk is closed on UPS Holidays.
- b. 1<sup>st</sup> Level Email Tech Support email response time is planned to be within 4 business hours of the initial request. Business hours are defined as hours of operation of the tech support desks when service technicians are working.

*This means if you submit an email tech support request after business hours the 4 hour response clock will not begin until the following morning at 7:30am EST M-F and 9am EST Saturday and Sunday (UPS Holidays excluded).*

#### **PLEASE NOTE:**

*If you are sent an email from 1<sup>st</sup> Level Email Tech Support stating your case log # has been escalated, the 24 hour planned response clock starts from the time you receive the email from 1<sup>st</sup> Level Email Tech Support (provided the Escalation Support desk is open). If not, then the clock will begin when the Escalation Support desk opens.*

### Escalation Support Business Hours and Response Times:

- c. Hours of operation: 8am to 8pm EST Monday through Friday. The desk is closed weekends and on UPS Holidays.

- d. Escalation Support desk response time is planned to be within 24 hours during normal hours of operation.

*This means if your case log is escalated at 8:30pm on Friday, you will not receive an email response from the Escalation Support desk at the latest until Monday at 8pm (Saturdays, Sundays, and Holidays are excluded). Response times are from the time the case log was escalated plus 24 hours which do NOT include the weekends or UPS holidays.*

There may be some scenarios when the tech support team is meeting planned response times but it appears as if it's taking too long. Below is a brief example where the planned response time is met but nothing happened over the weekend.

Example –

Customer submits tech support email at 7am on Friday. The clock for 4 hour response will not begin until 7:30am EST for the 1<sup>st</sup> level tech support team. They respond within 4 hours at 11:30am EST that same Friday stating the case log has been escalated and providing the case log #.

The escalation desk receives the case log at 11:30am EST. They begin work on evaluating the problem and have planned to either update the customer within 24 hours or solve the problem within 24 hours. Either way, the customer will hear from the escalation desk within 24 hours with some type of disposition on their case log. The escalation desk clock begins when they receive a case log from 1<sup>st</sup> level tech support during business hours, M-F 8am to 8pm EST. In this case, the clock begins at 11:30am EST if the escalation desk does not have an answer by 8pm EST on Friday the desk has until 11:30am EST the following Monday to either provide a resolution or a status update to the customer on the case log. The Escalation Desk continues work on the case log on Monday beginning at 8am EST. They receive resolution at 1030am EST Monday and send the resolution to the customer. The Escalation Desk has met their 24 hour planned response time.

### **Technical Support (Non-U.S.)**

For Non-US countries supported by the UPS Developer Kit follow the instructions in Appendix A. However, to get to the UPS Developer Resource Center page please complete the following steps.

1. Log in to myUPS for the country from which you downloaded the developer guides.
2. Select the Support tab and in the drop-down select Technology Support.
3. Select from the left navigation the “UPS Developer Resource Center” link.
4. Continue with email form as described above.

***Please also note that email response times for non-US requests vary. Translations and escalations may delay the process. If a quicker response is required, please access the US web site directly and complete an email technical support form from the US web site.***

## **1.5.5 Keeping Up-to-Date**

As UPS adds new services and features, Developer APIs will evolve, offering more features and service benefits. Once you register to use UPS Developer APIs, UPS will notify you by e-mail of updates and changes to the Developer APIs. It is essential that an accurate e-mail address for your company be maintained. In addition, UPS recommends that you complete the secondary contact information to ensure that your organization receives the latest updates. You should update your profile when changes or responsibilities for the UPS Developer APIs change within your company. You can also return to the UPS Support area of [ups.com](http://ups.com) for the latest updated information about UPS Developer APIs.

## 1.6 UPS Developer API Technologies for WebServices

Web Services are powerful technologies that let business applications in different enterprises communicate directly with each other. For example, a software application program that processes orders for a mail order retailer can use Web Services to communicate with software applications at UPS that automatically schedule the shipment for new orders.

Web Services are governed by standards bodies which include, but are not limited to, W3C and OASIS. They are not limited to particular vendors and are available to any software application. Applications created for one environment (such as Microsoft Windows) can seamlessly communicate with applications in a different environment (such as Linux) without worrying about incompatibility of the different environments.

Web Services are supported by a wide variety of software development environments, so virtually all software developers can easily add Web Services features to their applications.

In effect, Web Services create a World Wide Web, but for computer applications instead of people. With Web Services, communications between enterprises happens rapidly, efficiently, and reliably.

Two technologies make up the core of Web Services—the Extensible Markup Language (XML) and the Simple Object Access Protocol (SOAP). A third technology, Web Services Definition Language (WSDL) uses XML and SOAP to define specific Web Services.

This section concludes by describing security and error reporting for Web Services.

### 1.6.1 Extensible Markup Language (XML)

The Extensible Markup Language (XML) is a standard governed by the World Wide Web Consortium, the governing body for web standards and guidelines. XML provides a way to identify the structure of content within a document. Figure 1 shows how a simple XML document could describe a book.

As the figure illustrates, XML distinguishes different parts of a document with labels known as tags. Tags in the example include <book>, <title>, <author>, <firstname>, etc. In this example the publisher for the book is John Wiley and Sons.



```
<?xml version="1.0" encoding="UTF-8" ?>
<book>
  <title>
    HTTP Essentials: Protocols for Secure, Scaleable Web Sites
  </title>
  <author>
    <firstname>
      Stephen
    </firstname>
    <lastname>
      Thomas
    </lastname>
  </author>
  <publisher>
    John Wiley and Sons
  </publisher>
  <year>
    2001
  </year>
  <isbn>
    0-471-398233
  </isbn>
</book>
```

**Figure 7: XML identifies the structure of documents, as in this document describing a book.**

A great deal of information on XML is available on the Internet. A good starting point is the World Wide Web Consortium's main page on XML at <http://www.w3.org/XML/>.

### 1.6.2 Simple Object Access Protocol (SOAP)

While XML defines the information that Web Services exchange, the Simple Object Access Protocol (SOAP) defines the methods that Web Services use to transfer those documents. The SOAP standard defines several different approaches for sending XML documents, but most Web Services (including those from UPS) rely on a single approach. That method uses the Hypertext Transfer Protocol (HTTP) to send a message from a Web Services client to a server. The server replies in the HTTP response. Figure 2 shows an example of a SOAP header portion of a web services message.

SOAP, like XML, is governed by the World Wide Web Consortium. More information can be found on the Internet at the W3C's XML Protocol Working Group's page, located at <http://www.w3.org/standards/xml/>

This security header block provides a mechanism for attaching security-related information targeted at a specific recipient in the form of a SOAP actor/role. UPSSecurity is a container element which provides the user access verification for the API Web Service.

```
<envr:Envelope xmlns:auth="http://www.ups.com/schema/xpci/1.0/auth"
xmlns:upss="http://www.ups.com/XMLSchema/XOLTWS/UPSS/v1.0"
xmlns:envr="http://schemas.xmlsoap.org/soap/envelope/"
xmlns:xsd="http://www.w3.org/2001/XMLSchema"
xmlns:common="http://www.ups.com/XMLSchema/XOLTWS/Common/v1.0"
xmlns:xsi="http://www.w3.org/2001/XMLSchema-instance"
xmlns:wsf="http://www.ups.com/schema/wsf">
  <envr:Header>
    <upss:UPSSecurity>
      <upss:UsernameToken>
        <upss:Username></upss:Username>
        <upss>Password></upss>Password>
      </upss:UsernameToken>
      <upss:ServiceAccessToken>
        <upss:AccessLicenseNumber></upss:AccessLicenseNumber>
      </upss:ServiceAccessToken>
    </upss:UPSSecurity>
  </envr:Header>
</env:Envelope>
```

**Figure 2: A sample of the UPSSecurity header portion of a web services message which structures its content as an XML document.**

### 1.6.3 Web Services Definition Language (WSDL)

XML and SOAP are general technologies used widely for many different purposes. The technology that ties them specifically to Web Services is the Web Services Definition Language (WSDL). Enterprises that make Web Services available to other enterprises describe those services using WSDL. In effect, WSDL acts a service contract: it defines exactly what services the enterprise offers and how clients should access those services.

WSDL documents are XML documents which conform to a specific structure. Figure 3 shows a sample WSDL document. The current version of the specification for WSDL (version 1.1) is available as a draft submitted to the World Wide Web Consortium. It can be found on their web site at <http://www.w3.org/TR/wsdl>.

Although WSDL documents, like all XML documents, are ultimately textual information, they are not primarily intended for humans to read. Instead, WSDL documents are designed to be read by software applications and application development tools. An application tool such as Microsoft's Visual Studio can import a WSDL document and automatically generate software classes that access the Web Services the WSDL defines. Developers then add these classes to their applications, giving the programs the ability to use Web Services.

Some WSDL documents are published in special directories such as the Universal Description, Discovery, and Integration (UDDI) registry on the Internet. UPS does not currently publish WSDL documents for UPS Developer APIs in such directories. Instead, UPS delivers the WSDL documents as part of the software development kit.

```

<?xml version="1.0" encoding="UTF-8" ?>
<wsdl:definitions name="Track" xmlns="http://schemas.xmlsoap.org/wsdl/"
  xmlns:wsdl="http://schemas.xmlsoap.org/wsdl/" xmlns:soap="http://schemas.xmlsoap.org/wsdl/soap/"
  xmlns:http="http://schemas.xmlsoap.org/wsdl/http/"
  xmlns:xsd="http://www.w3.org/2001/XMLSchema"
  xmlns:mime="http://schemas.xmlsoap.org/wsdl/mime/"
  xmlns:error="http://www.ups.com/schema/xpci/1.0/error"
  xmlns:common="http://www.ups.com/XMLSchema/XOLTWS/Common/v1.0"
  xmlns:trk="http://www.ups.com/XMLSchema/XOLTWS/Track/v1.0"
  xmlns:tns="http://www.ups.com/XMLSchema/XOLTWS/Track/v1.0/local"
  targetNamespace="http://www.ups.com/XMLSchema/XOLTWS/Track/v1.0/local">
  <xsd:import namespace="http://www.ups.com/XMLSchema/XOLTWS/Common/v1.0"
    schemaLocation="common.xsd" />
  <xsd:import namespace="http://www.ups.com/XMLSchema/XOLTWS/Error/v1.0"
    schemaLocation="error2.xsd" />
  <xsd:import namespace="http://www.ups.com/XMLSchema/XOLTWS/Track/v1.0"
    schemaLocation="track.xsd" />
  <wsdl:types />
  <wsdl:message name="TrackInput">
    <wsdl:part name="Body" element="trk:TrackRequest" />
  </wsdl:message>
  <wsdl:message name="TrackOutput">
    <wsdl:part name="Body" element="trk:TrackResponse" />
  </wsdl:message>
  <wsdl:message name="TrackError">
    <wsdl:part name="TrackError" element="error:Errors" />
  </wsdl:message>
  <wsdl:portType name="TrackPortType">
    <wsdl:operation name="Track">
      <wsdl:input name="TrackRequest" message="tns:TrackInput" />
      <wsdl:output name="TrackResponse" message="tns:TrackOutput" />
      <wsdl:fault name="TrackError" message="tns:TrackError" />
    </wsdl:operation>
  </wsdl:portType>
  <wsdl:binding name="TrackBinding" type="tns:TrackPortType">
    <soap:binding transport="http://schemas.xmlsoap.org/soap/http" />
    <wsdl:operation name="Track">
      <soap:operation soapAction="http://www.wwwie.ups.com/webservices/TrackBinding" style="document" />
    </wsdl:operation>
  </wsdl:binding>
  <wsdl:input name="TrackRequest">
    <soap:body parts="Body" use="literal" />
  </wsdl:input>
  <wsdl:output name="TrackResponse">
    <soap:body parts="Body" use="literal" />
  </wsdl:output>
  <wsdl:fault name="TrackError">
    <soap:fault name="TrackError" use="literal" />
  </wsdl:fault>
  </wsdl:operation>
</wsdl:binding>
<wsdl:service name="Track">
  <wsdl:port name="TrackPortTypePort" binding="tns:TrackBinding">
    <soap:address location="https://www.wwwie.ups.com/webservices/Track" />
  </wsdl:port>
</wsdl:service>

```

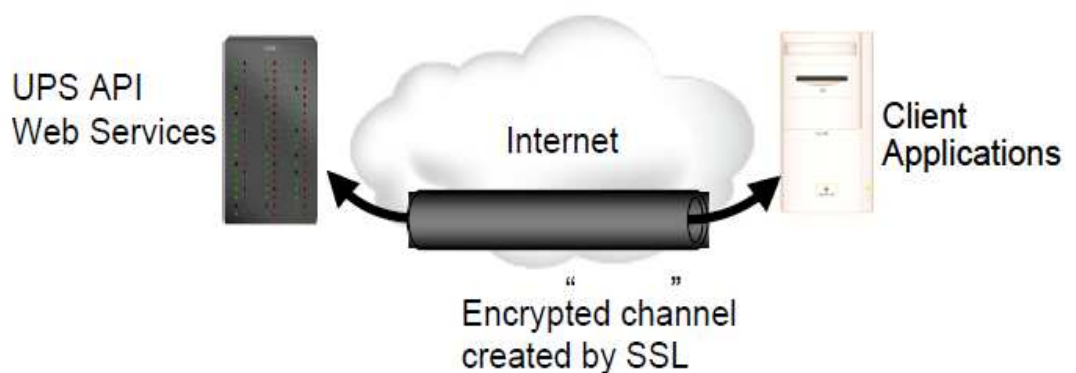
```
</wsdl:port>  
</wsdl:service>  
</wsdl:definitions>
```

**Figure 3: WSDL documents are specialized XML documents that define Web Services. Example ONLY.**

## 1.6.4 Securing Web Services

Organizations can offer Web Services using the public Internet, so Web Services standards provide many options for securing those services. Security options can ensure that only authorized parties are able to access Web Services, and they can protect confidential information that may be exchanged as part of Web Services communications. Because the breadth and depth of security options for Web Services are extensive, this subsection only describes security features relevant to UPS Developer APIs.

The most basic security services protect confidential information from eavesdropping by other devices on a network. To provide that protection, the UPS Developer APIs rely on the Secure Sockets Layer 3 (SSL3) protocol. When two systems communicate using SSL, the protocol creates a secure channel between them, and it encrypts all information that they exchange using this channel. The SSL protocol that UPS Developer APIs use is the same protocol used to secure millions of on-line purchases on the Web.



**Figure 4: SSL creates a secure channel across a network and protects confidential communications using that channel.**

In addition to protecting confidential information, the UPS Developer APIs also ensure that client applications are authorized to access UPS customer information. To gain that authorization, client applications must supply a username, password, and license key in all requests, as the example in Figure 5 shows. UPS corporate applications verify this information before returning sensitive information for the client applications.

```

<?xml version="1.0" encoding="UTF-8" ?>
<env:Envelope xmlns:env="http://schemas.xmlsoap.org/soap/envelope/"
  xmlns:xsd="http://www.w3.org/2001/XMLSchema" xmlns:xsi="http://www.w3.org/2001/XMLSchema-
  instance" xmlns:wsse="http://schemas.xmlsoap.org/ws/2002/04/secext"
  xmlns:upsa="http://www.ups.com/XMLschema/XOLTWS/upssa/v1.0"
  xmlns:common="http://www.ups.com/XMLschema/XOLTWS/Common/v1.0"
  xmlns:upss="http://www.ups.com/XMLschema/XOLTWS/UPSS/v1.0"
  xmlns:wsf="http://www.ups.com/schema/wsf">
  <env:Header>
    <upss:UPSSecurity>
      <upss:UsernameToken>
        <upss:Username></upss:Username>
        <upss:Password></upss:Password>
      </upss:UsernameToken>
      <upss:ServiceAccessToken>
        <upss:AccessLicenseNumber></upss:AccessLicenseNumber>
      </upss:ServiceAccessToken>
    </upss:UPSSecurity>
  </env:Header>
  <env:Body>
    <!-- the content of the message goes here -->
  </env:Body>
</env:Envelope><!-- the content of the message goes here -->
  <env:Body>
</env:Body>
</env:Envelope>

```

**Figure 5: UPS Web Service requests must include a Username, Password, and AccessLicense.**

Included in the WSDL files that document the specific Web Services are the appropriate messages that client applications can use to pass the security credentials as SOAP header elements. Development tools can import the WSDL document and automatically format the request messages appropriately.

#### **SSL Certificate Changes and Renewals:**

UPS has migrated from Unchained to Chained Digital Certificates to improve security for UPS servers. Chained Digital Certificates requires the use of SSL 3.0. Our migration from SSL 2.0 to 3.0 was completed between 6/15/2008 and 3/3/2009.

**Renewal of UPS.com SSL Certificates are coordinated by UPS Security Services every two years.** There is a concern that some UPS Developer Kit users who store UPS Certificates internally may have issues when SSL Certificates are renewed. It is recommended that UPS Developer Kit users not store UPS Certificates internally; however if a customer finds this necessary due to specific needs within their company, they may need to add renewed certificates to the their trust store.

There are a number of ways one can add a certificate to the application. One way to obtain the proper certificate is by placing a UPS Developer Kit URL, <https://onlinetools.ups.com/ups.app/xml/Rate>, for example, in a browser, connect to the URL, and double-click on the "lock" on the bottom right of the window (using Internet Explorer 7). After that the steps can be followed to install the certificate.

Also, in the event that the aforementioned solution does not work successfully for you we have been provided with the following certificate which should allow you to connect once it has been successfully added. You should be able to paste the following string into Notepad and save the file locally. Then, it will be necessary to have the client application reference the file so that it will know that this is the trusted certificate for making a connection to UPS.

This is the Verisign Class 3 Secure Server CA - G2 certificate that the client must trust:  
-----BEGIN CERTIFICATE-----

MIIGLDCCBZWgAwlBAGlQbk/6s8XmacTRZ8mSq+hYxDANBgkqhkiG9w0BAQUFADCB  
wTElMAkGA1UEBhMCVVMxZmFzAVBgNVBAoTDIzlcmI TaWduLCBJbmMuMTwwOgYDVQQL  
EzNDbGFzcyAzIFB1YmtpYyBQcmItYXJ5IENlcnRpZmljYXRpb24gQXV0aG9yaXR5  
IC0gRzlxOjA4BgNVBAsTMSHjKSAxOTk4IFZlcmI TaWduLCBJbmMuIC0gRm9yIGF1  
dGhvcml6ZWQgdXNlIG9ubHxkHxAdBgNVBAsTFiZlcmI TaWduIFRydXN0IE5ldHdv  
cmSwHhcNMDkwMzI1MDAwMDAwWhcNMTkwMzI0MjM1OTU5WjCBTELMAkGA1UEBh  
MC  
VVMxZmFzAVBgNVBAoTDIzlcmI TaWduLCBJbmMuMR8wHQYDVQQLExZWZXJpU2lnbiBU  
cnVzdCBOZXR3b3JrMTswOQYDVQQLExJUZlJlcyBvZiB1c2UgYXQgaHR0cHM6Ly93  
d3cudmVyaXNpZ24uY29tL3JwYSAoYykwOTEvMC0GA1UEAxMmVmVyaVNpZ24gQ2xh  
c3MgMyBTZW51cmUgU2VydmlvYiENBIC0gRzlwggEiMA0GCSqGSIb3DQEBAQUAA4IB  
DwAwggEKAoIBAQUdUv09XOzcopkBJ0pXVBXTatRlqtZxVy/iwDSMoJWzjOE3JPMu  
7UNFBY6J1/raSrX4Po1Ox/IJUEU3QJ90qqBRVWHxYISJpZ6AjS+wlapFgsTPtBR/  
RxUgKIKwaBLArlwH1/ZZzMTiVlxNSf8miKtUUTovStoOmOKJcrn892g8xB85essX  
gfMmRQ/cYWlB EAeEHikYcV5iy0PevjG6cQIZTiapUdqMZGkD3pz9ff17Ybz8hHyl  
XLTD+1fk0YS8f0AAZqLW+mjBS6PLlve8xt4+GaRCMBeztWwNsrUqHugffkwer/4  
3RIRKyC6/qfPoU6wZ/WAqiuDLtKOVImOHikLAGMBAAGjggKpMIIcPtA0BggrBgEF  
BQcBAQQoMCYwJAYIKwYBBQUHMAAGGGGh0dHA6Ly9vY3NwLnZlcmIzaWduLmNvbTAS  
BgNVHRMBAf8ECDAGAQH/AgEAMHAGA1UdIARpMGcwZQYLYIZIAYb4RQEHFwMwVjAo  
BggrBgEFBQcCARYcaHR0cHM6Ly93d3cudmVyaXNpZ24uY29tL2NwczAqBggrBgEF  
BQcCAjAeGhxodHRwczovL3d3dy52ZXJpc2lnbi5jb20vcnBhMDQGA1UdHwQtMCSw  
KaAnoCWGI2h0dHA6Ly9jcmwudmVyaXNpZ24uY29tL3BjYTMtZzluY3JsMA4GA1Ud  
DwEB/wQEAWIBBjBtBggrBgEFBQcBDARhMF+hXaBbMFkwVzBVFglpbWFnZS9naWYw  
ITAfMAcGBSsOAwlaBBSPP5dMahqyNjmvDz4Bq1EgYLHsZLjAlFiNodHRwOi8vbG9n  
by52ZXJpc2lnbi5jb20vdmNsb2dvLmdpZjApBgNVHREEljAgpB4wHDEaMBGGA1UE  
AxMRQ2xhc3MzQ0EyMDQ4LTETlWwHQYDVRO0BBYEFKXvCxHwEEDo0plkEiyHOBX  
LX1HMIHnBgNVHSMEdg8wgdyhgcckgcQwgcExCzAJBgNVBAYTAIVTMRcwFQYDVQQK  
Ew5WZXJpU2lnbiwgSW5jLjE8MDoGA1UECXMzQ2xhc3MgMyBQdWJsaWMgUHJpbWVy  
eSBDZXJ0aWZpY2F0aW9uIEF1dGhvcml0eSAtIEcyMTowOAYDVQQLExEoYykgMTk5  
OCBWXZJpU2lnbiwgSW5jLiAtIEZvciBhdXRob3JpemVkIHVzZSBvbmx5MR8wHQYD



VQQLExZWZXJpU2InbiBUcnVzdCBOZXR3b3JrghB92f4Hz6getxB5Z/uniTTGMA0G  
CSqGSib3DQEBBQUAA4GBAGN0Lz1Tqi+X7CYRZhr+8d5BJxnSf9jBHPniOFY6H5Cu  
OcUgdav4bC1nHynCldcUiGNLsJsnY5H48KMBJLb7j+M9AgtvVP7UzNvWhb98IR5e  
YhHB2QmcQrmy1KotmDojYMyimvFu6M+O0Ro8XhnF15s1sAIjJOUFuNWI4+D6ufRf  
-----END CERTIFICATE-----

Finally, for more information on installing the latest VeriSign CA Root Certificate, please click on the links below:

[https://knowledge.verisign.com/support/ssl-certificates-support/index?page=content&id=SO7154&actp=search&viewlocale=en\\_US&searchid=1308235124970](https://knowledge.verisign.com/support/ssl-certificates-support/index?page=content&id=SO7154&actp=search&viewlocale=en_US&searchid=1308235124970)  
<https://knowledge.verisign.com/support/ssl-certificates-support/index?page=content&actp=CROSSLINK&id=AR1553>  
<https://knowledge.verisign.com/support/ssl-certificates-support/index?page=content&id=SO4785&actp=LIST>

## 1.6.5 Indicating Errors in Client Application Requests

When an error occurs in a client application's request, UPS Developer APIs report that error using the standard SOAP message format. That message format defines a specific message type, known as a *fault*, for error reporting. The essential components of a fault message are the faultcode, faultstring, faultactor, and detail.

The faultcode element can contain one of four values to indicate the type of error that the UPS Developer APIs encountered.

- **VersionMismatch:** The SOAP message that the client application sent used a version of the SOAP protocol that the UPS Developer APIs could not understand.
- **MustUnderstand:** The SOAP message that the client application sent included an element in the header that the UPS Developer APIs could not understand.
- **Client:** The request that the client application sent was not valid.
- **Server:** Although the client application's request did not have any errors itself, the UPS Developer APIs encountered an error when trying to process it.

The faultstring element contains a textual description of the error.

The faultactor element can indicate which system detected or generated the error. If present, it contains a Uniform Resource Identifier (URI) for that system.

The detail element contains more information about the error. It includes a specific error code and a textual description for that code.

**Note: UPS encourages application developers to display the description of any unexpected errors or warnings to the user. This**

**information can be invaluable when diagnosing problems, and will normally be required by UPS Technical Support.**

**It will be extremely helpful if the developer implements and maintains logs of all transactions and activity, including errors or warnings.**

## 1.7 Understanding Freight Web Services

With its Freight Web Services, UPS combines a range of freight delivery services with the flexibility and convenience of the Internet. With these services, you can develop custom applications to determine rates available for freight shipments, process freight shipments, and schedule UPS to automatically pick up your shipment.

### 1.7.1 Processing Freight Shipments

UPS offers the Freight Ship Web Service for client applications to process Air or Ground freight shipments. Applications use this service to request a freight shipment. They provide details about the shipment such as its origin, destination, and contents as well as the specific UPS service or services desired. UPS accepts the shipment and returns rate information to the client application.

### 1.7.2 Scheduling Freight Pickups

The Freight Pickup Web Service lets client schedule the pickup of a ground freight shipment. With this service, client applications may schedule a group freight pickup for a previously processed ground freight shipment, and they may schedule pickups for entirely new shipments. For details regarding this Web Service please refer to the Pickup Developer's Guide.

#### 1.7.2.1 PRO Numbers

UPS uses PRO numbers to identify and trace every freight shipment as it moves through the UPS system. (UPS makes every effort to ensure that a PRO number uniquely identifies a freight shipment for up to 3 years.)

Destination postal code: A zip code (U.S.) or postal code (international).

Destination country: The destination country code.

(Note: Reference numbers are available up to 6 months after delivery. BOL Id and Purchase Order number are the only two reference number types that can be tracked for freight. Refer the Appendix for Reference Number Codes.)



## **1.8 The Freight Ship WebServices Reference**

This section documents the details of the freight ship web service messages, including the requests that clients send to UPS and the responses that UPS returns.

## 1.8.1 Freight Ship Web Services Schema

Name	XPath	Required	Max Allowed	Type	Length	Description	Validation Rules
FreightShipRequest	/FreightShipRequest	Yes	One	Container	N/A	N/A	
Request	/FreightShipRequest/Request	Yes	One	Container	N/A	Freight Ship Request Container.	
RequestOption	/FreightShipRequest/Request/RequestOption	Yes	Many	String	1	Type of Shipping desired	Valid Values are: 1 - Ground Freight Shipping 2 - Air Freight Shipping
TransactionReference	/FreightShipRequest/Request/TransactionReference	No	One	Container	N/A	TransactionReference identifies transactions between client and server.	
CustomerContext	/FreightShipRequest/Request/TransactionReference/CustomerContext	No	One	String	1..512	The client uses CustomerContext to synchronize request/response pairs. The client establishes CustomerContext, which can contain any information you want, as long as it is valid XML; it is echoed back by the server.	
TransactionIdentifier	/FreightShipRequest/Request/TransactionReference/TransactionIdentifier	No	One	String	0	The Unique TransactionIdentifier for a given transaction.	Empty Tag.

Name	XPath	Required	Max Allowed	Type	Length	Description	Validation Rules
Shipment	/FreightShipRequest/Shipment	Yes	One	Container	N/A	Shipment Container.	
AccountType	/FreightShipRequest/Shipment/AccountType	No	One	Container	N/A	Container for type of Account	Air freight only.
Code	/FreightShipRequest/Shipment/AccountType/Code	Yes*	One	String	10	HOUSE or OCASIONAL	Air freight only. Default is OCCASIONAL.
Description	/FreightShipRequest/Shipment/AccountType/Description	No	One	String	35	Description for Type of account	Air freight only.
ShipFrom	/FreightShipRequest/Shipment/ShipFrom	Yes	One	Container	N/A	ShipFrom Container.	
Name	/FreightShipRequest/Shipment/ShipFrom/Name	Yes	One	String	35	The ship from location's name or company name.	
TaxIdentificationNumber	/FreightShipRequest/Shipment/ShipFrom/TaxIdentificationNumber	Cond	One	String	1..15	Company's Tax Identification Number at the pick up location	Required if SED form (International forms) is requested

Name	XPath	Required	Max Allowed	Type	Length	Description	Validation Rules
TariffPoint	/FreightShipRequest/Shipment/ShipFrom/TariffPoint	No	One	String	3	Alternate manner for specifying the ShipFrom Label data AND to suppress an unknown location error message	Air freight only. Must be a valid Tariff Point
Address	/FreightShipRequest/Shipment/ShipFrom/Address	Yes	One	Container	N/A	Address Container.	
AddressLine	/FreightShipRequest/Shipment/ShipFrom/Address/AddressLine	Yes	One	String	35	The Ship from street address.	Max Occurrence must be 3
City	/FreightShipRequest/Shipment/ShipFrom/Address/City	Yes	One	String	30	The Ship from city.	
StateProvinceCode	/FreightShipRequest/Shipment/ShipFrom/Address/StateProvinceCode	Cond	One	String	5	The Ship from location's state or province code.	Required for certain countries.
Town	/FreightShipRequest/Shipment/ShipFrom/Address/Town	No	One	String	30	The ship from location's town code.	
PostalCode	/FreightShipRequest/Shipment/ShipFrom/Address/PostalCode	Cond	One	String	10	The ship from location's postal code.	Required if the country code is US or CA

Name	XPath	Required	Max Allowed	Type	Length	Description	Validation Rules
CountryCode	/FreightShipRequest/Shipment/ShipFrom/Address/CountryCode	Yes	One	String	2	The ship from location's country code.	
AttentionName	/FreightShipRequest/Shipment/ShipFrom/AttentionName	No	One	String	35	Contact name at the ship from location.	CO International forms are requested.
Phone	/FreightShipRequest/Shipment/ShipFrom/Phone	Yes	One	Container	N/A	Phone Container	
Number	/FreightShipRequest/Shipment/ShipFrom/Phone/Number	Yes	One	String	15	The ship from location's phone number.	
Extension	/FreightShipRequest/Shipment/ShipFrom/Phone/Extension	No	One	String	4	The ship from location's phone extension.	
FaxNumber	/FreightShipRequest/Shipment/ShipFrom/FaxNumber	No	One	String	15	The ship from location's Fax Number.	
EEmailAddress	/FreightShipRequest/Shipment/ShipFrom/EEmailAddress	No	One	String	50	Ship from email address.	

Name	XPath	Required	Max Allowed	Type	Length	Description	Validation Rules
ShipperNumber	/FreightShipRequest/Shipment/ShipperNumber	Yes	One	String	10	Shipper's six digit account number.	Size must be six alphanumeric characters. Must be associated with the User Id specified in the Access Request XML
ShipTo	/FreightShipRequest/Shipment/ShipTo	Yes	One	Container	N/A	ShipTo Container.	
Name	/FreightShipRequest/Shipment/ShipTo/Name	Yes	One	String	35	Consignee's company name.	
TaxIdentificationNumber	/FreightShipRequest/Shipment/ShipTo/TaxIdentificationNumber	No	One	String	15	Company's Tax Identification Number of the Consignee	
Address	/FreightShipRequest/Shipment/ShipTo/Address	Yes	One	Container	N/A	Address Container.	
AddressLine	/FreightShipRequest/Shipment/ShipTo/Address/AddressLine	Yes	Three	String	35	Consignee's street address.	Max Occurrence must be 3
City	/FreightShipRequest/Shipment/ShipTo/Address/City	Yes	One	String	30	Consignee's city.	

Name	XPath	Required	Max Allowed	Type	Length	Description	Validation Rules
StateProvinceCode	/FreightShipRequest/Shipment/ShipTo/Address/StateProvinceCode	Cond	One	String	5	Consignee's state or province code.	Required for certain countries.
Town	/FreightShipRequest/Shipment/ShipTo/Address/Town	No	One	String	30	Consignee's town code.	
PostalCode	/FreightShipRequest/Shipment/ShipTo/Address/PostalCode	Cond	One	String	10	Consignee's postal code.	Required if the country code is US or CA
CountryCode	/FreightShipRequest/Shipment/ShipTo/Address/CountryCode	Yes	One	String	2	Consignee's country code.	
TariffPoint	/FreightShipRequest/Shipment/ShipTo/TariffPoint	No	One	String	3	Alternate manner for specifying the ShipFrom Label data AND to suppress an unknown location error message	Air freight only. Must be a valid Tariff Point
AttentionName	/FreightShipRequest/Shipment/ShipTo/AttentionName	Cond	One	String	35	Contact name at the consignee's location.	Required for Air Freight Shipment with Pickup. Required if Invoice International form is requested
Phone	/FreightShipRequest/Shipment/ShipTo/Phone	Cond	One	Container	N/A	Phone Container.	Required if HoldAtAirport service option is requested.

Name	XPath	Required	Max Allowed	Type	Length	Description	Validation Rules
Number	/FreightShipRequest/Shipment/ShipTo/Phone/Number	Yes*	One	String	15	Consignee's phone number.	
Extension	/FreightShipRequest/Shipment/ShipTo/Phone/Extension	No	One	String	4	Consignee's phone extension.	
FaxNumber	/FreightShipRequest/Shipment/ShipTo/FaxNumber	No	One	String	15	Consignee's fax number.	
EMailAddress	/FreightShipRequest/Shipment/ShipTo/EMailAddress	No	One	String	50	Ship To email address.	
PaymentInformation	/FreightShipRequest/Shipment/PaymentInformation	Yes	One	Container	N/A	Payment Information Container.	
Payer	/FreightShipRequest/Shipment/PaymentInformation/Payer	Yes	One	Container	N/A	Payer Container.	
Name	/FreightShipRequest/Shipment/PaymentInformation/Payer/Name	Yes	One	String	35	Payer's company name	



Name	XPath	Required	Max Allowed	Type	Length	Description	Validation Rules
Address	/FreightShipRequest/Shipment/PaymentInformation/Payer/Address	Yes	One	Container	N/A	Address Container.	
AddressLine	/FreightShipRequest/Shipment/PaymentInformation/Payer/Address/AddressLine	Yes	One	String	35	Payer's street address.	Max Occurrence must be 3
City	/FreightShipRequest/Shipment/PaymentInformation/Payer/Address/City	Yes	One	String	30	Payer's city.	
StateProvinceCode	/FreightShipRequest/Shipment/PaymentInformation/Payer/Address/StateProvinceCode	Cond	One	String	5	Payer's state or province code.	Required for certain countries.
Town	/FreightShipRequest/Shipment/PaymentInformation/Payer/Address/Town	No	One	String	30	Payer's town code.	
PostalCode	/FreightShipRequest/Shipment/PaymentInformation/Payer/Address/PostalCode	Cond	One	String	10	Payer's postal code.	Required if the country code is US or CA
CountryCode	/FreightShipRequest/Shipment/PaymentInformation/Payer/Address/CountryCode	Yes	One	String	2	Payer's country code.	

Name	XPath	Required	Max Allowed	Type	Length	Description	Validation Rules
ShipperNumber	/FreightShipRequest/Shipment/PaymentInformation/Payer/ShipperNumber	No	One	String	10	Payer's account number	Must be the users 6 digit UPS account number or 9 digit SCS account number. Required for Air shipments.
AttentionName	/FreightShipRequest/Shipment/PaymentInformation/Payer/AttentionName	No	One	String	35	Contact name at the payer's location.	
Phone	/FreightShipRequest/Shipment/PaymentInformation/Payer/Phone	No	One	Container	N/A	Phone Container.	
Number	/FreightShipRequest/Shipment/PaymentInformation/Payer/Phone/Number	Yes	One	String	15	Payer's phone number.	
Extension	/FreightShipRequest/Shipment/PaymentInformation/Payer/Phone/Extension	No	One	String	4	Payer's phone extension.	
FaxNumber	/FreightShipRequest/Shipment/PaymentInformation/Payer/FaxNumber	No	One	String	15	Payer's fax number.	
EEmailAddress	/FreightShipRequest/Shipment/PaymentInformation/Payer/EEmailAddress	No	One	String	50	Payer's email address.	

Name	XPath	Required	Max Allowed	Type	Length	Description	Validation Rules
ShipmentBillingOption	/FreightShipRequest/Shipment/PaymentInformation/ShipmentBillingOption	Yes	One	Container	N/A	ShipmentBillingOption Container.	
Code	/FreightShipRequest/Shipment/PaymentInformation/ShipmentBillingOption/Code	Yes	One	String	2	Billing Option Code.	See Appendix for a list of valid values.
Description	/FreightShipRequest/Shipment/PaymentInformation/ShipmentBillingOption/Description	No	One	String	35	Billing Option Description.	
ManufactureInformation	/FreightShipRequest/Shipment/ManufactureInformation	Cond	One to Many (up to 5)	Container	N/A	For Air Freight Canada shipments. Up to five countries of manufacture can be provided. Note: - If more than five countries are provided only the first five countries are considered.	Air freight only. Only Canada shipments
CountryCode	/FreightShipRequest/Shipment/ManufactureInformation/CountryCode	Yes*	One	String	2	Manufacture Country Code	Air freight only. Only Canada shipments
Service	/FreightShipRequest/Shipment/Service	Yes	One	Container	N/A	Service Container.	

Name	XPath	Required	Max Allowed	Type	Length	Description	Validation Rules
Code	/FreightShipRequest/Shipment/Service/Code	Yes	One	String	3	The code for the UPS Service associated with the shipment.	See Appendix for a list of Valid Values.
Description	/FreightShipRequest/Shipment/Service/Description	No	One	String	35	A text description of the UPS Service associated with the shipment.	
HandlingUnitOne	/FreightShipRequest/Shipment/HandlingUnitOne	Cond	One	Container	N/A	HandlingUnit Container.	Ground freight only. Required for Ground Shipments.
Quantity	/FreightShipRequest/Shipment/HandlingUnitOne/Quantity	Yes*	One	String	8	Quantity of the handling unit.	Ground freight only.
Type	/FreightShipRequest/Shipment/HandlingUnitOne/Type	Yes*	One	Container	N/A	HandlingUnit Type Container.	Ground freight only.
Code	/FreightShipRequest/Shipment/HandlingUnitOne/Type/Code	Yes	One	String	3	The code associated with handling unit type.	Ground freight only. See Appendix for a list of Valid Values
Description	/FreightShipRequest/Shipment/HandlingUnitOne/Type/Description	No	One	String	35	A text description of the code for the handling unit type.	Ground freight only.

Name	XPath	Required	Max Allowed	Type	Length	Description	Validation Rules
HandlingUnitTwo	/FreightShipRequest/Shipment/HandlingUnitTwo	No	One	Container	N/A	HandlingUnit Container.	Ground freight only.
Quantity	/FreightShipRequest/Shipment/HandlingUnitTwo/Quantity	Yes*	One	String	8	Quantity of the handling unit.	Ground freight only.
Type	/FreightShipRequest/Shipment/HandlingUnitTwo/Type	Yes*	One	Container	N/A	HandlingUnit Type Container.	Ground freight only.
Code	/FreightShipRequest/Shipment/HandlingUnitTwo/Type/Code	Yes*	One	String	3	The code associated with handling unit type.	Ground freight only. See Appendix for a list of Valid Values
Description	/FreightShipRequest/Shipment/HandlingUnitTwo/Type/Description	No	One	String	35	A text description of the code for the handling unit type.	Ground freight only.
ExistingShipmentID	/FreightShipRequest/Shipment/ExistingShipmentID	No	One	Container	N/A	ExistingShipmentID Container.	Applicable for both Ground and Air Freight Shipment. Required only for Shipment Updates.
ShipmentNumber	/FreightShipRequest/Shipment/ExistingShipmentID/ShipmentNumber	Yes*	One	String	9	The Shipment Tracking Number or PRO Number assigned to the shipment.	

Name	XPath	Required	Max Allowed	Type	Length	Description	Validation Rules
BOLID	/FreightShipRequest/Shipment/ExistingShipmentID/BOLID	Cond	One	String	35	The retrieval key for the stored BOL. Deprecated. Retained for backward compatibility- ConfirmationNumber should be used.	Ground freight only.
ConfirmationNumber	/FreightShipRequest/Shipment/ExistingShipmentID/ConfirmationNumber	Cond	One	Container	N/A	Container for the existing shipment pickup confirmation number.	Applicable for both Ground and Air Freight Shipment. Required only for Shipment Updates.
Type	/FreightShipRequest/Shipment/ExistingShipmentID/ConfirmationNumber/Type	Yes*	One	Container	N/A	Container for the type of unique pickup confirmation number.	Applicable for both Ground and Air Freight Shipment. Required only for Shipment Updates.
Code	/FreightShipRequest/Shipment/ExistingShipmentID/ConfirmationNumber/Type/Code	Yes*	One	String	5	01 = BOLID or 02 = PRQ	Applicable for both Ground and Air Freight Shipment. Required only for Shipment Updates. Note: - 01 is valid for Ground shipments. 02 is valid for Air shipments.
Description	/FreightShipRequest/Shipment/ExistingShipmentID/ConfirmationNumber/Type/Description	No	One	String	35	Description of the type of pickup confirmation number or BOLID.	Applicable for both Ground and Air Freight Shipment. Required only for Shipment Updates.
Value	/FreightShipRequest/Shipment/ExistingShipmentID/ConfirmationNumber/Value	Yes*	One	String	35	The unique pickup confirmation number or BOLID value.	Applicable for both Ground and Air Freight Shipment. Required only for Shipment Updates.

Name	XPath	Required	Max Allowed	Type	Length	Description	Validation Rules
CreationDate	/FreightShipRequest/Shipment/ExistingShipmentID/CreationDate	Cond	One	String	8	YYYYMMDD	Required for Air Freight Shipment updates.
HandlingInstructions	/FreightShipRequest/Shipment/HandlingInstructions	No	One	String	500	General purpose instructions to the driver. E.g., :Call 30 minutes before-	Ground freight only.
DeliveryInstructions	/FreightShipRequest/Shipment/DeliveryInstructions	No	One	String	500	Delivery Instructions.	Ground freight only.
PickupInstructions	/FreightShipRequest/Shipment/PickupInstructions	No	One	String	500	Pickup Instructions.	Ground freight only.
SpecialInstructions	/FreightShipRequest/Shipment/SpecialInstructions	No	One	String	150	Special Instructions.	Air freight only.
ShipmentTotalWeight	/FreightShipRequest/Shipment/ShipmentTotalWeight	No	One	Container	N/A	Total weight for the shipment.  NOTE: If this container is present with a element values, individual commodity weights are NOT applicable.	Air freight only.  NOTE: Shipment Total Weight will take precedence over Commodity weight.

Name	XPath	Required	Max Allowed	Type	Length	Description	Validation Rules
Value	/FreightShipRequest/Shipment/ShipmentTotalWeight/Value	Yes*	One	String	16.2	Total weight for the shipment.	Air freight only. Valid characters are 0-9 and. (Decimal point). Limit to 2 digits after the decimal. The maximum length of the field is 11 excluding. and including the 2 decimal places. (#####.##, #####.#, #####)
UnitOfMeasurement	/FreightShipRequest/Shipment/ShipmentTotalWeight/UnitOfMeasurement	Yes*	One	Container	N/A	Shipment Total weight Unit of Measurement Container	Air freight only.
Code	/FreightShipRequest/Shipment/ShipmentTotalWeight/UnitOfMeasurement/Code	Yes*	One	String	2	The code associated with the unit of measure for the Shipment Total Weight.	Air freight only. Valid values are LBS - Pounds KGS - Kilograms (Currently only valid for Air movements)
Description	/FreightShipRequest/Shipment/ShipmentTotalWeight/UnitOfMeasurement/Description	No	One	String	35	A text description of the code for the unit of measure associated with the Shipment Total Weight.	Air freight only.
Commodity	/FreightShipRequest/Shipment/Commodity	Yes	Many	Container	N/A	Commodity Container.	
CommodityID	/FreightShipRequest/Shipment/Commodity/CommodityID	No	One	String	35	Unique identifier for the commodity.	



Name	XPath	Required	Max Allowed	Type	Length	Description	Validation Rules
Description	/FreightShipRequest/Shipment/Commodity/Description	Yes	One	String	755	Description of the line item.	
Weight	/FreightShipRequest/Shipment/Commodity/Weight	Yes	One	Container	N/A	CommodityWeight Container.	
UnitOfMeasurement	/FreightShipRequest/Shipment/Commodity/Weight/UnitOfMeasurement	Yes	One	Container	N/A	CommodityWeight UnitOfMeasurement Container.	
Code	/FreightShipRequest/Shipment/Commodity/Weight/UnitOfMeasurement/Code	Yes	One	String	3	The code associated with the unit of measure for the line item.	Valid values are LBS - Pounds; KGS - Kilograms (Currently only valid for Air movements)
Description	/FreightShipRequest/Shipment/Commodity/Weight/UnitOfMeasurement/Description	No	One	String	35	A text description of the code for the unit of measure associated with the line item.	

Name	XPath	Required	Max Allowed	Type	Length	Description	Validation Rules
Value	/FreightShipRequest/Shipment/Commodity/Weight/Value	Cond	One	String	16.2 for Ground 6.2 for Air	The value for the line item weight associated with the shipment.	Ground: Valid characters are 0-9 and. (Decimal point). Limit to 2 digits after the decimal. The maximum length of the field is 16 excluding. and including the 2 decimal places.(#####.##,#####.##,#####.##) Air: Valid characters are 0-9 and. (Decimal point). Limit to 2 digit after the decimal. The maximum length of the field is 8 excluding. and including the 2 decimal places.(#####.##,#####.##,#####)
Dimensions	/FreightShipRequest/Shipment/Commodity/Dimensions	Cond	One	Container	N/A	Dimensions Container.	Air freight only. Required for air freight services.
UnitOfMeasurement	/FreightShipRequest/Shipment/Commodity/Dimensions/UnitOfMeasurement	Yes*	One	Container	N/A	UnitOfMeasurement Container.	Air freight only.
Code	/FreightShipRequest/Shipment/Commodity/Dimensions/UnitOfMeasurement/Code	Yes	One	String	3	The code associated with the unit of measure for the line item dimension.	Air freight only. Valid values are IN - Inches CM - Centimeters

Name	XPath	Required	Max Allowed	Type	Length	Description	Validation Rules
Description	/FreightShipRequest/Shipment/Commodity/Dimensions/UnitOfMeasurement/Description	No	One	String	35	A text description of the code for the unit of measure associated with the line item dimension.	Air freight only.
Length	/FreightShipRequest/Shipment/Commodity/Dimensions/Length	Yes*	One	String	16.2 for Ground 3.1 for Air	The length of the line item used to determine dimensional weight.	Ground: Valid characters are 0-9 and. (Decimal point). Limit to 2 digits after the decimal. The maximum length of the field is 16 excluding. and including the 2 decimal places.(#####.##,#####.##,#####) Air: Valid characters are 0-9 and. (Decimal point). Limit to 1 digit after the decimal. The maximum length of the field is 4 excluding. and including the 1 decimal places.(###.##,###)
Width	/FreightShipRequest/Shipment/Commodity/Dimensions/Width	Yes*	One	String	16.2 for Ground 3.1 for Air	The width of the line item used to determine dimensional weight.	Ground: Valid characters are 0-9 and. (Decimal point). Limit to 2 digits after the decimal. The maximum length of the field is 16 excluding. and including the 2 decimal places.(#####.##,#####.##,#####) Air: Valid characters are 0-9 and. (Decimal point). Limit to 1 digit after the decimal. The maximum length of the field is 4 excluding. and including the 1 decimal places.(###.##,###)

Name	XPath	Required	Max Allowed	Type	Length	Description	Validation Rules
Height	/FreightShipRequest/Shipment/Commodity/Dimensions/Height	Yes*	One	String	16.2 for Ground 3.1 for Air	The height of the line item used to determine dimensional weight.	Ground: Valid characters are 0-9 and. (Decimal point). Limit to 2 digits after the decimal. The maximum length of the field is 16 excluding. and including the 2 decimal places.(#####.##,#####.##,#####) Air: Valid characters are 0-9 and. (Decimal point). Limit to 1 digit after the decimal. The maximum length of the field is 4 excluding. and including the 1 decimal places.(##.#,###)
NumberOfPieces	/FreightShipRequest/Shipment/Commodity/NumberOfPieces	Yes	One	String	6	Number of piece of the commodity in the handling unit.	
PackagingType	/FreightShipRequest/Shipment/Commodity/PackagingType	Yes	One	Container	N/A	PackagingType Container.	
Code	/FreightShipRequest/Shipment/Commodity/PackagingType/Code	Yes	One	String	3	The code for the UPS packaging type associated with the shipment.	See Appendix for the list of possible packaging type.

Name	XPath	Required	Max Allowed	Type	Length	Description	Validation Rules
Description	/FreightShipRequest/Shipment/Commodity/PackagingType/Description	No	One	String	35	A text description of the code for the UPS packaging type associated with the shipment.	
DangerousGoodsIndicator	/FreightShipRequest/Shipment/Commodity/DangerousGoodsIndicator	Cond	One	String	0	The presence of the tag DangerousGoodsIndicator indicates that the commodity is of type dangerous goods.	Ground freight only. Required for at least one commodity when the dangerous goods accessorial is passed.
CommodityValue	/FreightShipRequest/Shipment/Commodity/CommodityValue	No	One	Container	N/A	CommodityValue Container.	
CurrencyCode	/FreightShipRequest/Shipment/Commodity/CommodityValue/CurrencyCode	Cond*	One	String	3	Commodity value currency code type.	Required when value of commodity is entered. Valid Values are: USD - United States Dollar
MonetaryValue	/FreightShipRequest/Shipment/Commodity/CommodityValue/MonetaryValue	Yes*	One	String	16.2	Commodity value amount.	Valid characters are 0-9 and. (Decimal point). Limit to 2 digits after the decimal. The maximum length of the field is 16 excluding, and including the 2 decimal places.(#####.##,#####.##,#####)
FreightClass	/FreightShipRequest/Shipment/Commodity/FreightClass	Yes	One	String	10	Freight Classification.	Ground freight only. See Appendix for the list of possible freight class. Required for Ground Shipment

Name	XPath	Required	Max Allowed	Type	Length	Description	Validation Rules
NMFCCommodityCode	/FreightShipRequest/Shipment/Commodity/NMFCCommodityCode	No	One	String	0..8	National Motor Freight Classification commodity code	Ground freight only. The first 6 digits represent the Prime Code and the remaining 2 digits represent the Sub Prime Code.
NMFCCommodity	/FreightShipRequest/Shipment/Commodity/NMFCCommodity	No	One	Container	N/A	Container for National Motor Freight Classification Commodity. This Container is for customers who choose to send the NMFC Prime and sub code as two different fields.	Ground freight only. This container is mutually exclusive with NMFCCommodityCode element above.
PrimeCode	/FreightShipRequest/Shipment/Commodity/NMFCCommodity/PrimeCode	Cond	One	String	3..6	National Motor Freight Classification Commodity prime code.	Ground freight only. Must be 6 digits representing the NMFC prime code. This field is required if NMFCCommodity/SubCode is supplied.
SubCode	/FreightShipRequest/Shipment/Commodity/NMFCCommodity/SubCode	No	One	String	0..2	National Motor Freight Classification Commodity sub code.	Ground freight only. Must be 2 digits representing the NMFC sub code. If this field is supplied, NMFCCommodity/PrimeCode also has to be supplied
Reference	/FreightShipRequest/Shipment/Reference	No	Hundred	Container	N/A	Reference Container.	Max number of references allowed: 200
Number	/FreightShipRequest/Shipment/Reference/Number	Yes*	One	Container	N/A	Reference Number Container.	

Name	XPath	Required	Max Allowed	Type	Length	Description	Validation Rules
Code	/FreightShipRequest/Shipment/Reference/Number/Code	Yes	One	String	5	Reference number type code for the entire shipment.	See Appendix for the list of possible reference number type codes.
Value	/FreightShipRequest/Shipment/Reference/Number/Value	Yes	One	String	35	Customer supplied reference number.	
BarCodeIndicator	/FreightShipRequest/Shipment/Reference/BarCodeIndicator	No	One	String	0	The presence of the tag BarCodeIndicator indicates that the reference at index 1 is bar-coded.	Empty Tag.
NumberOfCartons	/FreightShipRequest/Shipment/Reference/NumberOfCartons	No	One	String	6	Number of cartons attached to this reference.	Ground freight only. Strongly recommended for ground services. Ignored for air services.
Weight	/FreightShipRequest/Shipment/Reference/Weight	No	One	Container	N/A	Reference Weight Container.	Ground freight only. Strongly recommended for ground services. Ignored for air services.
UnitOfMeasurement	/FreightShipRequest/Shipment/Reference/Weight/UnitOfMeasurement	Yes*	One	Container	N/A	Reference Weight UnitOfMeasurement Container.	Ground freight only.
Code	/FreightShipRequest/Shipment/Reference/Weight/UnitOfMeasurement/Code	Yes	One	String	3	The code associated with the unit of measure for the total weight for this reference.	Ground freight only. Valid values are LBS - Pounds

Name	XPath	Required	Max Allowed	Type	Length	Description	Validation Rules
Description	/FreightShipRequest/Shipment/Reference/Weight/UnitOfMeasurement/Description	No	One	String	35	The description for the total weight associated with this reference.	Ground freight only.
Value	/FreightShipRequest/Shipment/Reference/Weight/Value	Yes*	One	String	16.2	The value for the total weight associated with this reference.	Ground freight only. Valid characters are 0-9 and. (Decimal point). Limit to 2 digits after the decimal. The maximum length of the field is 16 excluding. and including the 2 decimal places.(#####.##,#####.##,#####)
ShipmentServiceOptions	/FreightShipRequest/Shipment/ShipmentServiceOptions	No	One	Container	N/A	ShipmentServiceOptions Container.	
EMailInformation	/FreightShipRequest/Shipment/ShipmentServiceOptions/EMailInformation	No	Many	Container	N/A	EmailInformation Container.	Multiple Email Information Containers with the same EMail Type Code is not allowed.
EMailType	/FreightShipRequest/Shipment/ShipmentServiceOptions/EMailInformation/EMailType	Yes*	One	Container	N/A	EmailType Container.	



Name	XPath	Required	Max Allowed	Type	Length	Description	Validation Rules
Code	/FreightShipRequest/Shipment/ShipmentServiceOptions/EmailInformation/EmailType/Code	Yes	One	String	3	The code associated with the email type for the shipment service options.	Valid values are: 001- Ship Notification 002- Delivery Notification 003 - Exception Notification 004 - BOL/Labels(Ground Only) 005 - AWB(Air Only)
Description	/FreightShipRequest/Shipment/ShipmentServiceOptions/EmailInformation/EmailType/Description	No	One	String	35	A text description of the code for the email type associated with the shipment service options.	
Email	/FreightShipRequest/Shipment/ShipmentServiceOptions/EmailInformation/Email	Yes	One	Container	N/A	Email Container.	
EmailAddress	/FreightShipRequest/Shipment/ShipmentServiceOptions/EmailInformation/Email/EmailAddress	Yes	Five	String	50	Email address where the notification is sent.	
EmailText	/FreightShipRequest/Shipment/ShipmentServiceOptions/EmailInformation/Email/EmailText	No	One	String	400	Contents of the email to be sent.	Only used for AWB and BOL Email Types. Otherwise ignored.
UndeliverableEmailAddress	/FreightShipRequest/Shipment/ShipmentServiceOptions/EmailInformation/Email/UndeliverableEmailAddress	Yes	One	String	50	The address where an undeliverable email message is sent if the email with the notification is undeliverable.	

Name	XPath	Required	Max Allowed	Type	Length	Description	Validation Rules
Subject	/FreightShipRequest/Shipment/Ship mentServiceOptions/EMailInformatio n/Email/Subject	No	One	String	0..256	Email subject line.	Only used for AWB and BOL Email Types. Otherwise ignored.
PickupOptions	/FreightShipRequest/Shipment/Ship mentServiceOptions/PickupOptions	No	One	Container	N/A	PickupOptions Container.	
HolidayPickupIndicator	/FreightShipRequest/Shipment/Ship mentServiceOptions/PickupOptions/ HolidayPickupIndicator	No	One	String	0	The presence of the tag HolidayPickupIndicator indicates that the shipment requires a holiday pickup.	Ground freight only. Empty Tag.
InsidePickupIndicator	/FreightShipRequest/Shipment/Ship mentServiceOptions/PickupOptions/ insidePickupIndicator	No	One	String	0	The presence of the tag InsidePickupIndicator indicates that the shipment requires an inside pickup.	Ground freight only. Empty Tag.
ResidentialPickupIndicator	/FreightShipRequest/Shipment/Ship mentServiceOptions/PickupOptions/ ResidentialPickupIndicator	No	One	String	0	The presence of the tag ResidentialPickupIndicator indicates that the shipment requires a residential pickup.	Empty Tag.
WeekendPickupIndicator	/FreightShipRequest/Shipment/Ship mentServiceOptions/PickupOptions/ WeekendPickupIndicator	No	One	String	0	The presence of the tag WeekendPickupIndicator indicates that the shipment requires a weekend pickup.	Ground freight only. Empty Tag.
LiftGateRequiredIndicator	/FreightShipRequest/Shipment/Ship mentServiceOptions/PickupOptions/ LiftGateRequiredIndicator	No	One	String	0	The presence of the tag LiftGateRequiredIndicator indicates that the shipment requires a lift gate.	Empty Tag.

Name	XPath	Required	Max Allowed	Type	Length	Description	Validation Rules
HoldAtAirportForPickup	/FreightShipRequest/Shipment/Ship mentServiceOptions/PickupOptions/ HoldAtAirportForPickup	No	One	String	0	The presence of this tag indicates that the shipment needs to be held at the airport for pickup.	Air freight only. Empty Tag.
PickupFromDoorIndicator	/FreightShipRequest/Shipment/Ship mentServiceOptions/PickupOptions/ PickupFromDoorIndicator	No	One	String	0	The presence of the tag PickupFromDoorIndicator indicates that the shipment is going to be picked up from a door.	Air freight only. Empty Tag.
LimitedAccessPickupIndicator	/FreightShipRequest/Shipment/Ship mentServiceOptions/PickupOptions/L imitedAccessPickupIndicator	No	One	String	0	The presence of the tag LimitedAccessPickupIndicator indicates that there is limited access for the pickup.	
DeliveryOptions	/FreightShipRequest/Shipment/Ship mentServiceOptions/DeliveryOptions	No	One	Container	N/A	DeliveryOptions Container.	
CallBeforeDeliveryIndicator	/FreightShipRequest/Shipment/Ship mentServiceOptions/DeliveryOptions/ CallBeforeDeliveryIndicator	No	One	String	0	The presence of the tag CallBeforeDeliveryIndicator indicates that the shipment is going to be delivered after calling the consignee.	Ground freight only. Empty Tag.
ConstructionSiteDeliveryIndicator	/FreightShipRequest/Shipment/Ship mentServiceOptions/DeliveryOptions/ ConstructionSiteDeliveryIndicator	No	One	String	0	The presence of the tag ConstructionSiteDeliveryIndicator indicates that the shipment is going to be delivered at a construction site.	Ground freight only. Empty Tag.
HolidayDeliveryIndicator	/FreightShipRequest/Shipment/Ship mentServiceOptions/DeliveryOptions/ HolidayDeliveryIndicator	No	One	String	0	The presence of the tag HolidayDeliveryIndicator indicates that the shipment is going to be delivered on a holiday.	Ground freight only. Empty Tag.

Name	XPath	Required	Max Allowed	Type	Length	Description	Validation Rules
InsideDeliveryIndicator	/FreightShipRequest/Shipment/Ship mentServiceOptions/DeliveryOptions/ InsideDeliveryIndicator	No	One	String	0	The presence of the tag InsideDeliveryIndicator indicates that the shipment requires an inside delivery.	Ground freight only. Empty Tag.
ResidentialDeliveryIndicator	/FreightShipRequest/Shipment/Ship mentServiceOptions/DeliveryOptions/ ResidentialDeliveryIndicator	No	One	String	0	The presence of the tag ResidentialDeliveryIndicator indicates that the shipment requires a residential delivery.	Empty Tag.
WeekendDeliveryIndicator	/FreightShipRequest/Shipment/Ship mentServiceOptions/DeliveryOptions/ WeekendDeliveryIndicator	No	One	String	0	The presence of the tag WeekendDeliveryIndicator indicates that the shipment is going to be delivered on a weekend.	Ground freight only. Empty Tag.
LiftGateRequiredIndicator	/FreightShipRequest/Shipment/Ship mentServiceOptions/DeliveryOptions/ LiftGateRequiredIndicator	No	One	String	0	The presence of the tag LiftGateRequiredIndicator indicates that the shipment requires a lift gate.	Empty Tag.
SaturdayDeliveryIndicator	/FreightShipRequest/Shipment/Ship mentServiceOptions/DeliveryOptions/ SaturdayDeliveryIndicator	No	One	String	0	The presence of the tag SaturdayDeliveryIndicator indicates that the shipment is going to be delivered on a Saturday.	Air freight only. Empty Tag.
DeliveryToDoorIndicator	/FreightShipRequest/Shipment/Ship mentServiceOptions/DeliveryOptions/ DeliveryToDoorIndicator	No	One	String	0	The presence of the tag DeliveryToDoorIndicator indicates that the shipment is going to be delivered to door.	Air freight only. Empty Tag.
LimitedAccessDeliveryIndicator	/FreightShipRequest/Shipment/Ship mentServiceOptions/DeliveryOptions/ LimitedAccessDeliveryIndicator	No	One	String	0	The presence of the tag LimitedAccessDeliveryIndicator indicates that there is limited delivery access for the pickup.	

Name	XPath	Required	Max Allowed	Type	Length	Description	Validation Rules
OverSeasLeg	/FreightShipRequest/Shipment/ShipmentServiceOptions/OverSeasLeg	No	One	Container	N/A	OverSeasLeg Container.	Ground freight only. Accessorial required when origin or destination is Hawaii, Alaska, and Puerto Rico.
Dimensions	/FreightShipRequest/Shipment/ShipmentServiceOptions/OverSeasLeg/Dimensions	Yes*	One	Container	N/A	Dimensions Container.	Ground freight only.
Volume	/FreightShipRequest/Shipment/ShipmentServiceOptions/OverSeasLeg/Dimensions/Volume	Cond	One	String	16.2	Represents the size as volume.	Ground freight only. Volume being required if height, length, width is not specified. If volume is present then height, length, width is ignored. Valid characters are 0-9 and. (Decimal point). Limit to 2 digits after the decimal. The maximum length of the field is 16 excluding. and including the 2 decimal places.(#####.##,#####.##,#####)
Height	/FreightShipRequest/Shipment/ShipmentServiceOptions/OverSeasLeg/Dimensions/Height	Cond	One	String	18	The height used to determine dimensional size.	Ground freight only. Volume being required if height, length, width is not specified. If volume is present then height, length, width is ignored. Valid characters are 0-9 and. (Decimal point). Limit to 2 digits after the decimal. The maximum length of the field is 16 excluding. and including the 2 decimal places.(#####.##,#####.##,#####)

Name	XPath	Required	Max Allowed	Type	Length	Description	Validation Rules
Length	/FreightShipRequest/Shipment/ShipmentServiceOptions/OverSeasLeg/Dimensions/Length	Cond	One	String	18	The length used to determine dimensional size.	Ground freight only. Volume being required if height, length, width is not specified. If volume is present then height, length, width is ignored. Valid characters are 0-9 and. (Decimal point). Limit to 2 digits after the decimal. The maximum length of the field is 16 excluding. and including the 2 decimal places.(#####.##,#####.##,#####)
Width	/FreightShipRequest/Shipment/ShipmentServiceOptions/OverSeasLeg/Dimensions/Width	Cond	One	String	18	The width used to determine dimensional size.	Ground freight only. Volume being required if height, length, width is not specified. If volume is present then height, length, width is ignored. Valid characters are 0-9 and. (Decimal point). Limit to 2 digits after the decimal. The maximum length of the field is 16 excluding. and including the 2 decimal places.(#####.##,#####.##,#####)
UnitOfMeasurement	/FreightShipRequest/Shipment/ShipmentServiceOptions/OverSeasLeg/Dimensions/UnitOfMeasurement	Yes	One	Container	N/A	UnitOfMeasurement Container.	Ground freight only.

Name	XPath	Required	Max Allowed	Type	Length	Description	Validation Rules
Code	/FreightShipRequest/Shipment/ShipmentServiceOptions/OverSeasLeg/Dimensions/UnitOfMeasurement/Code	Yes	One	String	3	The code associated with the unit of measure for the OverSeasLeg dimension.	Ground freight only. Valid values are -CF - Cubic Feet
Description	/FreightShipRequest/Shipment/ShipmentServiceOptions/OverSeasLeg/Dimensions/UnitOfMeasurement/Description	No	One	String	35	A text description of the code for the unit of measure associated with the OverSeasLeg dimension.	Ground freight only.
Value	/FreightShipRequest/Shipment/ShipmentServiceOptions/OverSeasLeg/Value	Yes*	One	Container	N/A	Dimensions Value Container.	Ground freight only.
Cube	/FreightShipRequest/Shipment/ShipmentServiceOptions/OverSeasLeg/Value/Cube	Cond	One	Container	N/A	Dimensions Value Cube Container.	Ground freight only. Request should contain PricePerCubicFoot, PricePerCWT, or both.
CurrencyCode	/FreightShipRequest/Shipment/ShipmentServiceOptions/OverSeasLeg/Value/Cube/CurrencyCode	Yes*	One	String	3	Currency code type for Price per cubic feet.	Ground freight only. Valid Values are: USD - United States Dollar
MonetaryValue	/FreightShipRequest/Shipment/ShipmentServiceOptions/OverSeasLeg/Value/Cube/MonetaryValue	Yes*	One	String	16.2	Price per cubic feet.	Ground freight only. Valid characters are 0-9 and. (Decimal point). Limit to 2 digits after the decimal. The maximum length of the field is 16 excluding. and including the 2 decimal places.(#####.##,#####.#,#####)

Name	XPath	Required	Max Allowed	Type	Length	Description	Validation Rules
CWT	/FreightShipRequest/Shipment/Ship mentServiceOptions/OverSeasLeg/V alue/CWT	Cond	One	Container	N/A	Dimensions Value CWT Container.	Ground freight only. Request should contain PricePerCubicFoot, PricePerCWT, or both.
CurrencyCode	/FreightShipRequest/Shipment/Ship mentServiceOptions/OverSeasLeg/V alue/CWT/CurrencyCode	Yes*	One	String	3	Currency code type for Price per CWT.	Ground freight only. Valid Values are: USD - United States Dollar
MonetaryValue	/FreightShipRequest/Shipment/Ship mentServiceOptions/OverSeasLeg/V alue/CWT/MonetaryValue	Yes*	One	String	16.2	Price per CWT.	Ground freight only. Valid characters are 0-9 and. (Decimal point). Limit to 2 digits after the decimal. The maximum length of the field is 16 excluding, and including the 2 decimal places.(#####.## ,#####.##, #####)
COD	/FreightShipRequest/Shipment/Ship mentServiceOptions/COD	No	One	Container	N/A	COD Container.	Ground freight only.
CODValue	/FreightShipRequest/Shipment/Ship mentServiceOptions/COD/CODValue	Yes*	One	Container	N/A	CODValue Container.	Ground freight only.
CurrencyCode	/FreightShipRequest/Shipment/Ship mentServiceOptions/COD/CODValue /CurrencyCode	Yes	One	String	3	COD amount currency code type.	Ground freight only. Valid Values are: USD - United States Dollar



Name	XPath	Required	Max Allowed	Type	Length	Description	Validation Rules
MonetaryValue	/FreightShipRequest/Shipment/ShipmentServiceOptions/COD/CODValue/MonetaryValue	Yes	One	String	16.2	COD Amount.	Ground freight only. Valid characters are 0-9 and. (Decimal point). Limit to 2 digits after the decimal. The maximum length of the field is 16 excluding, and including the 2 decimal places.(#####.##,#####.##,#####)
CODPaymentMethod	/FreightShipRequest/Shipment/ShipmentServiceOptions/COD/CODPaymentMethod	Yes*	One	Container	N/A	CODPaymentMethod Container.	Ground freight only.
Code	/FreightShipRequest/Shipment/ShipmentServiceOptions/COD/CODPaymentMethod/Code	Yes	One	String	1	The code associated with the COD payment method for the shipment service options.	Ground freight only. See Appendix for a list of Valid values.
Description	/FreightShipRequest/Shipment/ShipmentServiceOptions/COD/CODPaymentMethod/Description	No	One	String	35	A text description of the code for the COD payment method associated with the shipment service options.	Ground freight only.
CODBillingOption	/FreightShipRequest/Shipment/ShipmentServiceOptions/COD/CODBillingOption	Yes*	One	Container	N/A	CODBillingOption Container.	Ground freight only.
Code	/FreightShipRequest/Shipment/ShipmentServiceOptions/COD/CODBillingOption/Code	Yes	One	String	2	The code associated with the COD billing option for the shipment service options.	Ground freight only. Valid values are: 01 - Prepaid 02 - Freight Collect

Name	XPath	Required	Max Allowed	Type	Length	Description	Validation Rules
Description	/FreightShipRequest/Shipment/ShipmentServiceOptions/COD/CODBillingOption/Description	No	One	String	35	A text description of the code for the COD billing option associated with the shipment service options.	Ground freight only.
RemitTo	/FreightShipRequest/Shipment/ShipmentServiceOptions/COD/RemitTo	Yes*	One	Container	N/A	RemitTo Container.	Ground freight only.
Name	/FreightShipRequest/Shipment/ShipmentServiceOptions/COD/RemitTo/Name	Yes	One	String	35	The payee company name for the COD charges.	Ground freight only.
Address	/FreightShipRequest/Shipment/ShipmentServiceOptions/COD/RemitTo/Address	Yes	One	Container	N/A	Address Container.	Ground freight only.
AddressLine	/FreightShipRequest/Shipment/ShipmentServiceOptions/COD/RemitTo/Address/AddressLine	Yes	Three	String	35	Payee Street address for the COD charges.	Ground freight only. Max Occurrence must be 3
City	/FreightShipRequest/Shipment/ShipmentServiceOptions/COD/RemitTo/Address/City	Yes	One	String	30	Payee city code for the COD charges.	Ground freight only.
StateProvinceCode	/FreightShipRequest/Shipment/ShipmentServiceOptions/COD/RemitTo/Address/StateProvinceCode	No	One	String	5	Payee state or province code for the COD charges.	Ground freight only. Required for certain countries.

Name	XPath	Required	Max Allowed	Type	Length	Description	Validation Rules
Town	/FreightShipRequest/Shipment/Ship mentServiceOptions/COD/RemitTo/A ddress/Town	No	One	String	30	Payee town code for the COD charges.	Ground freight only.
PostalCode	/FreightShipRequest/Shipment/Ship mentServiceOptions/COD/RemitTo/A ddress/PostalCode	No	One	String	10	Payee postal code for the COD charges.	Ground freight only. Required if the country code is US or CA
CountryCode	/FreightShipRequest/Shipment/Ship mentServiceOptions/COD/RemitTo/A ddress/CountryCode	Yes	One	String	2	Payee country code for the COD charges.	Ground freight only.
AttentionName	/FreightShipRequest/Shipment/Ship mentServiceOptions/COD/RemitTo/A ttentionName	No	One	String	35	Payee contact name for the COD charges.	Ground freight only.
Phone	/FreightShipRequest/Shipment/Ship mentServiceOptions/COD/RemitTo/P hone	No	One	Container	N/A	Phone Container.	Ground freight only.
Number	/FreightShipRequest/Shipment/Ship mentServiceOptions/COD/RemitTo/P hone/Number	Yes	One	String	15	Payee Phone number for the COD charges.	Ground freight only.
Extension	/FreightShipRequest/Shipment/Ship mentServiceOptions/COD/RemitTo/P hone/Extension	No	One	String	4	Payee phone extension for the COD charges.	Ground freight only.

Name	XPath	Required	Max Allowed	Type	Length	Description	Validation Rules
FaxNumber	/FreightShipRequest/Shipment/ShipmentServiceOptions/COD/RemitTo/FaxNumber	No	One	String	15	Payee fax number for the COD charges.	Ground freight only.
EEmailAddress	/FreightShipRequest/Shipment/ShipmentServiceOptions/COD/RemitTo/EEmailAddress	No	One	String	50	Payee email address for the COD charges.	Ground freight only.
DangerousGoods	/FreightShipRequest/Shipment/ShipmentServiceOptions/DangerousGoods	No	One	Container	N/A	DangerousGoods Container.	
Name	/FreightShipRequest/Shipment/ShipmentServiceOptions/DangerousGoods/Name	Yes*	One	String	35	The contact name for question re: Dangerous Goods.	
Phone	/FreightShipRequest/Shipment/ShipmentServiceOptions/DangerousGoods/Phone	Yes*	One	Container	N/A	Phone Container.	
Number	/FreightShipRequest/Shipment/ShipmentServiceOptions/DangerousGoods/Phone/Number	Yes	One	String	15	The contact phone number for question re: Dangerous Goods	
Extension	/FreightShipRequest/Shipment/ShipmentServiceOptions/DangerousGoods/Phone/Extension	No	One	String	4	The contact phone extension for question re: Dangerous Goods	

Name	XPath	Required	Max Allowed	Type	Length	Description	Validation Rules
TransportationMode	/FreightShipRequest/Shipment/Ship mentServiceOptions/DangerousGood s/TransportationMode	No	One	Container	N/A	TransportationMode Container.	
Code	/FreightShipRequest/Shipment/Ship mentServiceOptions/DangerousGood s/TransportationMode/Code	Yes*	One	String	20	The code associated with the transportation mode for the dangerous goods. Valid Values: Cargo Aircraft Only Passenger Aircraft	
Description	/FreightShipRequest/Shipment/Ship mentServiceOptions/DangerousGood s/TransportationMode/Description	No	One	String	35	A text description of the code for the transportation mode associated with the dangerous goods.	
SortingAndSegregating	/FreightShipRequest/Shipment/Ship mentServiceOptions/SortingAndSegr egating	No	One	Container	N/A	SortingAndSegregating Container.	Ground freight only.
Quantity	/FreightShipRequest/Shipment/Ship mentServiceOptions/SortingAndSegr egating/Quantity	Yes*	One	String	6	Quantity of units to be sorted/segregated.	Ground freight only.
DeclaredValue	/FreightShipRequest/Shipment/Ship mentServiceOptions/DeclaredValue	No	One	Container	N/A	DeclaredValue Container.	Ground freight only.
CurrencyCode	/FreightShipRequest/Shipment/Ship mentServiceOptions/DeclaredValue/ CurrencyCode	Yes*	One	String	3	Declared value amount currency type.	Ground freight only. Valid Values are: USD - United States Dollar

Name	XPath	Required	Max Allowed	Type	Length	Description	Validation Rules
MonetaryValue	/FreightShipRequest/Shipment/ShipmentServiceOptions/DeclaredValue/MonetaryValue	Yes*	One	String	16.2	Declared value amount.	Ground freight only. Valid characters are 0-9 and. (Decimal point). Limit to 2 digits after the decimal. The maximum length of the field is 16 excluding. and including the 2 decimal places.(#####.##,#####.##,#####)
CustomsValue	/FreightShipRequest/Shipment/ShipmentServiceOptions/CustomsValue	No	One	Container	N/A	CustomsValue Container.	Air freight only.
CurrencyCode	/FreightShipRequest/Shipment/ShipmentServiceOptions/CustomsValue/CurrencyCode	Yes*	One	String	3	Customs value amount currency type.	Air freight only. Valid Values are: USD - United States Dollar
MonetaryValue	/FreightShipRequest/Shipment/ShipmentServiceOptions/CustomsValue/MonetaryValue	Yes*	One	String	16.2	Customs value amount.	Air freight only. Valid characters are 0-9 and. (Decimal point). Limit to 2 digits after the decimal. The maximum length of the field is 16 excluding. and including the 2 decimal places.(#####.##,#####.##,#####)
DeliveryDutiesPaidIndicator	/FreightShipRequest/Shipment/ShipmentServiceOptions/DeliveryDutiesPaidIndicator	Cond	One	String	0	The presence of the tag DeliveryDutiesPaidIndicator indicates that the duties have already been paid.	Air freight only. Applicable an Air freight shipment when Third Party or Prepaid is the billing option and DeliveryDutiesUnpaidIndicator or is not present. Applicable only for a international shipment, not valid for a domestic shipment.

Name	XPath	Required	Max Allowed	Type	Length	Description	Validation Rules
DeliveryDutiesUnpaidIndicator	/FreightShipRequest/Shipment/ShipmentServiceOptions/DeliveryDutiesUnpaidIndicator	Cond	One	String	0	The presence of the tag DeliveryDutiesUnpaidIndicator indicates that the duties have not been paid already.	Air freight only. Applicable an Air freight shipment when Third Party or Prepaid is the billing option and DeliveryDutiesPaidIndicator is not present. Applicable only for a international shipment, not valid for a domestic shipment.
HandlingCharge	/FreightShipRequest/Shipment/ShipmentServiceOptions/HandlingCharge	No	One	Container	N/A	HandlingCharge Container.	Ground freight only.
Percentage	/FreightShipRequest/Shipment/ShipmentServiceOptions/HandlingCharge/Percentage	Cond	One	String	7.2	Percentage amount consistent with the handling charge.	Ground freight only. Either Percentage or Amount needs to be present, not both. Valid characters are 0-9 and. (Decimal point). Limit to 2 digits after the decimal. The maximum length of the field is 7 excluding. and including the 2 decimal places.(#####.##,#####.##,#####)Negative value is allowed.
Amount	/FreightShipRequest/Shipment/ShipmentServiceOptions/HandlingCharge/Amount	Cond	One	Container	N/A	HandlingCharge Amount Container.	Ground freight only. Either Percentage or Amount needs to be present, not both.
CurrencyCode	/FreightShipRequest/Shipment/ShipmentServiceOptions/HandlingCharge/Amount/CurrencyCode	Yes*	One	String	3	Handling charge amount currency type.	Ground freight only.

Name	XPath	Required	Max Allowed	Type	Length	Description	Validation Rules
MonetaryValue	/FreightShipRequest/Shipment/ShipmentServiceOptions/HandlingCharge/Amount/MonetaryValue	Yes*	One	String	16.2	Handling Charge amount.	Ground freight only. Valid characters are 0-9 and. (Decimal point). Limit to 2 digits after the decimal. The maximum length of the field is 16 excluding. and including the 2 decimal places.(#####.##,#####.##,#####) Negative value is allowed.
CustomsClearanceIndicator	/FreightShipRequest/Shipment/ShipmentServiceOptions/CustomsClearanceIndicator	No	One	String	0	The presence of the tag CustomsClearanceIndicator indicates that the customs clearance is required.	Air freight only. Empty tag.
FreezableProtectionIndicator	/FreightShipRequest/Shipment/ShipmentServiceOptions/FreezableProtectionIndicator	No	One	String	0	The presence of the tag FreezableProtectionIndicator indicates that the freezable protection is required.	
ExtremeLengthIndicator	/FreightShipRequest/Shipment/ShipmentServiceOptions/ExtremeLengthIndicator	No	One	String	0	The presence of the tag ExtremeLengthIndicator indicates that the package is of extreme length.	
ExcessDeclaredValue	/FreightShipRequest/Shipment/ShipmentServiceOptions/ExcessDeclaredValue	No	One	Container	N/A	ExcessDeclaredValue Container.	Ground freight only.
CurrencyCode	/FreightShipRequest/Shipment/ShipmentServiceOptions/ExcessDeclaredValue/CurrencyCode	Yes*	One	String	3	Excess Declared value amount currency type.	Ground freight only.



Name	XPath	Required	Max Allowed	Type	Length	Description	Validation Rules
MonetaryValue	/FreightShipRequest/Shipment/Ship mentServiceOptions/ExcessDeclared Value/MonetaryValue	Yes*	One	String	16.2	Excess Declared value amount.	Ground freight only.
PickupRequest	/FreightShipRequest/Shipment/Picku pRequest	Cond	One	Container	N/A	PickupRequest Container.	Required for air shipment.
AdditionalComments	/FreightShipRequest/Shipment/Picku pRequest/AdditionalComments	No	One	String	500	Additional pickup comments or instructions	Ground freight only.
Requester	/FreightShipRequest/Shipment/Picku pRequest/Requester	Cond*	One	Container	N/A	Requester Container. Also referred to as caller.	Ground freight only. Required for ground shipments if PickupRequest container is present.
ThirdPartyIndicator	/FreightShipRequest/Shipment/Picku pRequest/Requester/ThirdPartyIndic ator	No	One	String	0	Indicates whether the requester is Consignee, Third Party, Shipper, other.	Ground freight only. Empty tag.
AttentionName	/FreightShipRequest/Shipment/Picku pRequest/Requester/AttentionName	Yes	One	String	35	Requester's name.	Ground freight only.
EEmailAddress	/FreightShipRequest/Shipment/Picku pRequest/Requester/EEmailAddress	Yes	One	String	50	Requester's email address.	Ground freight only.

Name	XPath	Required	Max Allowed	Type	Length	Description	Validation Rules
Name	/FreightShipRequest/Shipment/PickupRequest/Requester/Name	Yes	One	String	35	Requester's company name.	Ground freight only.
Phone	/FreightShipRequest/Shipment/PickupRequest/Requester/Phone	Yes	One	Container	N/A	Phone Container	Ground freight only.
Number	/FreightShipRequest/Shipment/PickupRequest/Requester/Phone/Number	Yes	One	String	15	Requester's phone number.	Ground freight only.
Extension	/FreightShipRequest/Shipment/PickupRequest/Requester/Phone/Extension	No	One	String	4	Requester's phone extension.	Ground freight only.
PickupDate	/FreightShipRequest/Shipment/PickupRequest/PickupDate	Yes*	One	String	8	Date of the Pickup. Format is YYYYMMDD.	Air Pickup may be scheduled up to 14 days in the future. Ground pickup may be scheduled up to 42 days in the future.  Note: - This element will act as PickupDate or DropOffDate based on the presence of PickupTimeReady or DropOffTimeReady element.

Name	XPath	Required	Max Allowed	Type	Length	Description	Validation Rules
EarliestTimeReady	/FreightShipRequest/Shipment/PickupRequest/EarliestTimeReady	Cond	One	String	4	The earliest time a shipment is ready to be picked up.	Ground freight only. The formatting used for time needs to be HHMM where HH is the hour and MM is the minute. The time is on a 24 hour clock. Valid values for hours are 00 to 23 and the valid values for minutes are 00 to 59.  Note:- Applicable for ground shipment only.
LatestTimeReady	/FreightShipRequest/Shipment/PickupRequest/LatestTimeReady	Yes*	One	String	4	The latest time a shipment can be picked up. Can be also referred as the Closing Time for a pickup time window.	The formatting used for time needs to be HHMM where HH is the hour and MM is the minute. The time is on a 24 hour clock. Valid values for hours are 00 to 23 and the valid values for minutes are 00 to 59. Optional if the account type is House.
PickupTimeReady	/FreightShipRequest/Shipment/PickupRequest/PickupTimeReady	No	One	String	4	Mutually exclusive with DropoffTimeReady.	Air freight only. The formatting used for time needs to be HHMM where HH is the hour and MM is the minute. The time is on a 24 hour clock. Valid values for hours are 00 to 23 and the valid values for minutes are 00 to 59. Optional if the account type is House.

Name	XPath	Required	Max Allowed	Type	Length	Description	Validation Rules
DropoffTimeReady	/FreightShipRequest/Shipment/PickupRequest/DropoffTimeReady	No	One	String	4	Mutually exclusive with PickupTimeReady.	Air freight only. The formatting used for time needs to be HHMM where HH is the hour and MM is the minute. The time is on a 24 hour clock. Valid values for hours are 00 to 23 and the valid values for minutes are 00 to 59. Optional if the account type is House.
POM	/FreightShipRequest/Shipment/PickupRequest/POM	No	One	Container	N/A	POM container	
POMNumber	/FreightShipRequest/Shipment/PickupRequest/POM/POMNumber	No	One	String	16	An identifier associated to the pickup request (may or may not be created by the user)	
POMNumberType	/FreightShipRequest/Shipment/PickupRequest/POM/POMNumberType	No	One	String	23	Identifies the kind of number used to identify the POM shipment	Valid values: Load number, SID number, PO number, Project, Quote number, VPRC, P&M, Release number, RA number, Task, Pickup number, Pickup Reference number, PRO number, BOL number, Other
PickupNotifications	/FreightShipRequest/Shipment/PickupRequest/POM/PickupNotifications	No	One	Container	N/A	Container for pre-pickp notifications events	

Name	XPath	Required	Max Allowed	Type	Length	Description	Validation Rules
CompanyName	/FreightShipRequest/Shipment/PickupRequest/POM/PickupNotifications/CompanyName	No	One	String	35	Name of company	
EMailNotification	/FreightShipRequest/Shipment/PickupRequest/POM/PickupNotifications/EMailNotification	No	Five	Container	N/A	Container for email notifications	
EMailAddress	/FreightShipRequest/Shipment/PickupRequest/POM/PickupNotifications/EMailNotification/EMailAddress	No	One	String	50	email address which should receive pre-pickup notification	
EventType	/FreightShipRequest/Shipment/PickupRequest/POM/PickupNotifications/EMailNotification/EventType	No	Four	String		Type of event for POM Notification. Add up to four events.	Valid values: RR = PICKUP_REQUEST_CONFIRM EN = DRIVER_EN_ROUTE PS = PICKUP_SECURED PX = PICKUP_EXCEPTION
FailedEMail	/FreightShipRequest/Shipment/PickupRequest/POM/PickupNotifications/FailedEMail	No	One	String	50	Alternate email address to receive failure notifications	
Documents	/FreightShipRequest/Shipment/Documents	No	One	Container	N/A	Documents Container.	

Name	XPath	Required	Max Allowed	Type	Length	Description	Validation Rules
Image	/FreightShipRequest/Shipment/Documents/Image	No	Many	Container	N/A	Image Container.	
Type	/FreightShipRequest/Shipment/Documents/Image/Type	Yes*	One	Container	N/A	Image Type Container.	
Code	/FreightShipRequest/Shipment/Documents/Image/Type/Code	Yes	One	String	2	Type of the image contained in Documents Image.	Valid values are: 10 - AWB; 20 - UPS BOL; 21 - VICS BOL; 30 - Label . AWB (Air Way Bill) is only valid/associated with Air Freight and not applicable to Ground Freight.
Description	/FreightShipRequest/Shipment/Documents/Image/Type/Description	No	One	String	35	Description of image type contained in Documents Image.	
LabelsPerPage	/FreightShipRequest/Shipment/Documents/Image/LabelsPerPage	Cond	One	String	1	Number of Labels to print per page.	Required when label type is Label. Otherwise the element and child elements are ignored. Valid values are 124
Format	/FreightShipRequest/Shipment/Documents/Image/Format	Yes*	One	Container	N/A	ImageFormat Container.	

Name	XPath	Required	Max Allowed	Type	Length	Description	Validation Rules
Code	/FreightShipRequest/Shipment/Documents/Image/Format/Code	Yes	One	String	2	Format of the image contained in Documents Image.	Valid Values are 01 - pdf
Description	/FreightShipRequest/Shipment/Documents/Image/Format/Description	No	One	String	35	Description of image format contained in Documents Image.	
PrintFormat	/FreightShipRequest/Shipment/Documents/Image/PrintFormat	No	One	Container	N/A	PrintFormat Container.	Required when label type is Label. Otherwise the element and child elements are ignored.
Code	/FreightShipRequest/Shipment/Documents/Image/PrintFormat/Code	Yes*	One	String	2	Print Format of the image contained in Documents Image.	Valid Values are: 01 - Laser 02 - Thermal
Description	/FreightShipRequest/Shipment/Documents/Image/PrintFormat/Description	No	One	String	35	Description of the print format of the image contained in Documents Image.	
PrintSize	/FreightShipRequest/Shipment/Documents/Image/PrintSize	No	One	Container	N/A	PrintSize Container.	Required when label type is Label. Otherwise the element and child elements are ignored. Valid combination of Length and Width children are (Length X Width) 4 X 6, 4 X 8, 8 X 11 (Recommended for Laser Printer type)

Name	XPath	Required	Max Allowed	Type	Length	Description	Validation Rules
Length	/FreightShipRequest/Shipment/Documents/Image/PrintSize/Length	Yes*	One	String	16.2	The lengths of the image print size.	
Width	/FreightShipRequest/Shipment/Documents/Image/PrintSize/Width	Yes*	One	String	16.2	The widths of the image print size.	
PackingList	/FreightShipRequest/Shipment/Documents/PackingList	No	One	Container	N/A	PackingList Container.	
ShipFrom	/FreightShipRequest/Shipment/Documents/PackingList/ShipFrom	No	One	Container	N/A	PackingList ShipFrom Container.	
Name	/FreightShipRequest/Shipment/Documents/PackingList/ShipFrom/Name	Yes*	One	String	35	The shipper's name or company name.	
AttentionName	/FreightShipRequest/Shipment/Documents/PackingList/ShipFrom/AttentionName	No	One	String	35	Contact name at the ship from location.	
Address	/FreightShipRequest/Shipment/Documents/PackingList/ShipFrom/Addresses	No	One	Container	N/A	Shipper's Address Container.	



Name	XPath	Required	Max Allowed	Type	Length	Description	Validation Rules
AddressLine	/FreightShipRequest/Shipment/Documents/PackingList/ShipFrom/Addresses/AddressLine	Yes*	Three	String	35	The Shipper's street address.	Max Occurrence must be 3
City	/FreightShipRequest/Shipment/Documents/PackingList/ShipFrom/Addresses/City	Yes*	One	String	30	The Shipper's city.	
StateProvinceCode	/FreightShipRequest/Shipment/Documents/PackingList/ShipFrom/Addresses/StateProvinceCode	No	One	String	5	The Shipper's state or province code.	
Town	/FreightShipRequest/Shipment/Documents/PackingList/ShipFrom/Addresses/Town	No	One	String	15	The shipper's town code.	
PostalCode	/FreightShipRequest/Shipment/Documents/PackingList/ShipFrom/Addresses/PostalCode	No	One	String	9	The shipper's postal code.	
CountryCode	/FreightShipRequest/Shipment/Documents/PackingList/ShipFrom/Addresses/CountryCode	Yes*	One	String	2	The shipper's country code.	
PhoneNumber	/FreightShipRequest/Shipment/Documents/PackingList/ShipFrom/PhoneNumber	No	One	String	15	The shipper's phone number.	

Name	XPath	Required	Max Allowed	Type	Length	Description	Validation Rules
EMailAddress	/FreightShipRequest/Shipment/Documents/PackingList/ShipFrom/EMailAddress	No	One	String	50	Shipper's email address.	
PhoneExtension	/FreightShipRequest/Shipment/Documents/PackingList/ShipFrom/PhoneExtension	No	One	String	4	The shipper's phone extension.	
ShipTo	/FreightShipRequest/Shipment/Documents/PackingList/ShipTo	No	One	Container	N/A	PackingList ShipTo Container.	
Name	/FreightShipRequest/Shipment/Documents/PackingList/ShipTo/Name	Yes*	One	String	35	The Consignee's name or company name.	
AttentionName	/FreightShipRequest/Shipment/Documents/PackingList/ShipTo/AttentionName	No	One	String	35	Contact name at the ship to location.	
Address	/FreightShipRequest/Shipment/Documents/PackingList/ShipTo/Address	No	One	Container	N/A	Consignee's Address Container.	
AddressLine	/FreightShipRequest/Shipment/Documents/PackingList/ShipTo/Address/AddressLine	Yes*	Three	String	35	The consignee's street address.	Max Occurrence must be 3

Name	XPath	Required	Max Allowed	Type	Length	Description	Validation Rules
City	/FreightShipRequest/Shipment/Documents/PackingList/ShipTo/Address/City	Yes*	One	String	30	The consignee's city.	
StateProvinceCode	/FreightShipRequest/Shipment/Documents/PackingList/ShipTo/Address/StateProvinceCode	No	One	String	5	The consignee's state or province code.	
Town	/FreightShipRequest/Shipment/Documents/PackingList/ShipTo/Address/Town	No	One	String	15	The consignee's town code.	
PostalCode	/FreightShipRequest/Shipment/Documents/PackingList/ShipTo/Address/PostalCode	No	One	String	9	The consignee's postal code.	
CountryCode	/FreightShipRequest/Shipment/Documents/PackingList/ShipTo/Address/CountryCode	Yes*	One	String	2	The consignee's country code.	
PhoneNumber	/FreightShipRequest/Shipment/Documents/PackingList/ShipTo/PhoneNumber	No	One	String	15	The consignee's phone number.	
EEmailAddress	/FreightShipRequest/Shipment/Documents/PackingList/ShipTo/EEmailAddress	No	One	String	50	Consignee's email address.	

Name	XPath	Required	Max Allowed	Type	Length	Description	Validation Rules
PhoneExtension	/FreightShipRequest/Shipment/Documents/PackingList/ShipTo/PhoneExtension	No	One	String	4	The consignee's phone extension.	
Reference	/FreightShipRequest/Shipment/Documents/PackingList/Reference	No	Two	Container	N/A	Reference Container.	Only two references are allowed. If more than 2 references are provided, then only the first two will be used and the subsequent reference containers will be ignored.
Label	/FreightShipRequest/Shipment/Documents/PackingList/Reference/Label	No	One	String	30	Reference Label.	
Value	/FreightShipRequest/Shipment/Documents/PackingList/Reference/Value	Yes*	One	String	30	Reference Value.	
HandlingUnit	/FreightShipRequest/Shipment/Documents/PackingList/HandlingUnit	No	One	Container	N/A	HandlingUnit Container.	
Commodity	/FreightShipRequest/Shipment/Documents/PackingList/HandlingUnit/Commodity	No	Many	Container	N/A	Commodity Container.	

Name	XPath	Required	Max Allowed	Type	Length	Description	Validation Rules
NumberOfPieces	/FreightShipRequest/Shipment/Documents/PackingList/HandlingUnit/Commodity/NumberOfPieces	No	One	String	3	Number of Pieces.	
PackagingType	/FreightShipRequest/Shipment/Documents/PackingList/HandlingUnit/Commodity/PackagingType	No	One	Container	N/A	PackagingType Container.	
Code	/FreightShipRequest/Shipment/Documents/PackingList/HandlingUnit/Commodity/PackagingType/Code	Yes*	One	String	3	Code associated with the Packaging Type.	See Appendix for the list of possible packaging type.
Description	/FreightShipRequest/Shipment/Documents/PackingList/HandlingUnit/Commodity/PackagingType/Description	No	One	String	35	Description for the code associated with the Packaging Type.	
DangerousGoodsIndicator	/FreightShipRequest/Shipment/Documents/PackingList/HandlingUnit/Commodity/DangerousGoodsIndicator	No	One	String	0	Hazmat Indicator.	
Description	/FreightShipRequest/Shipment/Documents/PackingList/HandlingUnit/Commodity/Description	No	One	String	150	Description of articles, special marks, freight codes.	
NMFCCommodityCode	/FreightShipRequest/Shipment/Documents/PackingList/HandlingUnit/Commodity/NMFCCommodityCode	No	One	String	8	NMFC.	

Name	XPath	Required	Max Allowed	Type	Length	Description	Validation Rules
FreightClass	/FreightShipRequest/Shipment/Documents/PackingList/HandlingUnit/Commodity/FreightClass	No	One	String	4	Class.	
Dimensions	/FreightShipRequest/Shipment/Documents/PackingList/HandlingUnit/Commodity/Dimensions	No	One	Container	N/A	Dimensions Container.	
Length	/FreightShipRequest/Shipment/Documents/PackingList/HandlingUnit/Commodity/Dimensions/Length	Yes*	One	String	5	Dimension - Length.	
Width	/FreightShipRequest/Shipment/Documents/PackingList/HandlingUnit/Commodity/Dimensions/Width	Yes*	One	String	5	Dimension - Width.	
Height	/FreightShipRequest/Shipment/Documents/PackingList/HandlingUnit/Commodity/Dimensions/Height	Yes*	One	String	5	Dimension - Height.	
Weight	/FreightShipRequest/Shipment/Documents/PackingList/HandlingUnit/Commodity/Weight	No	One	String	7	Weight of the package.	
CommodityValue	/FreightShipRequest/Shipment/Documents/PackingList/HandlingUnit/Commodity/CommodityValue	No	One	String	7	Unit price of the commodity.	

Name	XPath	Required	Max Allowed	Type	Length	Description	Validation Rules
SpecialInstructions	/FreightShipRequest/Shipment/Documents/PackingList/HandlingUnit/SpecialInstructions	No	One	String	500	Special instructions or special memo.	
TotalNumberOfPieces	/FreightShipRequest/Shipment/Documents/PackingList/HandlingUnit/TotalNumberOfPieces	No	One	String	5	Total number of pieces.	
TotalWeight	/FreightShipRequest/Shipment/Documents/PackingList/HandlingUnit/TotalWeight	No	One	String	12	Total weight of all the commodities.	
UnitOfMeasurement	/FreightShipRequest/Shipment/Documents/PackingList/HandlingUnit/UnitOfMeasurement	No	One	Container	N/A	UnitOfMeasurement Container.	
Code	/FreightShipRequest/Shipment/Documents/PackingList/HandlingUnit/UnitOfMeasurement/Code	Yes*	One	String	3	Code associated with the Unit of measurement. This value applies to the weight of all the commodities.	
Description	/FreightShipRequest/Shipment/Documents/PackingList/HandlingUnit/UnitOfMeasurement/Description	No	One	String	35	Description of the code associated with the Unit of measurement.	
CurrencyCode	/FreightShipRequest/Shipment/Documents/PackingList/HandlingUnit/CurrencyCode	No	One	String	3	Currency code. This value applies to the unit price of all the commodities.	

Name	XPath	Required	Max Allowed	Type	Length	Description	Validation Rules
InternationalForms	/FreightShipRequest/Shipment/Documents/InternationalForms	No	One	Container	N/A	InternationalForms Container.	
FormType	/FreightShipRequest/Shipment/Documents/InternationalForms/FormType	Yes*	Four	String	2	Indicates the name of the International form requested.	<p>Possible Values are:  01 - Invoice;  02 - SED;  03 - CO;  04 - NAFTA CO;  05 - Partial Invoice.  For shipment with return service, 01 or 05 are the only valid values.</p> <p>Note: 01 and 05 are mutually exclusive and 05 is only valid for return shipments only.</p>
AdditionalDocumentIndicator	/FreightShipRequest/Shipment/Documents/InternationalForms/AdditionalDocumentIndicator	No	One	String	0	Presence of the indicator means user will supply additional document, such as SED, NAFTA_CO or CO.	<p>This indicator should be set when the shipper intends to utilize UPS paperless invoice functionality AND the shipper has SELF-PREPARED other International Forms (SED, CO, NAFTA CO) to accompany the shipment. It is evaluated only when:</p> <ol style="list-style-type: none"> <li>1. Account is paperless enabled.</li> <li>2. Movement requires an invoice.</li> <li>3. Destination country accepts paperless invoice.</li> <li>4. Invoice data is supplied by the client and the data passes validation.</li> </ol>



Name	XPath	Required	Max Allowed	Type	Length	Description	Validation Rules
FormGroupIdName	/FreightShipRequest/Shipment/Documents/InternationalForms/FormGroupIdName	No	One	String	50	Contains description text which identifies the group of International forms. This element does not appear on the forms.	
SEDFilingOption	/FreightShipRequest/Shipment/Documents/InternationalForms/SEDFilingOption	Cond	One	String	2	Indicates the SED filing option.	Applicable for SED form and is required. Valid value is: 01 - Shipper filing
Contacts	/FreightShipRequest/Shipment/Documents/InternationalForms/Contacts	Cond	One	Container	N/A	Holds the contact information of various parties.	Applicable for SED form and NAFTA CO only. Required for NAFTA CO and SED. Ultimate consignee contact information is required for SED. Producer contact information is required for NAFTA CO
ForwardAgent	/FreightShipRequest/Shipment/Documents/InternationalForms/Contacts/ForwardAgent	No	One	Container	N/A	The forwarding agent is the company or person acting as agent in the trans-shipping of freight to the destination country.	Applicable for SED form only.
CompanyName	/FreightShipRequest/Shipment/Documents/InternationalForms/Contacts/ForwardAgent/CompanyName	Yes*	One	String	1..35	Company Name or the Individual name of the Forwarding agent.	Applicable for SED form only.
TaxIdentificationNumber	/FreightShipRequest/Shipment/Documents/InternationalForms/Contacts/ForwardAgent/TaxIdentificationNumber	Yes*	One	String	1..15	Tax ID of the Forwarding agent.	Applicable for SED form only.

Name	XPath	Required	Max Allowed	Type	Length	Description	Validation Rules
Address	/FreightShipRequest/Shipment/Documents/InternationalForms/Contacts/ForwardAgent/Address	Yes*	One	Container	N/A	Address information of the Forwarding agent.	Applicable for SED form only.
AddressLine	/FreightShipRequest/Shipment/Documents/InternationalForms/Contacts/ForwardAgent/Address/AddressLine	Yes*	Three	String	1..35	Address line of the Forwarding agent.	Max Occurrence must be 3
City	/FreightShipRequest/Shipment/Documents/InternationalForms/Contacts/ForwardAgent/Address/City	Yes*	One	String	1..30	City of the Forwarding agent.	Applicable for SED form only.
StateProvinceCode	/FreightShipRequest/Shipment/Documents/InternationalForms/Contacts/ForwardAgent/Address/StateProvinceCode	Cond	One	String	1..5	State of the Forwarding agent.	Applicable for SED form only. Required for certain countries.
Town	/FreightShipRequest/Shipment/Documents/InternationalForms/Contacts/ForwardAgent/Address/Town	No	One	String	1..30	Town of the Forwarding agent	
PostalCode	/FreightShipRequest/Shipment/Documents/InternationalForms/Contacts/ForwardAgent/Address/PostalCode	Cond	One	String	1..9	Postal code of the Forwarding agent.	Applicable for SED form only. Required for certain countries. The length of the postal code depends on the country code.
CountryCode	/FreightShipRequest/Shipment/Documents/InternationalForms/Contacts/ForwardAgent/Address/CountryCode	Yes*	One	String	2	Country code of the Forwarding agent.	Applicable for SED form only.

Name	XPath	Required	Max Allowed	Type	Length	Description	Validation Rules
UltimateConsignee	/FreightShipRequest/Shipment/Documents/InternationalForms/Contacts/UltimateConsignee	Cond	One	Container	N/A	The ultimate consignee is the person or company who receives the goods for end-use or the person or company listed on the export license. This is the end-user of the goods.	Applicable for SED form only. Required when the form requested is SED.
CompanyName	/FreightShipRequest/Shipment/Documents/InternationalForms/Contacts/UltimateConsignee/CompanyName	Yes*	One	String	1..35	Company Name or the Individual name of the Ultimate consignee.	Applicable for SED form only.
Address	/FreightShipRequest/Shipment/Documents/InternationalForms/Contacts/UltimateConsignee/Address	Yes*	One	Container	N/A	Address information of the Ultimate consignee.	Applicable for SED form only.
AddressLine	/FreightShipRequest/Shipment/Documents/InternationalForms/Contacts/UltimateConsignee/Address/AddressLine	Yes*	Three	String	1..35	Address line of the Ultimate consignee.	Max Occurrence must be 3
City	/FreightShipRequest/Shipment/Documents/InternationalForms/Contacts/UltimateConsignee/Address/City	Yes*	One	String	1..30	City of the Ultimate consignee.	Applicable for SED form only.
StateProvinceCode	/FreightShipRequest/Shipment/Documents/InternationalForms/Contacts/UltimateConsignee/Address/StateProvinceCode	Cond	One	String	1..5	State of the Ultimate consignee.	Applicable for SED form only. Required for certain countries
Town	/FreightShipRequest/Shipment/Documents/InternationalForms/Contacts/UltimateConsignee/Address/Town	No	One	String	1..30	Town of the Ultimate consignee	

Name	XPath	Required	Max Allowed	Type	Length	Description	Validation Rules
PostalCode	/FreightShipRequest/Shipment/Documents/InternationalForms/Contacts/UltimateConsignee/Address/PostalCode	Cond	One	String	1..9	Postal code of the Ultimate consignee.	Applicable for SED form only. Required for certain countries. The length of the postal code depends on the country code.
CountryCode	/FreightShipRequest/Shipment/Documents/InternationalForms/Contacts/UltimateConsignee/Address/CountryCode	Yes*	One	String	2	Country code of the Ultimate consignee.	Applicable for SED form only.
IntermediateConsignee	/FreightShipRequest/Shipment/Documents/InternationalForms/Contacts/IntermediateConsignee	No	One	Container	N/A	The intermediate consignee is the person or company in the importing country that makes final delivery to the ultimate consignee.	Applicable for SED form only.
CompanyName	/FreightShipRequest/Shipment/Documents/InternationalForms/Contacts/IntermediateConsignee/CompanyName	Yes*	One	String	1..35	Company Name or the Individual name of the Intermediate consignee.	Applicable for SED form only.
Address	/FreightShipRequest/Shipment/Documents/InternationalForms/Contacts/IntermediateConsignee/Address	Yes*	One	Container	N/A	Address information of the Intermediate Consignee.	Applicable for SED form only.
AddressLine	/FreightShipRequest/Shipment/Documents/InternationalForms/Contacts/IntermediateConsignee/Address/AddressLine	Yes*	Three	String	1..35	Address line of the Intermediate Consignee.	Max Occurrence must be 3
City	/FreightShipRequest/Shipment/Documents/InternationalForms/Contacts/IntermediateConsignee/Address/City	Yes*	One	String	1..35	City of the Intermediate Consignee.	Applicable for SED form only.

Name	XPath	Required	Max Allowed	Type	Length	Description	Validation Rules
StateProvinceCode	/FreightShipRequest/Shipment/Documents/InternationalForms/Contacts/IntermediateConsignee/Address/StateProvinceCode	Cond	One	String	1..5	State of the Intermediate Consignee.	Applicable for SED form only. Required for certain countries.
Town	/FreightShipRequest/Shipment/Documents/InternationalForms/Contacts/IntermediateConsignee/Address/Town	No	One	String	1..30	Town of the Intermediate consignee	
PostalCode	/FreightShipRequest/Shipment/Documents/InternationalForms/Contacts/IntermediateConsignee/Address/PostalCode	Cond	One	String	1..9	Postal code of the Intermediate Consignee.	Applicable for SED form only. Required for certain countries. The length of the postal code depends on the country code.
CountryCode	/FreightShipRequest/Shipment/Documents/InternationalForms/Contacts/IntermediateConsignee/Address/CountryCode	Yes*	One	String	2	Country code of the Intermediate Consignee.	Applicable for SED form only.
Producer	/FreightShipRequest/Shipment/Documents/InternationalForms/Contacts/Producer	Cond	One	Container	N/A	Information of the producer. The NAFTA Certificate of Origin must be completed, signed, and dated by the exporter. When the Certificate is completed by the producer for use by the exporter, it must be completed, signed, and dated by the producer. The date must be the date the Certificate was completed and signed.	Applies to NAFTA CO. Required for NAFTA CO forms

Name	XPath	Required	Max Allowed	Type	Length	Description	Validation Rules
Option	/FreightShipRequest/Shipment/Documents/InternationalForms/Contacts/Producer/Option	No	One	String	2	The text associated with the code will be printed in the producer section instead of producer contact information. Use attached List if more than one producers good is included on the Certificate, attach a list of additional producers, including the legal name, address (including country), and legal tax identification number, cross-referenced to the goods described in the Description of Goods field.	Applies to NAFTA CO. Possible Values are: 01: AVAILABLE TO CUSTOMS UPON REQUEST; 02: SAME AS EXPORTER; 03: ATTACHED LIST
CompanyName	/FreightShipRequest/Shipment/Documents/InternationalForms/Contacts/Producer/CompanyName	Cond	One	String	1..35	Company Name or the Individual name of the Producer.	Applies to NAFTA CO. Only applicable when producer option is empty or not present. Conditionally required for: NAFTA CO, when Producer option is not specified.
TaxIdentificationNumber	/FreightShipRequest/Shipment/Documents/InternationalForms/Contacts/Producer/TaxIdentificationNumber	No	One	String	1..15	Tax ID of the Producer.	Applies to NAFTA CO. Only applicable when producer option is empty or not present
Address	/FreightShipRequest/Shipment/Documents/InternationalForms/Contacts/Producer/Address	Cond	One	Container	N/A	Address information of the Producer.	Applies to NAFTA CO. Only applicable if producer option is empty or not present. Conditionally required for: NAFTA CO, when Producer option is not specified.
AddressLine	/FreightShipRequest/Shipment/Documents/InternationalForms/Contacts/Producer/Address/AddressLine	Yes*	One	String	1..35	Address line of the Producer.	Max Occurrence must be 3
City	/FreightShipRequest/Shipment/Documents/InternationalForms/Contacts/Producer/Address/City	Yes*	One	String	1..35	City of the Producer.	Applies to NAFTA CO. Conditionally required for: NAFTA CO, when Producer option is not specified.

Name	XPath	Required	Max Allowed	Type	Length	Description	Validation Rules
StateProvinceCode	/FreightShipRequest/Shipment/Documents/InternationalForms/Contacts/Producer/Address/StateProvinceCode	Cond	One	String	1..5	State of the Producer.	Applies to NAFTA CO. Required for certain countries
Town	/FreightShipRequest/Shipment/Documents/InternationalForms/Contacts/Producer/Address/Town	No	One	String	1..30	Town of the Producer	
PostalCode	/FreightShipRequest/Shipment/Documents/InternationalForms/Contacts/Producer/Address/PostalCode	Cond	One	String	1..9	Postal code of the Producer.	Applies to NAFTA CO. Required for certain countries. The length of the postal code depends on the country code.
CountryCode	/FreightShipRequest/Shipment/Documents/InternationalForms/Contacts/Producer/Address/CountryCode	Yes*	One	String	2	Country code of the Producer.	Applies to NAFTA CO
AttentionName	/FreightShipRequest/Shipment/Documents/InternationalForms/Contacts/Producer/AttentionName	No	One	String	1..35	The contact name of the Producer	
Phone	/FreightShipRequest/Shipment/Documents/InternationalForms/Contacts/Producer/Phone	No	One	Container		Phone container	
Number	/FreightShipRequest/Shipment/Documents/InternationalForms/Contacts/Producer/Phone/Number	Yes	One	String	1..15	Phone Number of the Producer.	

Name	XPath	Required	Max Allowed	Type	Length	Description	Validation Rules
Extension	/FreightShipRequest/Shipment/Documents/InternationalForms/Contacts/Producer/Phone/Extension	No	One	String	1..4	Phone Extension of the Producer.	
EEmailAddress	/FreightShipRequest/Shipment/Documents/InternationalForms/Contacts/Producer/EEmailAddress	No	One	String	1..50	Email address of the Producer.	
SoldTo	/FreightShipRequest/Shipment/Documents/InternationalForms/Contacts/SoldTo	No	One	Container	N/A	SoldTo Container.	
Name	/FreightShipRequest/Shipment/Documents/InternationalForms/Contacts/SoldTo/Name	Yes	One	String	1..35	The Sold To Company Name	
AttentionName	/FreightShipRequest/Shipment/Documents/InternationalForms/Contacts/SoldTo/AttentionName	Yes	One	String	1..35	The Sold To Attention Name	
TaxIdentificationNumber	/FreightShipRequest/Shipment/Documents/InternationalForms/Contacts/SoldTo/TaxIdentificationNumber	No	One	String	1..15	The Sold To Company's Tax Identifier	
Phone	/FreightShipRequest/Shipment/Documents/InternationalForms/Contacts/SoldTo/Phone	No	One	Container	N/A	Phone Container	



Name	XPath	Required	Max Allowed	Type	Length	Description	Validation Rules
Number	/FreightShipRequest/Shipment/Documents/InternationalForms/Contacts/SoldTo/Phone/Number	Yes	One	String	1..15	The Sold To Phone Number	
Extension	/FreightShipRequest/Shipment/Documents/InternationalForms/Contacts/SoldTo/Phone/Extension	No	One	String	1..4	The Sold To Phone Extension	
Option	/FreightShipRequest/Shipment/Documents/InternationalForms/Contacts/SoldTo/Option	No	One	String	2	The text associated with the code will be printed in the sold to section of the NAFTA CO form. The values indicate the following 01 - Unknown 02 - Various	Applies to NAFTA CO form. Possible Values are 01 and 02
Address	/FreightShipRequest/Shipment/Documents/InternationalForms/Contacts/SoldTo/Address	Yes*	One	Container	N/A	Address Container.	
AddressLine	/FreightShipRequest/Shipment/Documents/InternationalForms/Contacts/SoldTo/Address/AddressLine	Yes	Three	String	35	SoldTo location's street address.	Max Occurrence must be 3
City	/FreightShipRequest/Shipment/Documents/InternationalForms/Contacts/SoldTo/Address/City	Yes	One	String	30	SoldTo location's city.	
StateProvinceCode	/FreightShipRequest/Shipment/Documents/InternationalForms/Contacts/SoldTo/Address/StateProvinceCode	Cond	One	String	5	SoldTo location's state or province code.	Required for certain countries.

Name	XPath	Required	Max Allowed	Type	Length	Description	Validation Rules
Town	/FreightShipRequest/Shipment/Documents/InternationalForms/Contacts/SoldTo/Address/Town	No	One	String		SoldTo location's town code.	
PostalCode	/FreightShipRequest/Shipment/Documents/InternationalForms/Contacts/SoldTo/Address/PostalCode	Cond	One	String	10	SoldTo location's postal code.	
CountryCode	/FreightShipRequest/Shipment/Documents/InternationalForms/Contacts/SoldTo/Address/CountryCode	Yes	One	String	2	SoldTo location's country code.	
EMailAddress	/FreightShipRequest/Shipment/Documents/InternationalForms/Contacts/SoldTo/EMailAddress	No	One	String	1..50	Sold To email address.	
Product	/FreightShipRequest/Shipment/Documents/InternationalForms/Product	Yes*	Fifty	Container	N/A	Contains the commodity/ product information	Applies to SED, Invoice, Partial Invoice, CO and NAFTA CO. When any International form is requested Product must be present at least once but no more than 50. Note: For Partial Invoice this container is optional.
Description	/FreightShipRequest/Shipment/Documents/InternationalForms/Product/Description	Yes*	One	String	1..35	Description of the product.	Applies to all International Forms. Optional for Partial Invoice. Must be present at least once and can occur for a maximum of 3 times

Name	XPath	Required	Max Allowed	Type	Length	Description	Validation Rules
Unit	/FreightShipRequest/Shipment/Documents/InternationalForms/Product/Unit	Cond	One	Container	N/A	Container tag for the unit's information of each product. (also called as commodity)	Required for Invoice forms and optional for Partial Invoice.
Number	/FreightShipRequest/Shipment/Documents/InternationalForms/Product/Unit/Number	Yes*	One	String	1..7	Total quantity of each commodity to be shipped, measured in the units specified in the Unit of Measure field	Required for Invoice forms and optional for Partial Invoice. Must be numeric. Valid characters are 0-9.
UnitOfMeasurement	/FreightShipRequest/Shipment/Documents/InternationalForms/Product/Unit/UnitOfMeasurement	Yes*	One	Container	N/A	Container tag for the Unit of measurement for the commodity.	Required for Invoice forms and optional for Partial Invoice.
Code	/FreightShipRequest/Shipment/Documents/InternationalForms/Product/Unit/UnitOfMeasurement/Code	Yes*	One	String	1..3	Code for the Unit of measurement of the commodity units.	Required for Invoice forms and optional for Partial Invoice. Valid entries are: BA = Barrel, BE = Bundle, BG = Bag, BH = Bunch, BOX = Box, BT = Bolt, BU = Butt, CI = Canister, CM = Centimeter, CON = Container, CR = Crate, CS = Case, CT = Carton, CY = Cylinder, DOZ = Dozen, EA = Each, EN = Envelope, FT = Feet, KG = Kilogram, KGS = Kilograms, LB = Pound, LBS = Pounds, L = Liter, M = Meter, NMB = Number, PA = Packet, PAL = Pallet, PC = Piece, PCS = Pieces, PF = Proof Liters, PKG = Package, PR = Pair, PRS = Pairs, RL = Roll, SET = Set, SME = Square Meters, SYD = Square Yards, TU = Tube, YD = Yard, OTH = Other.

Name	XPath	Required	Max Allowed	Type	Length	Description	Validation Rules
Description	/FreightShipRequest/Shipment/Documents/InternationalForms/Product/Unit/UnitOfMeasurement/Description	Cond	One	String	1..3	The Unit of Measure if OTH (Other) is entered as the UnitOfMeasurement code.	Applies to Invoice and Partial Invoice forms. Conditionally Required for the Invoice and Partial Invoice form if OTH is entered as the units UnitOfMeasurement code
Value	/FreightShipRequest/Shipment/Documents/InternationalForms/Product/Unit/Value	Yes*	One	String	1..12	Monetary amount used to specify the worth or price of the commodity. Amount should be greater than zero	Applies to Invoice and Partial Invoice form. Required for Invoice forms and optional for Partial Invoice. Amount should be greater than zero. Valid characters are 0-9 and. (Decimal point). Limit to 6 digits after the decimal. The maximum length of the field is 12 including. and can hold up to 6 decimal places.(#####.#####,#####.#####,#####.####,#####.###,#####.##,#####.##,#####)The value of this product and the other products should be such that the invoice line total which is the sum of ( number*values) of all products should not exceed 9999999999999999.99

Name	XPath	Required	Max Allowed	Type	Length	Description	Validation Rules
CommodityCode	/FreightShipRequest/Shipment/Documents/InternationalForms/Product/CommodityCode	Cond	One	String	1..15	6-to-15-alphanumeric commodity code. Customs uses this code to determine what duties should be assessed on the commodity.	Applies to Invoice, Partial Invoice and NAFTA CO. Required for NAFTA CO and optional for Partial Invoice. Should be at least 6 alphanumeric. For NAFTA CO: For each good described in Description of Goods field, identify the H.S. tariff classification to six digits. If the good is subject to a specific rule of origin in Annex 401 that requires eight digits, identify to eight digits, using the H.S. tariff classification of the country into whose territory the good is imported.
PartNumber	/FreightShipRequest/Shipment/Documents/InternationalForms/Product/PartNumber	No	One	String	1..15	The part number or reference number for the product contained in the invoice line, as indicated on the customs invoice.	Applies to Invoice and Partial Invoice. Required for Invoice forms and optional for Partial Invoice.

Name	XPath	Required	Max Allowed	Type	Length	Description	Validation Rules
OriginCountryCode	/FreightShipRequest/Shipment/Documents/InternationalForms/Product/OriginCountryCode	Cond	One	String	2	The country in which the good was manufactured, produced, or grown. For detailed information on country of origin, certificate of origin, rules of origin, and any related matters, please refer to the U.S. Customs and Border Protection Web site at <a href="http://www.customs.gov">www.customs.gov</a> or contact your country's Customs authority.	Applies to Invoice, Partial Invoice, CO and NAFTA CO. Required for Invoice and CO forms. Optional for Partial Invoice. Conditionally required for NAFTA CO if JointProductionIndicator is not present. Do not put in developers guide: For NAFTA CO, identify the name of the country (MX or US for agricultural and textile goods exported to Canada; US or CA for all goods exported to Mexico; or CA or MX for all goods exported to the United States) to which the preferential rate of customs duty applies, as set out in Annex 302.2, in accordance with the Marking Rules or in each party's schedule of tariff elimination. For all other originating goods exported to Canada, indicate appropriately MX or US if the goods originate in that NAFTA country, within the meaning of the NAFTA Rules of Origin Regulations, and any subsequent processing in the other NAFTA country does not increase the transaction value of the goods by more than seven percent; otherwise use the JointProductionIndicator for joint production.

Name	XPath	Required	Max Allowed	Type	Length	Description	Validation Rules
JointProductionIndicator	/FreightShipRequest/Shipment/Documents/InternationalForms/Product/JointProductionIndicator	No	One	EMPTY	N/A	If present, JNT will be used as the origin of country code on the NAFTA form and the Product/OriginCountryCode tag will be ignored.	Applies to NAFTA CO only
NetCostCode	/FreightShipRequest/Shipment/Documents/InternationalForms/Product/NetCostCode	Cond	One	String	2	For each good described in the Description of Goods field, where the good is subject to a regional value content (RVC) requirement, indicate NC if the RVC is calculated according to the net cost method; otherwise, indicate NO.	Applies to NAFTA CO only. Required for NAFTA CO. Possible Values: NC, NO
NetCostDateRange	/FreightShipRequest/Shipment/Documents/InternationalForms/Product/NetCostDateRange	No	One	Container	N/A	Date Range for regional value content (RVC)	Applies to NAFTA CO only.
BeginDate	/FreightShipRequest/Shipment/Documents/InternationalForms/Product/NetCostDateRange/BeginDate	Yes*	One	String	8	If the RVC is calculated over a period of time, it should be identified by the begin date (yyyyMMdd) of that period. (Reference: Articles 402.1, 402.5).	Applies to NAFTA CO only. Format is yyyyMMdd
EndDate	/FreightShipRequest/Shipment/Documents/InternationalForms/Product/NetCostDateRange/EndDate	Yes*	One	String	8	If the RVC is calculated over a period of time, it should be identified by the End date (yyyyMMdd) of that period. (Reference: Articles 402.1, 402.5).	Applies to NAFTA CO only. Format is yyyyMMdd
PreferenceCriteria	/FreightShipRequest/Shipment/Documents/InternationalForms/Product/PreferenceCriteria	Cond	One	String	1	Indicates the criterion (A through F) for each good described in the Description of Goods field if applicable.	Applicable for NAFTA CO and is required. Possible Values: ABCDEF. See Table IF1 for description of these values.

Name	XPath	Required	Max Allowed	Type	Length	Description	Validation Rules
ProducerInfo	/FreightShipRequest/Shipment/Documents/InternationalForms/Product/ProducerInfo	Cond	One	String	3 Or 5	Indicate the following: Yes - If shipper is the producer of the good. If not, state 02, 03, and 04 depending on whether this certificate was based upon: No[1] - Knowledge of whether the good qualifies as an originating good. No[2] - Reliance on the producers written representation (other than a Certificate of Origin) that the good qualifies as an originating good. No[3] - A completed and signed Certificate for the good voluntarily provided to the exporter by the producer.	Applicable for NAFTA CO and is required. Possible Values: Yes, No. [1]No[2]No[3]
MarksAndNumbers	/FreightShipRequest/Shipment/Documents/InternationalForms/Product/MarksAndNumbers	No	One	String	1..35	Any special marks, codes, and numbers that may appear on package	Applies to CO Only
NumberOfPackagesPerCommodity	/FreightShipRequest/Shipment/Documents/InternationalForms/Product/NumberOfPackagesPerCommodity	Cond	One	String	1..3	The total number of packages, cartons, or containers for the commodity	Applicable for CO and is required. Should be numeric. Valid characters are 0 -9.
ProductWeight	/FreightShipRequest/Shipment/Documents/InternationalForms/Product/ProductWeight	Cond	One	Container	N/A	The shipping weight, including containers, for each commodity with a separate Harmonized Tariff Code / Schedule B Number. This weight does not include carrier equipment.	Applies to CO and SED forms only. Required for CO and SED forms.
UnitOfMeasurement	/FreightShipRequest/Shipment/Documents/InternationalForms/Product/ProductWeight/UnitOfMeasurement	Yes*	One	Container	N/A	Container tag for the Unit of Measurement of weight	Applies to CO and SED forms only
Code	/FreightShipRequest/Shipment/Documents/InternationalForms/Product/ProductWeight/UnitOfMeasurement/Code	Yes*	One	String	3	Code for unit of Measurement of weight	Applies to CO and SED forms only. Possible values :KGS LBS



Name	XPath	Required	Max Allowed	Type	Length	Description	Validation Rules
Description	/FreightShipRequest/Shipment/Documents/InternationalForms/Product/ProductWeight/UnitOfMeasurement/Description	No	One	String	1..20	Description of the Unit of Measure	
Weight	/FreightShipRequest/Shipment/Documents/InternationalForms/Product/ProductWeight/Weight	Yes*	One	String	1..5	Weight	Applies to CO and SED forms only. Valid characters are 0-9 and. (Decimal point). Limit to 1 digit after the decimal. The maximum length of the field is 5 including . and can hold up to 1 decimal place.
VehicleID	/FreightShipRequest/Shipment/Documents/InternationalForms/Product/VehicleID	No	One	String	1..25	Includes the following information for used self-propelled vehicles as defined in Customs regulations 19 CFR 192.1: The unique Vehicle Identification Number (VIN) in the proper format. Or The Product Identification Number (PIN) for those used self propelled vehicles for which there are no VINs. Or the Vehicle Title Number.	Applies to SED forms only
ScheduleB	/FreightShipRequest/Shipment/Documents/InternationalForms/Product/ScheduleB	Cond	One	Container	N/A	Container tag for the schedule B information of a commodity	Applies to SED forms only. Required for SED form
Number	/FreightShipRequest/Shipment/Documents/InternationalForms/Product/ScheduleB/Number	Yes*	One	String	10	A unique 10-digit commodity classification code for the item being exported. (To classify a commodity access the following Web page: <a href="http://www.census.gov/foreign-trade/schedules/b/#search">http://www.census.gov/foreign-trade/schedules/b/#search</a> ).	Applies to SED forms only. Has to be 10 characters.
Quantity	/FreightShipRequest/Shipment/Documents/InternationalForms/Product/ScheduleB/Quantity	Cond	One	String	1..10	The count of how many Schedule B units of the current good are in the shipment (SED only). For example, if the Schedule B unit of measure is dozens and eight dozen, is being shipped, indicate 8 in this field.	Applies to SED forms only. Conditionally required for SED forms if ScheduleB UnitOfMeasurement is not X. Should be Numeric. Valid characters are 0 -9.

Name	XPath	Required	Max Allowed	Type	Length	Description	Validation Rules
UnitOfMeasurement	/FreightShipRequest/Shipment/Documents/InternationalForms/Product/ScheduleB/UnitOfMeasurement	Yes*	One	Container	N/A	The unit of measure indicated on the Export License.	Applies to SED forms only.
Code	/FreightShipRequest/Shipment/Documents/InternationalForms/Product/ScheduleB/UnitOfMeasurement/Code	Yes*	One	String	1..3	The unit of measure indicated on the Export License. Enter an X if there is no unit of measure in the Schedule B Unit field.	Applies to SED forms only. Required for the SED form. Possible Values: BBL: Barrels, CAR: Carat, CKG: Content Kilogram, CM2: Square Centimeters, CTN: Content Ton, CUR: Curie, CYK: Clean Yield Kilogram, DOZ: Dozen, DPC: Dozen Pieces, DPR: Dozen Pairs, FBM: Fiber Meter, GCN: Gross Containers, GM: Gram, GRS: Gross, HUN: Hundred, KG: Kilogram, KM3: 1,000 Cubic Meters, KTS: Kilogram Total Sugars, L: Liter, M: Meter, M2: Square Meters, M3: Cubic Meters, MC: Millicurie, NO: Number, PCS: Pieces, PFL: Proof Liter, PK: Pack, PRS: Pairs, RBA: Running Bales, SQ: Square, T: Ton, THS: 1,000, X: No Quantity required.
Description	/FreightShipRequest/Shipment/Documents/InternationalForms/Product/ScheduleB/UnitOfMeasurement/Description	No	One	String	1..20	Description of the Unit of Measure	

Name	XPath	Required	Max Allowed	Type	Length	Description	Validation Rules
ExportType	/FreightShipRequest/Shipment/Documents/InternationalForms/Product/ExportType	Cond	One	String	1	Code indicating Domestic: Exports that have been produced, manufactured, or grown in the United States or Puerto Rico. This includes imported merchandise which has been enhanced in value or changed from the form in which imported by further manufacture or processing in the United States or Puerto Rico. Foreign: Merchandise that has entered the United States and is being exported again in the same condition as when imported. ForeignMilitary: Exported merchandise that is sold under the foreign military sales program.	Applies to SED forms only. Required for SED form. Possible Values: D: Domestic F: Foreign M: Foreign Military
SEDTotalValue	/FreightShipRequest/Shipment/Documents/InternationalForms/Product/SEDTotalValue	Cond	One	String	1..15	The value of the S.E.D. commodity contained on the S.E.D. This amount will always be USD.	Applies to SED forms only. Required for SED form. Valid characters are 0-9 and .(Decimal point). Limit to 2 digit after the decimal. The maximum length of the field is 15 including . and can hold up to 2 decimal places. Note: This value is calculated based on the Product/Unit/Value and /Product/Unit/Number (Number of Units * Price per Unit). If the total value is incorrect it will be replaced by the actual calculated total value.
ExcludeFromForm	/FreightShipRequest/Shipment/Documents/InternationalForms/Product/ExcludeFromForm	No	One	Container	N/A	Container tag for determining whether or not to exclude product information from a particular form.	Air freight only. If this container is not present we assume that the DEFAULT is selected which is "none" and all products will appear on all forms.

Name	XPath	Required	Max Allowed	Type	Length	Description	Validation Rules
FormType	/FreightShipRequest/Shipment/Documents/InternationalForms/Product/ExcludeFromForm/FormType	Yes*	unbounded	String	2	Indicates the name of the International form requested to NOT have product information.	Air freight only. Possible Values are 04 – NAFTA CO. Please note that if this is used and you DO NOT have the corresponding form type requested this will be IGNORED.
InvoiceNumber	/FreightShipRequest/Shipment/Documents/InternationalForms/InvoiceNumber	No	One	String	1..35	Commercial Invoice number assigned by the exporter	Applies to Invoice and Partial Invoice forms only. Required for Invoice forms and optional for Partial Invoice.
InvoiceDate	/FreightShipRequest/Shipment/Documents/InternationalForms/InvoiceDate	Cond	One	String	8	Date when the Invoice is created. Ideally this is the same as the ship date.	Applies to Invoice and Partial Invoice forms only. Required for Invoice forms and optional for Partial Invoice. Required for Invoice form for forward shipments. For shipment with return service, the user input will be ignored, and the field will be blank on the invoice. Format is yyyyMMdd
PurchaseOrderNumber	/FreightShipRequest/Shipment/Documents/InternationalForms/PurchaseOrderNumber	No	One	String	1..35	The customers order reference number	Applies to Invoice and Partial Invoice forms only. Required for Invoice forms and optional for Partial Invoice.

Name	XPath	Required	Max Allowed	Type	Length	Description	Validation Rules
TermsOfShipment	/FreightShipRequest/Shipment/Documents/InternationalForms/TermsOfShipment	No	One	String	3	Indicates the rights to the seller from the buyer.	Applies to Invoice and Partial Invoice forms only. Required for Invoice forms and optional for Partial Invoice. Possible values are: CFR: Cost and Freight, CIF: Cost, Insurance and Freight, CIP: Carriage and Insurance Paid, CPT: Carriage Paid To, DAF: Delivered at Frontier, DDP: Delivery Duty Paid, DDU: Delivery Duty Unpaid, DEQ: Delivered Ex Quay, DES: Delivered Ex Ship, EXW: Ex Works, FAS: Free Alongside Ship, FCA: Free Carrier, FOB: Free On Board.
ReasonForExport	/FreightShipRequest/Shipment/Documents/InternationalForms/ReasonForExport	Cond	One	String	1..20	Reason to export the current international shipment. Possible values: SALE, GIFT, SAMPLE, RETURN, REPAIR, INTERCOMPANYDATA, Any other reason	Applies to Invoice and Partial Invoice forms only. Required for Invoice forms and Optional for Partial Invoice. No validation
Comments	/FreightShipRequest/Shipment/Documents/InternationalForms/Comments	No	One	String	1..150	Any extra information about the current shipment	Applies to Invoice and Partial Invoice forms only. Required for Invoice forms and optional for Partial Invoice.

Name	XPath	Required	Max Allowed	Type	Length	Description	Validation Rules
DeclarationStatement	/FreightShipRequest/Shipment/Documents/InternationalForms/DeclarationStatement	No	One	String	1..550	This is the legal explanation, used by Customs, for the delivering of this shipment. It must be identical to the set of declarations actually used by Customs. Examples of declarations that might be entered in this field are: I hereby certify that the goods covered by this shipment qualify as originating goods for purposes of preferential tariff treatment under the NAFTA. I hereby certify that the information on this invoice is true and correct and the contents and value of this shipment is as stated above. EEA statement: The exporter of the products covered by this document declares that except where otherwise clearly indicated these products are of EEA preferential origin.	Applies to Invoice and Partial Invoice forms only. On the invoice for return shipment, the verbiage is as follows (user input is ignored): The exporter of the products covered by this document declares that except where otherwise clearly indicated these products are of EEA preferential origin
Discount	/FreightShipRequest/Shipment/Documents/InternationalForms/Discount	No	One	Container	N/A	Container tag that holds the discount.	Applies to Invoice and Partial Invoice forms only.
MonetaryValue	/FreightShipRequest/Shipment/Documents/InternationalForms/Discount/MonetaryValue	Yes*	One	String	15	The discount to be subtracted from the sum of the total value on the invoice.	Applies to Invoice and Partial Invoice forms only. Required for Invoice forms and optional for Partial Invoice. Valid characters are 0-9 and. (Decimal point). Limit to 2 digit after the decimal. The maximum length of the field is 15 including. and can hold up to 2 decimal places. This value should be greater than or equal to zero or less than or equal to the value of all goods listed on the invoice.

Name	XPath	Required	Max Allowed	Type	Length	Description	Validation Rules
FreightCharges	/FreightShipRequest/Shipment/Documents/InternationalForms/FreightCharges	No	One	Container	N/A	Container tag that holds the Freight Charges	Applies to Invoice and Partial Invoice forms only.
MonetaryValue	/FreightShipRequest/Shipment/Documents/InternationalForms/FreightCharges/MonetaryValue	Yes*	One	String	0..15	Cost to transport the shipment	Applies to Invoice and Partial Invoice forms only. Required for Invoice forms and optional for Partial Invoice. Valid characters are 0-9 and. (Decimal point). Limit to 2 digit after the decimal. The maximum length of the field is 15 including. and can hold up to 2 decimal places.
InsuranceCharges	/FreightShipRequest/Shipment/Documents/InternationalForms/InsuranceCharges	No	One	Container	N/A	Container tag that holds the Insurance Charges	Applies to Invoice and Partial Invoice forms only.
MonetaryValue	/FreightShipRequest/Shipment/Documents/InternationalForms/InsuranceCharges/MonetaryValue	Yes*	One	String	0..15	The amount the shipper or receiver pays to cover the cost of replacing the shipment if it is lost or damaged	Applies to Invoice and Partial Invoice forms only. Required for Invoice forms and optional for Partial Invoice. Valid characters are 0-9 and. (Decimal point). Limit to 2 digit after the decimal. The maximum length of the field is 15 including. and can hold up to 2 decimal places.
OtherCharges	/FreightShipRequest/Shipment/Documents/InternationalForms/OtherCharges	No	One	Container	N/A	Container tag that holds the information of amount that covers additional charges not already listed on the invoice	Applies to Invoice and Partial Invoice forms only.

Name	XPath	Required	Max Allowed	Type	Length	Description	Validation Rules
MonetaryValue	/FreightShipRequest/Shipment/Documents/InternationalForms/OtherCharges/MonetaryValue	Yes*	One	String	0..15	The Monetary value of Other Charges	Applies to Invoice and Partial Invoice forms only. Required for Invoice forms and optional for Partial Invoice. Valid characters are 0-9 and. (Decimal point). Limit to 2 digit after the decimal. The maximum length of the field is 15 including. and can hold up to 2 decimal places.
Description	/FreightShipRequest/Shipment/Documents/InternationalForms/OtherCharges/Description	Yes*	One	String	1..10	Description of what the other charges are for.	Applies to Invoice and Partial Invoice forms only. Required for Complete Invoice and Optional for Partial Invoice forms.
CurrencyCode	/FreightShipRequest/Shipment/Documents/InternationalForms/CurrencyCode	Cond	One	String	3	Currency code for all the monetary values of the Invoice form	Applies to Invoice and Partial Invoice forms only.
BlanketPeriod	/FreightShipRequest/Shipment/Documents/InternationalForms/BlanketPeriod	Cond	One	Container	N/A	This field should be entered if the NAFTA Certificate covers multiple shipments of identical goods as described in the Description of Goods field that are imported into a NAFTA country for a specified period of up to one year (the blanket period). The importation of a good for which preferential treatment is claimed based on this certificate must occur between these dates.	Applies to NAFTA CO form only. This is not valid for a paperless shipment.
BeginDate	/FreightShipRequest/Shipment/Documents/InternationalForms/BlanketPeriod/BeginDate	Yes*	One	String	8	Begin date of the blanket period. It is the date upon which the Certificate becomes applicable to the good covered by the blanket Certificate (it may be prior to the date of signing this Certificate).	Applies to NAFTA CO form only. Format is yyyyMMdd. This is not valid for a paperless shipment.



Name	XPath	Required	Max Allowed	Type	Length	Description	Validation Rules
EndDate	/FreightShipRequest/Shipment/Documents/InternationalForms/BlanketPeriod/EndDate	Yes*	One	String	8	End Date of the blanket period. It is the date upon which the blanket period expires.	Applies to NAFTA CO form only. Format is yyyyMMdd. This is not valid for a paperless shipment.
ExportDate	/FreightShipRequest/Shipment/Documents/InternationalForms/ExportDate	Cond	One	String	8	The date the goods will be exiting the country	Applies to CO and SED forms only. Required for CO and SED forms. Format is yyyyMMdd
ExportingCarrier	/FreightShipRequest/Shipment/Documents/InternationalForms/ExportingCarrier	Cond	One	String	1..35	The name of the carrier that is exporting the shipment. The vessels flag number should also be entered, if the carrier is a vessel.	Applies to CO and SED forms only. Required for CO and SED forms.
CarrierID	/FreightShipRequest/Shipment/Documents/InternationalForms/CarrierID	No	One	String	1..17	The four-character Standard Carrier Alpha Code (SCAC) for vessel, rail, and truck shipments. For air shipment, enter the two or three character International Air Transport Association (IATA) code	Applies to SED forms only. No Validations.
InBondCode	/FreightShipRequest/Shipment/Documents/InternationalForms/InBondCode	Cond	One	String	2	The two-character In Bond Code	Applies to SED forms only. Required for SED forms. Valid values are: 70: Not in bond; 36: Warehouse withdrawal for IE; 37: Warehouse withdrawal for T and E; 62: T and E; 63: IE; 67: IE from a FTZ; 68: T and E from a FTZ
EntryNumber	/FreightShipRequest/Shipment/Documents/InternationalForms/EntryNumber	Cond	One	String	1..25	The Import Entry Number when the export transaction is used as proof of export for import transactions (examples: In Bond, Temporary Import Bond or Drawbacks)	Applies to SED forms only. Conditionally Required for SED forms when In bond code value is other than 70(Not In Bond)

Name	XPath	Required	Max Allowed	Type	Length	Description	Validation Rules
PointOfOrigin	/FreightShipRequest/Shipment/Documents/InternationalForms/PointOfOrigin	Cond	One	String	1..5	Contains one of the following: The two-digit U.S. Postal Service abbreviation for the state from which the goods were shipped to the port of export. The state that is the source for the good with the highest value. The state of consolidation. The Foreign Trade Zone number of the zone from where the exports are leaving. If the goods were shipped from Puerto Rico, enter PR.	Applies to SED forms only. Required for SED
ModeOfTransport	/FreightShipRequest/Shipment/Documents/InternationalForms/ModeOfTransport	Cond	One	String	1..35	Mode of transport by which the goods are exported. Possible values: Air; AirContainerized; Auto; FixedTransportInstallations; Mail; PassengerHandcarried; Pedestrian; Rail; RailContainerized; RoadOther; SeaBarge; SeaContainerized; SeaNoncontainerized; Truck; TruckContainerized	Applies to SED forms only. Required for SED. Only allowed values can be entered. Only 10 Characters can appear on the form. Anything greater than 10 characters will be truncated on the form.
PortOfExport	/FreightShipRequest/Shipment/Documents/InternationalForms/PortOfExport	No	One	String	1..35	Should be one of the following: -Overland: The U.S. Customs port where the carrier crosses the U.S. border. -Vessel and Air: The U.S. Customs port where the goods are loaded on the carrier to be exported from the U.S. -Postal: The U.S. Postal Office from where the goods are mailed	Applies to SED forms only. No validation.
PortOfUnloading	/FreightShipRequest/Shipment/Documents/InternationalForms/PortOfUnloading	No	One	String	1..35	The country and the port where the goods will be unloaded from the exporting carrier. For vessel and air shipments only.	Applies to SED forms only. No validation.
LoadingPier	/FreightShipRequest/Shipment/Documents/InternationalForms/LoadingPier	No	One	String	1..35	Pier where goods are loaded. For vessel shipments only	Applies to SED forms only. No validation.

Name	XPath	Required	Max Allowed	Type	Length	Description	Validation Rules
PartiesToTransaction	/FreightShipRequest/Shipment/Documents/InternationalForms/PartiesToTransaction	Cond	One	String	1	Information about parties to transaction. Use Related, if the parties to the transaction are related. A related party is an export from a U.S. businessperson or business to a foreign business or from a U.S. business to a foreign person or business where the person has at least 10 percent of the voting shares of the business during the fiscal year. If unincorporated, then an equivalent interest in the business.	Applies to SED forms only. Valid values are: R - Related N - Non related
RoutedExportTransactionIndicator	/FreightShipRequest/Shipment/Documents/InternationalForms/RoutedExportTransactionIndicator	No	One	EMPTY	N/A	If Present, indicates that it is a routed export transaction. A routed export transaction is one, where the foreign principal party in interest authorizes a U.S. forwarding (or other) agent to export the merchandise outside the U.S.	Applies to SED forms only
ContainerizedIndicator	/FreightShipRequest/Shipment/Documents/InternationalForms/ContainerizedIndicator	No	One	EMPTY	N/A	If present indicates that the goods are containerized. This applies to vessel shipments only	Applies to SED forms only
License	/FreightShipRequest/Shipment/Documents/InternationalForms/License	Cond	One	Container	N/A	Container for License information. If the product is not licensable, a valid license exception code needs to be entered. If shipping different products that are covered under different licenses or license exceptions, then separate SEDs must be created.	Applies to SED forms only. Required for SED forms.
Number	/FreightShipRequest/Shipment/Documents/InternationalForms/License/Number	Cond	One	String	1..35	The license number that authorizes ship product.	Applies to SED forms only. Either License number or License exception code should be present for SED form, both License number and License Exception code cannot be present for SED form.

Name	XPath	Required	Max Allowed	Type	Length	Description	Validation Rules
Date	/FreightShipRequest/Shipment/Documents/InternationalForms/License/Date	Cond	One	String	1..8	License Date	Applies to SED forms only. Conditionally required for SED forms if there is a license number. Only applicable when License Number is provided. Format yyyyMMdd

Name	XPath	Required	Max Allowed	Type	Length	Description	Validation Rules
ExceptionCode	/FreightShipRequest/Shipment/Documents/InternationalForms/License/ExceptionCode	Cond	One	String	1..4	License exception code. Possible values: AGR: Established for agricultural commodities to permit exports and re-exports to Cuba that is not specifically identified on the Commerce Control List (CCL) and is classified as EAR99. APR: Items for export or re-export not controlled for nuclear nonproliferation, missile technology or crime control. AVS: U.S. aircraft or foreign sojourn into foreign country. BAG: Individual or exporting carrier's crew member's baggage. CIV: National security items for civil end users. CTP: Computer and parts of. ENC: Encrypted software and hardware - financial institutions. GBS: Export or re-export of Country Group B; controlled for national security reasons. GFT: Gift shipments; packages to individuals, religious, charitable or education institutions, donations of basic needs. GOV: Government shipments, covers shipments for U.S. government agencies, personnel or of cooperating foreign governments. KMI: Encrypted software and hardware. LVS: Value of shipments limited. NLR: No license required. RPL: Servicing and replacement of parts and equipment, one for one replacement parts service or replacement of equipment. TMP: Temporary exports, export and re-export of items temporary in U.S., export and re-export of beta test software. TSPA: Software or technology outside the scope of export regulations. TSR: Technology and software, national security reason, Country Group B. TSU: A Technology and software shipment, of basic requirements, data supporting prospective or actual bids, offers to sell, lease or supply an item. Software update for fixing programs, mass marketed software	Applies to SED forms only. Either License number or License exception code should be present for SED form, both License number and License Exception code cannot be present for SED form. Validated for possible values

Name	XPath	Required	Max Allowed	Type	Length	Description	Validation Rules
ECCNNumber	/FreightShipRequest/Shipment/Documents/InternationalForms/ECCNNumber	Cond	One	String	8	Export Control Classification Number. This number identifies categories, product groups, strategic level of control, and country groups. Some products have an ECCN number.	Applies to SED forms only. ECCN is required one of the following License Exception Codes is entered: CIV CTP ENC KMI LVS
OverridePaperlessIndicator	/FreightShipRequest/Shipment/Documents/InternationalForms/OverridePaperlessIndicator	No	One	String	0	Presence of the indicator means user wants to override UPS paperless functionality if their Account is paperless enabled.	This indicator should be set when the shipper intends to override UPS paperless functionality if their Account is paperless enabled.
ITNNumber	/FreightShipRequest/Shipment/ITNNumber	No	One	String	15	AES ITN Number	Standard AES ITN Number format
TaxID	/FreightShipRequest/Shipment/TaxID	No	One	Container	N/A	Tax ID of the customer doing the AES filing	
Type	/FreightShipRequest/Shipment/TaxID/Type	Yes*	One	Container	N/A	Type of Tax ID submitted.	
Code	/FreightShipRequest/Shipment/TaxID/Type/Code	Yes*	One	String	6	Description for the type of Tax ID submitted	EIN or SSN or DUNS or OTHER
Description	/FreightShipRequest/Shipment/TaxID/Type/Description	No	One	String	35	Text description of the Tax Id submitted.	

Name	XPath	Required	Max Allowed	Type	Length	Description	Validation Rules
Number	/FreightShipRequest/Shipment/TaxID/Number	Yes*	One	String	15	TaxId of the customer doing the AES Filing.	
MovementReferenceNumber	/FreightShipRequest/Shipment/MovementReferenceNumber	No	One	String	18	EU AES number that will be required for all exports out of the EU over 1000.00 EU in value.	
EICNumberAndStatement	/FreightShipRequest/Shipment/EICNumberAndStatement	No	One	String	50	EIC Number and the AES Statement	
TimeInTransitIndicator	/FreightShipRequest/Shipment/TimeInTransitIndicator	No	One	String	0	Presence of the tag indicates Time in Transit information is requested and will be returned if available.	Ground freight only.
FreightShipResponse	/FreightShipResponse	Yes	One	Container	N/A		
Response	/FreightShipResponse/Response	Yes	One	Container	N/A	Response Container.	
ResponseStatus	/FreightShipResponse/Response/ResponseStatus	Yes	One	Container	N/A	Response Status Container.	

Name	XPath	Required	Max Allowed	Type	Length	Description	Validation Rules
Code	/FreightShipResponse/Response/ResponseStatus/Code	Yes	One	String	1	Identifies the success or failure of the transaction. 1 = Successful	
Description	/FreightShipResponse/Response/ResponseStatus/Description	Yes	One	String	1..35	Describes Response Status Code. Returns text of Success.	
Alert	/FreightShipResponse/Response/Alert	No	Many	Container	N/A	Alert Container. There can be zero to many alert containers with code and description.	
Code	/FreightShipResponse/Response/Alert/Code	Yes*	One	String	1..10	Warning code returned by the system.	
Description	/FreightShipResponse/Response/Alert/Description	Yes*	One	String	1..150	Warning messages returned by the system.	
TransactionReference	/FreightShipResponse/Response/TransactionReference	No	One	Container	N/A	Transaction Reference Container.	
CustomerContext	/FreightShipResponse/Response/TransactionReference/CustomerContext	No	One	String	1..512	The CustomerContext Information which will be echoed during response.	



Name	XPath	Required	Max Allowed	Type	Length	Description	Validation Rules
TransactionIdentifier	/FreightShipResponse/Response/TransactionReference/TransactionIdentifier	No	One	String	35	The Unique TransactionIdentifier Information for that transaction. This will be present only if requested in the request.	
ShipmentResults	/FreightShipResponse/ShipmentResults	Yes	One	Container	N/A	ShipmentResults Container.	
AirFreightPickupRequest	/FreightShipResponse/ShipmentResults/AirFreightPickupRequest	Cond	One	Container	N/A	Status of the Air Freight Pickup Request	Air freight only
Status	/FreightShipResponse/ShipmentResults/AirFreightPickupRequest/Status	Yes	One	Container	N/A	Status of the Air Freight Pickup Request	Air freight only.
Code	/FreightShipResponse/ShipmentResults/AirFreightPickupRequest/Status/Code	Yes	One	String	2	Code representing the status of the Air Freight Pickup Request	Air freight only. Valid values: COMPLETE; PENDING AUTH; HA; COMPLETE HA; PENDING_AUTH
Description	/FreightShipResponse/ShipmentResults/AirFreightPickupRequest/Status/Description	Yes	One	String	35	Description representing the status of the Air Freight Pickup Request	Air freight only.

Name	XPath	Required	Max Allowed	Type	Length	Description	Validation Rules
PreAuthorizationReason	/FreightShipResponse/ShipmentResults/AirFreightPickupRequest/PreAuthorizationReason	Cond	unbounded	Container	N/A	Container for a Pre authorization Reason	Air freight only. For shipments requiring Pre Authorization
Code	/FreightShipResponse/ShipmentResults/AirFreightPickupRequest/PreAuthorizationReason/Code	Yes	One	String	8	Code representing the Pre authorization Reason 6000204 6000205 6000206 6000208 6000212 6000213 6000214 6000232 6000233 6000234 6000235 6000242	Air freight only.
Description	/FreightShipResponse/ShipmentResults/AirFreightPickupRequest/PreAuthorizationReason/Description	Yes	One	String	35	Description representing the Pre authorization Reason: 6000204 = One pieces dimension exceeds an oversize limit; 6000205 = Total weight exceeds heavyweight limit. (Intl); 6000206 = Total weight exceeds heavyweight limit. (North America); 6000208 = Unknown Shipper; 6000212 = Intl Saturday Delivery accessorial requires pre-authorization; 6000213 = Limited lane capacity - shipment guarantee is affected; 6000214 = Declared Value exceeds high-value limit; 6000232 = International PRQ in a non-North American origin requires pre-authorization; 6000233 = Total Dimensional Weight exceeds Intl heavyweight limit; 6000234 = Total Dimensional Weight exceeds NA heavyweight limit; 6000235 = International shipment with Hazmat requires pre-authorization; 6000242 = The service code and lane pair selected requires pre-authorization	Air freight only.
ShipperNumber	/FreightShipResponse/ShipmentResults/ShipperNumber	Cond	One	String	9	Shipper 9 digit account number	Air freight only.

Name	XPath	Required	Max Allowed	Type	Length	Description	Validation Rules
CreationDate	/FreightShipResponse/ShipmentResults/CreationDate	Cond	One	String	8	Time and Date the Air Shipment is created. Part of the retrieval key for the Air Shipment. Format is YYYYMMDD	Air freight only.
CustomerServiceInformation	/FreightShipResponse/ShipmentResults/CustomerServiceInformation	No	One	String	N/A	Returns the customer service information which could be either a phone number or the URL.	Air freight only.
OriginServiceCenterCode	/FreightShipResponse/ShipmentResults/OriginServiceCenterCode	No	One	String	10	The Origin Service Center Code. For air freight, this code represents the Airport Code for the origin.	Air freight only.
DestinationServiceCenterCode	/FreightShipResponse/ShipmentResults/DestinationServiceCenterCode	No	One	String	6	The Airport Code for the destination.	Air freight only.
LabelServiceCode	/FreightShipResponse/ShipmentResults/LabelServiceCode	No	One	String	6	Service identifier for the label. Not necessarily the same as what was in the request.	Air freight only.
AirFreightModularID	/FreightShipResponse/ShipmentResults/AirFreightModularID	No	One	String	35	The modular id is a code printed on the air freight label, the SCS hub uses it to begin the sort process when the planes are unloaded	Air freight only.
PickupRequestConfirmationNumber	/FreightShipResponse/ShipmentResults/PickupRequestConfirmationNumber	No	One	String	35	Shipment pickup number.	

Name	XPath	Required	Max Allowed	Type	Length	Description	Validation Rules
DeliveryDate	/FreightShipResponse/ShipmentResults/DeliveryDate	No	One	String	8	Estimated date that the shipment will be delivered. Format is YYYYMMDD.	
ShipmentNumber	/FreightShipResponse/ShipmentResults/ShipmentNumber	No	One	String	9	The shipment Number assigned to the shipment.	
BOLID	/FreightShipResponse/ShipmentResults/BOLID	No	One	String	35	The retrieval key for the stored BOL.	
GuaranteedIndicator	/FreightShipResponse/ShipmentResults/GuaranteedIndicator	No	One	Container	0	This indicator indicates that the rate returned is guaranteed. Can only be returned if the billing option is prepaid.	
MinimumChargeAppliedIndicator	/FreightShipResponse/ShipmentResults/MinimumChargeAppliedIndicator	No	One	Container	0	This is an empty tag. The presence of the tag indicates the rate returned has a minimum charge applied to it. Can only be returned if the billing option is prepaid.	
Rate	/FreightShipResponse/ShipmentResults/Rate	No	unbounded	Container	N/A	Rate Container. Returned only if the billing option is prepaid.	
Type	/FreightShipResponse/ShipmentResults/Rate/Type	Yes	One	Container	N/A	Rate Type Container.	

Name	XPath	Required	Max Allowed	Type	Length	Description	Validation Rules
Code	/FreightShipResponse/ShipmentResults/Rate/Type/Code	Yes	One	String	10	The code associated with the rate charge. See Appendix for a list of values.	
Description	/FreightShipResponse/ShipmentResults/Rate/Type/Description	No	One	String	80	A text description of the code for the rate charge.	
Factor	/FreightShipResponse/ShipmentResults/Rate/Factor	Yes	One	Container	N/A	Factor Container.	
Value	/FreightShipResponse/ShipmentResults/Rate/Factor/Value	Yes	One	String	16.2	Contains value pertaining to rate type code. For e.g. if discount rate is 25% then rate type code will have code type as DISCOUNT_RATE and rate factor value will have 25	
UnitOfMeasurement	/FreightShipResponse/ShipmentResults/Rate/Factor/UnitOfMeasurement	No	One	Container	N/A	Unit of measurement container for factors related to Rate Types.	
Code	/FreightShipResponse/ShipmentResults/Rate/Factor/UnitOfMeasurement/Code	Yes	One	String	3	This will contain measurement unit (e.g. LBS for weight, USD for dollar amount). Rate should have code type that pertains to Unit Of Measurement Code. For e.g. if rate type code has code type DISCOUNT then Unit Of Measurement Code should be USD to represent the measurement unit of discounted dollar amount	

Name	XPath	Required	Max Allowed	Type	Length	Description	Validation Rules
Description	/FreightShipResponse/ShipmentResults/Rate/Factor/UnitOfMeasurement/Description	No	One	String	35	Description of unit of measurement code for rate factors	
TotalShipmentCharge	/FreightShipResponse/ShipmentResults/TotalShipmentCharge	No	One	Container	N/A	TotalShipmentCharge Container. Can only be returned if the billing option is prepaid.	
CurrencyCode	/FreightShipResponse/ShipmentResults/TotalShipmentCharge/CurrencyCode	Yes	One	String	3	Total shipment Charge currency code type.	
MonetaryValue	/FreightShipResponse/ShipmentResults/TotalShipmentCharge/MonetaryValue	Yes	One	String	16.2	Total shipment charge.	
MinimumBillableWeightAppliedIndicator	/FreightShipResponse/ShipmentResults/MinimumBillableWeightAppliedIndicator	No	One	String	0	Indicates the Air Freight Rate is based upon Minimum Billable Weight.	Air freight only.
BillableShipmentWeight	/FreightShipResponse/ShipmentResults/BillableShipmentWeight	No	One	Container	N/A	BillableShipmentWeight Container. Can only be returned if the billing option is prepaid.	
UnitOfMeasurement	/FreightShipResponse/ShipmentResults/BillableShipmentWeight/UnitOfMeasurement	Yes	One	Container	N/A	UnitOfMeasurement Container.	

Name	XPath	Required	Max Allowed	Type	Length	Description	Validation Rules
Code	/FreightShipResponse/ShipmentResults/BillableShipmentWeight/UnitOfMeasurement/Code	Yes	One	String	3	The code associated with the unit of measure for the billable weight of a shipment.	
Description	/FreightShipResponse/ShipmentResults/BillableShipmentWeight/UnitOfMeasurement/Description	No	One	String	35	The description for the billable weight associated with the shipment.	
Value	/FreightShipResponse/ShipmentResults/BillableShipmentWeight/Value	Yes	One	String	16.2	The value for the billable weight associated with the shipment.	
RatingSchedule	/FreightShipResponse/ShipmentResults/RatingSchedule	Cond	One	Container	N/A	Container to indicate whether Published or contract rates apply	Air freight only. Required for Air Only
Code	/FreightShipResponse/ShipmentResults/RatingSchedule/Code	Yes	One	String	2	Code to indicate whether Published or contract rates apply. Valid Values: 01 = Contract Rates 02 = Published Rates	Air freight only. Required for Air Only
Description	/FreightShipResponse/ShipmentResults/RatingSchedule/Description	No	One	String	35	Description to indicate whether Published or contract rates apply	Air freight only. Required for Air Only
DimensionalWeight	/FreightShipResponse/ShipmentResults/DimensionalWeight	No	One	Container	N/A	DimensionalWeight Container.	Air freight only.

Name	XPath	Required	Max Allowed	Type	Length	Description	Validation Rules
UnitOfMeasurement	/FreightShipResponse/ShipmentResults/DimensionalWeight/UnitOfMeasurement	Yes	One	Container	N/A	UnitOfMeasurement Container.	Air freight only.
Code	/FreightShipResponse/ShipmentResults/DimensionalWeight/UnitOfMeasurement/Code	Yes	One	String	2	The code associated with the unit of measure for the dimensional weight of a shipment.	Air freight only.
Description	/FreightShipResponse/ShipmentResults/DimensionalWeight/UnitOfMeasurement/Description	No	One	String	35	The description for the dimensional weight associated with the shipment.	Air freight only.
Value	/FreightShipResponse/ShipmentResults/DimensionalWeight/Value	Yes	One	String	5	The value for the dimensional weight associated with the shipment.	Air freight only.
Service	/FreightShipResponse/ShipmentResults/Service	No	One	Container	N/A	Service Container.	
Code	/FreightShipResponse/ShipmentResults/Service/Code	Yes	One	String	3	The code for the UPS Service associated with the shipment.	
Description	/FreightShipResponse/ShipmentResults/Service/Description	No	One	String	35	A text description of the UPS Service associated with the shipment.	



Name	XPath	Required	Max Allowed	Type	Length	Description	Validation Rules
Documents	/FreightShipResponse/ShipmentResults/Documents	No	One	Container	N/A	Documents Container.	
Image	/FreightShipResponse/ShipmentResults/Documents/Image	No	unbounded	Container	N/A	Image Container.	
Type	/FreightShipResponse/ShipmentResults/Documents/Image/Type	Yes	One	Container	N/A	Image Type Container.	
Code	/FreightShipResponse/ShipmentResults/Documents/Image/Type/Code	Yes	One	String	2	Code representing the image type. Valid values are: 10 - AWB 20 - UPS BOL 21 - VICS BOL 30 - Label	
Description	/FreightShipResponse/ShipmentResults/Documents/Image/Type/Description	Yes	One	String	35	Description of the image type code.	
GraphicImage	/FreightShipResponse/ShipmentResults/Documents/Image/GraphicImage	Yes	One	String	unbounded	Base 64 encoded graphic image.	

Name	XPath	Required	Max Allowed	Type	Length	Description	Validation Rules
Format	/FreightShipResponse/ShipmentResults/Documents/Image/Format	Yes	One	Container	N/A	ImageFormat Container.	
Code	/FreightShipResponse/ShipmentResults/Documents/Image/Format/Code	Yes	One	String	3	Code representing the image format. Currently only pdf is supported.	
Description	/FreightShipResponse/ShipmentResults/Documents/Image/Format/Description	Yes	One	String	35	Description of the image format code.	
Forms	/FreightShipResponse/ShipmentResults/Documents/Forms	No	unbounded	Container	N/A	Forms Container.	
Type	/FreightShipResponse/ShipmentResults/Documents/Forms/Type	Yes	One	Container	N/A	Forms Type Container.	
Code	/FreightShipResponse/ShipmentResults/Documents/Forms/Type/Code	Yes	One	String	2	Code representing the form type: 01 - All requested International Forms; 02 - Packing List	
Description	/FreightShipResponse/ShipmentResults/Documents/Forms/Type/Description	Yes	One	String	35	Description of the form type code.	

Name	XPath	Required	Max Allowed	Type	Length	Description	Validation Rules
GraphicImage	/FreightShipResponse/ShipmentResults/Documents/Forms/GraphicImage	Yes	One	String	unbounded	Base 64 encoded graphic image.	
Format	/FreightShipResponse/ShipmentResults/Documents/Forms/Format	Yes	One	Container	N/A	Forms Format Container.	
Code	/FreightShipResponse/ShipmentResults/Documents/Forms/Format/Code	Yes	One	String	3	Code representing the format of the form. Currently only pdf is supported.	
Description	/FreightShipResponse/ShipmentResults/Documents/Forms/Format/Description	Yes	One	String	35	Description of the format code of the form.	
HoldAtAirportPickupDate	/FreightShipResponse/ShipmentResults/HoldAtAirportPickupDate	Cond	One	String	8	The Hold At Airport Pickup Date. Format is YYYYMMDD	Air freight only.
NextAvailablePickupDate	/FreightShipResponse/ShipmentResults/NextAvailablePickupDate	Cond	One	String	8	The Next Available Pickup Date. When the requested Pickup Date is unavailable. Format is YYYYMMDD	Air freight only.
TimeInTransit	/FreightShipResponse/ShipmentResults/TimeInTransit	No	One	Container		Time In transit information.	Ground freight only.

Name	XPath	Required	Max Allowed	Type	Length	Description	Validation Rules
DaysInTransit	/FreightShipResponse/ShipmentRes ults/TimeInTransit/DaysInTransit	No	One	String		Number of days in transit.	Ground freight only.

## 1.9 Customer Integration Environment

The Customer Integration Environment allows customers to test their application prior to launch. This environment is intended for integration testing of customer applications with the UPS servers. No stress testing should ever be performed by customers against any UPS systems.

Once your application has been thoroughly tested, you should redirect the application to the UPS Production Environment.

Please note that while the Customer Integration Environment maintains system availability 24 hours, 7 days each week, there are occasional system down times to allow for server maintenance.

For integration testing, you should direct your Rate test software to:

<https://wwwcie.ups.com/webservices/FreightShip>

### System Availability

The Customer Integration Environment is available 24 hours a day, 7 days a week.

### Server Availability Check

All of the UPS services work using HTTPS POST. Using the same URL as you point your application to, perform an HTTPS GET. If the server is available, it will reply with the service name, remote user, server port, server name, and servlet path. To see this in action, type the following URL in your web browser:

<https://wwwcie.ups.com/webservices/FreightShip>

The following will be returned:

**Service Name:** FreightShipWS

**Remote User:** null

**Server Port:** 443

**Server Name:** wwwcie.ups.com

**Servlet Path:** /FreightShip

## 1.10 Ground Freight Certification for Test Cases

One of the certification requirements for the Ground Freight API requires that the correct results from Scenario 1 is entered into the web form on UPS.com under the Manage your access key, request production access. Scenarios 2 through 6 are for developer testing only and values returned may vary. An issue should only be reported if no amount is returned in the response for scenarios 2 through 6.

### Scenario 1 – Basic Pricing

**Input:**

Type	Value
Shipper Name	Developer Test 1
Shipper Address	101 Developer Way
Shipper City	Richmond
Shipper State	VA
Shipper (Origin) Zip	23224
Consignee Name	Consignee Test 1
Consignee Address	1000 Consignee Street
Consignee City	Allanton
Consignee State	MO
Consignee (Destination) Zip	63001
Prepaid/Collect	P (Prepaid)
Weight (lb)	1500
Class	92.5
NMFC	116030 sub 1

**Output:**

Certification requires the return of result data. Provide the following three (3) data results on the Global eCommerce form for Freight Certification:

**Total Freight Charges:**

<freightShip:TotalShipmentCharge>

Or <freightrate:TotalShipmentCharge>

**Pickup Confirmation Number:**

<freightPickup:PickupRequestConfirmationNumber>

**BOL Number:**

<freightShip:BOLID>

An email will be sent approving production access. Once granted, point your software to:

<https://onlinetools.ups.com/webservices/FreightShip> or

<https://onlinetools.ups.com/webservices/FreightRate>

**Scenario 2 – Exception Pricing****Input:**

Type	Value
Shipper Name	Developer Test 2
Shipper Address	202 Developer Way
Shipper City	Atlanta
Shipper State	GA
Shipper (Origin) Zip	30328
Consignee Name	Consignee Test 2
Consignee Address	2000 Consignee Street
Consignee City	Allanton

<b>Consignee State</b>	MO
<b>Consignee (Destination) Zip</b>	63001
<b>Prepaid/Collect</b>	P (Prepaid)
<b>Weight (lb)</b>	1500
<b>NMFC</b>	116030 sub 1
<b>Class</b>	92.5

**Output:**

<b>Type</b>	<b>Value</b>
<b>Disc</b>	70%
<b>Total Charges</b>	\$286.11

**Scenario 3 – Regional Tier Pricing****Input:**

<b>Type</b>	<b>Value</b>
<b>Shipper Name</b>	Developer Test 2
<b>Shipper Address</b>	202 Developer Way
<b>Shipper City</b>	Atlanta
<b>Shipper State</b>	GA
<b>Shipper (Origin) Zip</b>	30328
<b>Consignee Name</b>	Consignee Test 3
<b>Consignee Address</b>	3000 Consignee Street
<b>Consignee City</b>	Richmond
<b>Consignee State</b>	VA
<b>Consignee (Destination) Zip</b>	23224
<b>Prepaid/Collect</b>	P (Prepaid)
<b>Weight (lb)</b>	1500
<b>Class</b>	92.5
<b>NMFC</b>	116030 sub 1

**Output:**

<b>Type</b>	<b>Value</b>
<b>Disc</b>	72%
<b>Total Charges</b>	\$198.15

**Scenario 4 – Accessorial Charge Exception****Input:**

<b>Type</b>	<b>Value</b>
<b>Shipper Name</b>	Developer Test 2
<b>Shipper Address</b>	202 Developer Way
<b>Shipper City</b>	Atlanta

<b>Shipper State</b>	GA
<b>Shipper (Origin) Zip</b>	30328
<b>Consignee Name</b>	Consignee Test 3
<b>Consignee Address</b>	3000 Consignee Street
<b>Consignee City</b>	Richmond
<b>Consignee State</b>	VA
<b>Consignee (Destination) Zip</b>	23224
<b>Prepaid/Collect</b>	P (Prepaid)
<b>Weight (lb)</b>	1500
<b>Class</b>	92.5
<b>NMFC</b>	116030 sub 1
<b>Accessorial</b>	NTFN (Notification)

**Output:**

Type	Value
<b>Disc</b>	72%
<b>Total Charges</b>	\$198.15

**Scenario 5 – Canadian Pricing****Input:**

Type	Value
<b>Shipper Name</b>	Developer Test 2
<b>Shipper Address</b>	202 Developer Way
<b>Shipper City</b>	Atlanta
<b>Shipper State</b>	GA
<b>Shipper (Origin) Zip</b>	30328
<b>Consignee Name</b>	Consignee Test 5
<b>Consignee Address</b>	5000 Consignee Street
<b>Consignee City</b>	St Johns
<b>Consignee State</b>	NF
<b>Consignee (Destination) Zip</b>	A1A1A1
<b>Prepaid/Collect</b>	P (Prepaid)
<b>Weight (lb)</b>	1500
<b>Class</b>	92.5
<b>NMFC</b>	116030 sub 1
<b>Service</b>	LTL
<b>Handling Unit One Code</b>	SKD

**Output:**

Type	Value
<b>Disc</b>	70%
<b>Total Charges</b>	\$1375.42



**Scenario 6 – GFP Pricing****Input:**

Type	Value
Shipper Name	Developer Test 2
Shipper Address	202 Developer Way
Shipper City	Atlanta
Shipper State	GA
Shipper (Origin) Zip	30328
Consignee Name	Consignee Test 2
Consignee Address	2000 Consignee Street
Consignee City	Allanton
Consignee State	MO
Consignee (Destination) Zip	63001
Prepaid/Collect	P (Prepaid)
Weight (lb)	200
Class	92.5
NMFC	116030 sub 1
UPS Account #	AF6458

Note: It does not matter what UPS Account # is entered. For test purposes, the account number will be hard coded so the output below will be returned.

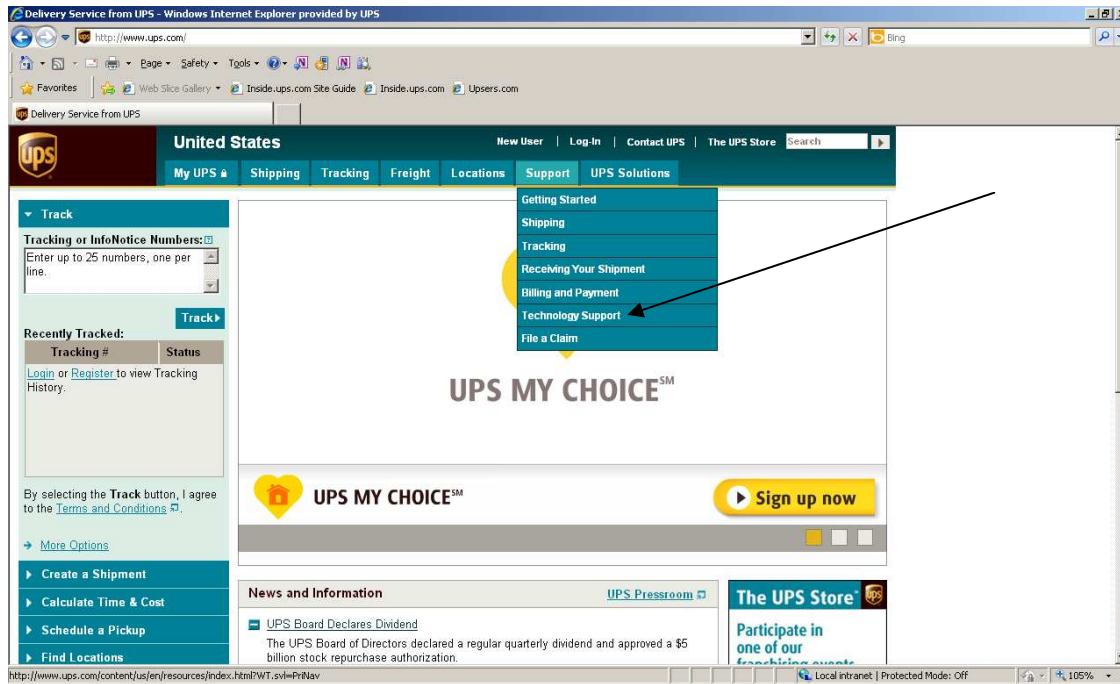
**Output:**

Type	Value
Disc	72%
Total Charges	\$71.18

## Appendix A - Accessing Tech Support (US Site Example)

Go to ups.com and log in to myUPS with your ID and PW.

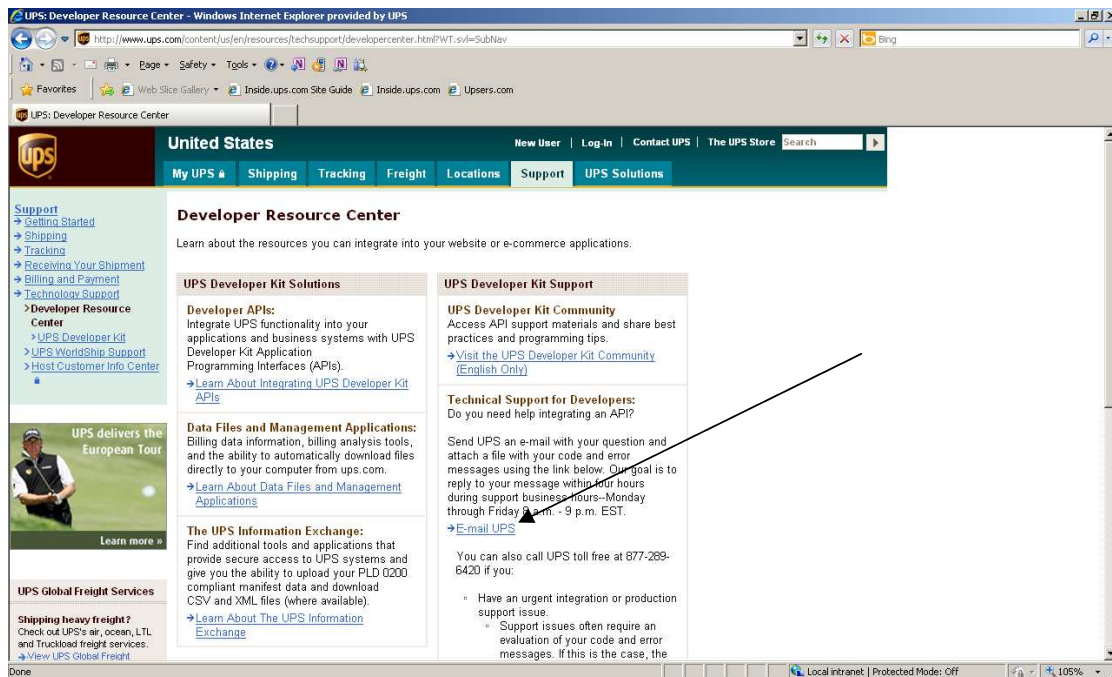
Hover over the “Support” tab, and select “Technology Support” from the drop-down.



From the Technology Support page select the Developer Resource Center link from the left navigation.

The screenshot shows the UPS Technology Support page in a Windows Internet Explorer browser. The address bar displays the URL: [http://www.ups.com/content/us/en/resources/techsupport/index.html?WT.svl=PMRO\\_L1](http://www.ups.com/content/us/en/resources/techsupport/index.html?WT.svl=PMRO_L1). The page features a navigation menu on the left with the following links: [Support](#), [Getting Started](#), [Shipping](#), [Tracking](#), [Receiving Your Shipment](#), [Billing and Payment](#), [Technology Support](#) (selected), [Developer Resource Center](#), [UPS WorldShip Support](#), and [Host Customer Info Center](#). The main content area is titled 'Technology Support' and contains three sections: 'How To...' with a list of links including 'Reset My Password', 'Retrieve Username', 'Register for UPS.com', 'Use Your UPS Thermal Printer', 'Get UPS Billing Data', 'Download the UPS Billing Analysis Tool', 'Access the Developer Resource Center' (highlighted by an arrow), 'View My Shipping History', 'Request a Delivery Intercept', 'Import/Export a File', 'Process a Return Shipment', 'Void a Shipment', 'Process a Shipment', 'Reprint a Label', 'Reprint a Report', 'Run End-Of-Day in WorldShip', and 'Add Shipper Number'; 'Tools and Resources' with links for 'Calculate Time and Cost', 'WorldShip® Support', 'UPS Developer Kit', 'UPS WorldShip Help Files', 'Online Shipping Demo', and 'Host Customer Info Center'; and 'UPS Ready Program' with a link to 'UPS Ready Program'. A search bar is located on the left, and a 'Sign up now' button is at the bottom left. The browser's status bar at the bottom indicates 'Local intranet | Protected Mode: Off' and a zoom level of 105%.

From the Developer Resource Center page select the “Email UPS” link in right hand column.



Complete Name, email address, Support Category must be “Technical Support”, and Support Topic must be “Developer Resource”. Select the “Next” button.

UPS: E-mail UPS - Windows Internet Explorer provided by UPS

https://www.ups.com/upsemail/input?requestId= United Parcel Service Inc [US]

UPS: E-mail UPS

My UPS | Shipping | Tracking | Freight | Locations | Support | UPS Solutions

Support

- Getting Started
- Shipping
- Tracking
- Receiving Your Shipment
- Billing and Payment
- Technology Support

UPS delivers the European Tour

Learn more »

UPS Global Freight Services

Shipping heavy freight? Check out UPS's air, ocean, LTL and Truckload freight services. View UPS Global Freight Services Demo

Support

E-mail UPS

Do you have a question or comment? Please enter the information below and select **Next** to continue. Required fields are indicated with \*

Your Name: Daniel Franz

Your E-mail Address: dfranz@ups.com

UPS Privacy Policy

Support Category: Technical Support

Support Topic: Developer Resources

Are you the ...

Based on the information you have provided so far, the following support topics may answer your questions.

- What are APIs?
- How can APIs help my business?
- Will I have to accept a long-term licensing agreement to get an API?
- What is the knowledge base within the Developer Resource Center?

Cancel Next

Scroll down the page and complete the remainder of the email form including “Your Telephone”, “Stage of Development”, “Developer Resource” which is which API you are integrating, “Attach File” where you attach your XML Request/Response Pair, and any pertinent description of the issues in the “What is your question or comment?” field. Select “Send Email” button.

UPS: E-mail UPS - Windows Internet Explorer provided by UPS

https://www.ups.com/upsemal/includeForm?loc=en\_US

United Parcel Service Inc [US]

UPS: E-mail UPS

Please enter the following information to help us provide a better answer to your e-mail question. Select **Send E-mail** to continue, and UPS will respond within one business day. Required fields are indicated with \*.

**Your Telephone:**

**Stage of Development:**

**Developer Resource:**

**Version Number:**

**Attach File:**

If you need to attach multiple files, please combine them into a single archive file (e.g. a zip file) and attach the archive file. The file must not exceed 2.9 MB.

**What is your question or comment?**

Type description of problem here.

(Maximum 1000 characters)

The screen below will appear. Please see “Technical Support (US)” within this document for tech support hours of operation and response times.

UPS: E-mail UPS - Windows Internet Explorer provided by UPS

https://f1e5fer.ups.com/upsemal/onlineTools/loc=en\_US

United States

Welcome, Daniel Franz | Logout | Contact UPS | The UPS Store

My UPS | Shipping | Tracking | Freight | Locations | Support | UPS Solutions

**E-mail UPS**

Your e-mail has been sent to UPS.

A customer service representative will respond to you within one business day.

Support

- Getting Started
- Shipping
- Tracking
- Receiving Your Shipment
- Billing and Payment
- Technology Support

UPS MY CHOICE™

TIRED OF GETTING THIS?

Sign up now

UPS Global Freight Services

Shipping heavy freight?

Check out UPS's air, ocean, LTL and Truckload freight services.

View UPS Global Freight Services Demo

Subscribe to UPS E-mail: [Modify E-mail Preferences](#) [View Examples](#)

Site Feedback

## Appendix B – Freight Ship WebServices Error Codes

To discover errors, check the ResponseStatusCode element. A “1” normally indicates a successful response, whereas a “0” indicates an error, either Transient or Hard. When an error occurs there will also be an error code, and an error description.

- Success – Successful responses may or may not include **Warnings**.
  - (without warnings) Request is processed as anticipated by the client.
  - (with warnings) *Warning* messages indicate that UPS was able to process the request; however (potentially) unanticipated results have also occurred. The warning contains information in the response that should be passed to the end user.
- Errors – will return two different levels of severity.
  - *Transient* errors are temporary errors, due to temporary high server loads or scheduled maintenance, for example. The application may re-issue the request at a later time.
  - *Hard* errors indicate that an error existed in the request that UPS could not resolve. These errors are critical and prevent requests from processing.

Applications should not re-issue requests with Hard errors without first correcting the error. The following table lists the errors that UPS may return in response to a request.

Error Code	Severity	Description
10001	Hard	The XML document is not well formed
10002	Hard	The XML document is well formed but not valid
10003	Hard	No XML document found
10006	Hard	Although the document is well formed and valid, the element content contains values which do not conform to the rules and constraints contained in this specification
10013	Hard	The message is too large to be processed by this service
20001	Transient	Service Unavailable
20002	Hard	The specified service name, {0}, and version number, {1} combination is invalid
20007	Hard	Missing Required field, {0}
20008	Hard	The field, {0}, contains invalid data, {1}
250001	Hard	Invalid Access License for the tool. Please re-license.
250002	Hard	Invalid UserId/password
250003	Hard	Invalid Access License Number
250004	Hard	Incorrect UserId or Password
250005	Hard	No Access and Authentication Credentials provided
250006	Hard	The maximum number of user access attempts was exceeded
250007	Hard	The UserId is currently locked out, please try again in 24 hours
250009	Hard	License Number not found in the UPS database
250019	Hard	Invalid Field Value
250050	Transient	License system not available

250051	Transient	Not allowed to create new License
250052	Transient	Authorization system is currently unavailable
9360567	Hard	Missing POM Number
9360568	Hard	Missing POM Number Type
9360569	Hard	Invalid failedEmail address.
9360570	Hard	Two or more of the selected services cannot be combined. Please resubmit using another combination.
9360572	Hard	Missing PickupNotifications element.
9360573	Hard	Missing email notification element
9360574	Hard	Missing failed email address.
9360575	Hard	Email address is missing.
9360576	Hard	Event type is missing.
9360577	Hard	POM not available for this origin
9360578	Hard	Not more than 5 EmailNotification elements allowed
9360579	Hard	Not more than 4 EventTypes allowed
9360580	Hard	Invalid Confirmation Number
9360581	Hard	Missing Confirmation Number
9360583	Hard	Invalid Event type
9360584	Hard	Invalid POM Number
9360585	Hard	Invalid POM Number type
9360586	Hard	POM is only available for Ground Freight shipments.
9370000	Transient	Freight Shipping Web Service is Unavailable
9370001	Hard	Missing Ship From Phone
9370041	Hard	Missing or Invalid Shipper Number
9370101	Hard	Missing Payment Information
9370151	Hard	Missing Shipment Billing Option
9370201	Hard	Missing Service
9370216	Hard	Missing or Invalid Handling Unit One Quantity
9370217	Hard	Missing Handling Unit One Type
9370231	Hard	Missing or Invalid Handling Unit Two Quantity
9370232	Hard	Missing Handling Unit Two Type
9370256	Hard	Missing Commodity {cardinality} Weight
9370257	Hard	Missing Commodity {cardinality} Weights Unit Of Measure
9370258	Hard	Missing the Commodity {cardinality} Dimensions Unit of Measurement
9370259	Hard	Missing Packaging Type of Commodity {cardinality}
9370260	Hard	Missing or Invalid Monetary Value of Commodity {cardinality}s Commodity Value
9370261		NMFC Commodity Prime Code is required when NMFC Commodity Sub Code is supplied for Commodity{0}
9370262		NMFCCommodity container and NMFCCommodityCode are mutually exclusive for Commodity{0}
9370327	Hard	Missing Reference {cardinality}s Number.
9370328	Hard	Invalid Number of Cartons in Reference {cardinality}.
9370329	Hard	Missing Reference {cardinality} Weights Unit of Measure
9370376	Hard	For a shipment, the maximum number of Email Information allowed for {Email Type} is 1

9370377	Hard	Missing Email Information {cardinality}s Email Type
9370378	Hard	Missing or Invalid Email Information {cardinality}s Email Type Code.
9370379	Hard	Missing Shipment Notification Email.
9370380	Hard	Missing or Invalid Shipment Notification undeliverable email address.
9370381	Hard	Missing Delivery Notification Email.
9370382	Hard	Missing or Invalid Delivery Notification undeliverable email address.
9370383	Hard	Missing Exception Notification Email.
9370384	Hard	Missing or Invalid Exception Notification undeliverable email address.
9370385	Hard	Missing Air Way Bill Notification Email.
9370386	Hard	Missing or Invalid Air Way Bill Notification undeliverable email address.
9370387	Hard	Missing BOL/Label Bill Notification Email.
9370388	Hard	Missing or Invalid BOL/Label Notification undeliverable email address.
9370421	Hard	Missing COD Value.
9370422	Hard	Missing the COD Payment Method.
9370423	Hard	Missing the COD Billing Option.
9370424	Hard	Missing Remit To Address
9370425	Hard	Missing COD Remit To
9370446	Hard	Missing Overseas Leg Dimensions
9370447	Hard	Missing the Unit of Measurement for the Overseas Leg Dimensions
9370448	Hard	Missing or Invalid Overseas Leg Value
9370449	Hard	Missing or Invalid Overseas Leg Volume
9370450	Hard	Missing or Invalid Overseas Leg Height
9370451	Hard	Missing or Invalid Overseas Leg Length
9370452	Hard	Missing or Invalid Overseas Leg Width
9370453	Hard	Missing or Invalid Monetary Value for the Overseas Leg Price per Cubic Foot.
9370454	Hard	Missing or Invalid Monetary Value for the Overseas Leg Price per CWT.
9370455	Hard	Missing Value for Overseas Leg.
9370466	Hard	Invalid combination of Percentage and Value for the Handling Charge service option.
9370467	Hard	Missing Dangerous Goods Contact Name
9370468	Hard	Missing Dangerous Goods Phone
9370469	Hard	Missing Dangerous Goods Phone Number
9370470	Hard	Missing or Invalid Handling Charge Percentage or value
9370471	Hard	Invalid Combination of Handling Charge Percentage and Value
9370527	Hard	Missing Pickup Requester Phone.
9370651	Hard	Missing or Invalid document image labels per page for image {cardinality}



9370652	Hard	Missing or Invalid document image type code for image {cardinality}
9370653	Hard	Missing or invalid format code for image {cardinality}
9370654	Hard	Missing print size for image {cardinality}
9370655	Hard	Missing or invalid print size width for image {cardinality}
9370656	Hard	Missing or invalid print size length for image {cardinality}
9370657	Hard	Missing print format for image {cardinality}.
9370658	Hard	Missing or invalid print format code for image {cardinality}.
9370659	Hard	Missing document image type for image{cardinality}.
9370660	Hard	Missing format for image {cardinality}.
9370661	Hard	Invalid document image {cardinality} print sizes.
9370701	Hard	Invalid processing option
9370751	Hard	Missing or invalid ship from company name in packing list.
9370752	Hard	Invalid ship from attention name in packing list.
9370753	Hard	Missing or invalid ship from address line one in packing list.
9370754	Hard	Invalid ship from address line two in packing list.
9370755	Hard	Invalid ship from address line three in packing list.
9370756	Hard	Missing or invalid ship from city in packing list.
9370757	Hard	Invalid ship from state code in packing list.
9370758	Hard	Missing or invalid ship from country code in packing list.
9370759	Hard	Invalid ship from postal code in packing list.
9370760	Hard	Invalid ship from town in packing list.
9370761	Hard	Invalid ship from phone number in packing list.
9370762	Hard	Invalid ship from phone extension in packing list.
9370764	Hard	Missing or invalid ship to company name in packing list.
9370765	Hard	Invalid ship to attention name in packing list.
9370766	Hard	Missing or invalid ship to address line one in packing list.
9370767	Hard	Invalid ship to address line two in packing list.
9370768	Hard	Invalid ship to address line three in packing list.
9370769	Hard	Missing or invalid ship to city in packing list.
9370770	Hard	Invalid ship to state code in packing list.
9370771	Hard	Missing or invalid ship to country code in packing list.
9370772	Hard	Invalid ship to postal code in packing list.
9370773	Hard	Invalid ship to town in packing list.
9370774	Hard	Invalid ship to phone number in packing list.
9370775	Hard	Invalid ship to phone extension in packing list.
9370777	Hard	Missing or invalid packing list reference value one.
9370778	Hard	Missing or invalid packing list reference value two.
9370779	Hard	Invalid packing list reference label one.
9370780	Hard	Invalid packing list reference label two.
9370781	Hard	Invalid total number of commodities in packing list.
9370782	Hard	Invalid handling unit instructions in packing list.
9370783	Hard	Invalid handling unit total number of pieces in packing list.
9370784	Hard	Invalid handling unit total weight in packing list.
9370785	Hard	Missing or invalid handling unit UOM in packing list.

9370786	Hard	Invalid handling unit currency code in packing list.
9370787	Hard	Invalid number of pieces for commodity {index} in packing list.
9370788	Hard	Missing or invalid packaging type for commodity{index} in packing list.
9370790	Hard	Invalid description for commodity{index} in packing list.
9370791	Hard	Invalid NMFCCommodityCode for commodity{index} in packing list.
9370792	Hard	Invalid freight class for commodity{index} in packing list.
9370793	Hard	Missing or invalid length for commodity{index} in packing list.
9370794	Hard	Missing or invalid width for commodity{index} in packing list.
9370795	Hard	Missing or invalid height for commodity{index} in packing list.
9370796	Hard	Invalid weight for commodity{index} in packing list.
9370797	Hard	Invalid price for commodity{index} in packing list.
9370798	Hard	Invalid total number of handling units in packing list.
9371000	Hard	Invalid Freight Shipping Request Document
9360017	Hard	Invalid Origin Location
9360077	Hard	Origin and Destination are the same
9360078	Hard	Invalid Destination Location.
9360117	Hard	3rd Party Payment terms and 3rd country payer not allowed.
9360600	Hard	Invalid Service Code
9360481	Hard	Customs Value is Missing or Invalid.
9360482	Hard	Hazmat Transportation Mode is Missing or Invalid.
9360483	Hard	Invalid Saturday Delivery Accessorial.
9360484	Hard	Hold At Airport For Pickup accessorial is not valid for service selected.
9360500	Hard	Invalid Accessorial Code
9360558	Hard	Same-day pickups scheduled at 3pm or later may be rescheduled for the following day.
9360559	Hard	Ready Time and Drop off Time both provided.
9360560	Hard	Pickup date is a Saturday, Sunday or Holiday and cannot be accommodated
9360561	Hard	Same day pickup not available. Pickup the next available pickup date.
9360562	Hard	Drop off time is not valid. After last drop off time
9360563	Hard	Missing or Invalid Ready Time
9360564	Hard	Pickup date is not valid. No pickups on Sat, Sun or Holiday
9360565	Hard	Requested Pickup date future date maximum
9360566	Hard	Insufficient Last Pickup Time and Lead Time data to calculate cut-off. Ready Time must be prior to 9:00:00 AM
9360728	Hard	Shipment total weight under 151 pounds.
9360729	Hard	Linear feet is required for total weight more than 10,000 lbs.

9360730	Hard	Missing required shipment parties.
9360731	Hard	Duplicate Shipment Number.
9360032	Hard	Confirmation Number not found.
9360033	Hard	Invalid Tariff Point Code
9360034	Hard	Cannot update completed shipment.
9368775	Hard	Invalid NMFC Prime Number for commodity{0}
9369061	Hard	The origin is located in an extended area requiring an estimated 2 days additional transit time.
9369062	Hard	The destination is located in an extended area requiring an estimated 1 day additional transit time.
9369063	Hard	The destination is located in an extended area requiring an estimated 2 day additional transit time.
9369064	Hard	UPS 3 Day transit time is greater than 3 days.
9369065	Hard	Payment Terms and lane selected requires pre-authorization.
9370060	Hard	Missing Confirmation Number container.
9370061	Hard	Missing or Invalid Account Type Code.
9370062	Hard	Missing Confirmation Number Type.
9370063	Hard	Missing or invalid Code for Confirmation Number Type.
9370064	Hard	Missing or invalid Confirmation Number Value.
9370065	Hard	BOLID and confirmation number cannot be used together. Please use confirmation number instead.
9370066	Hard	Missing or Invalid Creation Date.
9370175	Hard	Missing or Invalid Manufacturer Country Code.
9370245	Hard	Missing or Invalid Shipment Total Weight Value.
9370246	Hard	Missing Unit of Measurement for Shipment Total Weight.
9370247	Hard	Missing or Invalid Unit of Measurement Code for Shipment Total Weight.
9372000	Hard	Missing TaxID Type Container.
9372001	Hard	Missing or Invalid Code for TaxID Type.
9372002	Hard	Missing or Invalid TaxID Number.
9360079	Hard	UPS Freight® LTL Guaranteed A.M. service is not valid for the destination postal code you entered.
9360080	Hard	Shipment is not eligible for LTL guaranteed service.
9360081	Hard	Shipment is not eligible for UPS Freight® LTL Guaranteed A.M. service.
9360082	Hard	LTL guaranteed Service not available.
9368780	Hard	Invalid ship date. Ship date should not be in the past.
9368781	Hard	Invalid numbers of handling units. Should be between 1 and 9999.
9368782	Hard	Invalid request type. Valid values are L, F, B and P.
9368783	Hard	Invalid request party. Valid values are S, C and T.
9368784	Hard	At least one shipment is required.
9368785	Hard	Please contact UPS Freight Customer Service for Rates at 800-333-7400
9368786	Hard	Please contact UPS Freight Customer Service for Rates at 800-333-7400

9368787	Hard	Invalid Ship From Address.
9360083	Hard	Invalid destination postal code, please verify and resubmit.
9368788	Hard	Shipment weight must be less than 10,000 lbs
9368789	Hard	Please contact UPS Freight Customer Service for Rates at 800-333-7400
9368790	Hard	Weight unit of measure is invalid

## Appendix C – Freight Packaging Type

UPS Freight Services support a variety of packaging types. The following table lists the codes used to designate each type.

Code	Description
BAG	Bag
BAL	Bale
BAR	Barrel
BDL	Bundle
BIN	Bin
BOX	Box
BSK	Basket
BUN	Bunch
CAB	Cabinet
CAN	Can
CAR	Carrier
CAS	Case
CBY	Carboy
CON	Container
CRT	Crate
CSK	Cask
CTN	Carton
CYL	Cylinder
DRM	Drum
LOO	Loose
OTH	Other
PAL	Pail
PCS	Pieces
PKG	Package
PLN	Pipe Line
PLT	Pallet
RCK	Rack
REL	Reel
ROL	Roll
SKD	Skid
SPL	Spool
TBE	Tube
TNK	Tank
UNT	Unit
VPK	Van Pack
WRP	Wrapped

## Appendix D – Freight Charge Codes

Freight shipments may include various charges. The following table lists the codes used to indicate these charges.

Code	Charge
2	Fuel Surcharge
ADV_NOTF	Arrival Notification
AFTR_DSCNT	Amount after Discount
CA_BORDER	Border Processing Fee
CA_CSTM_MNFST	Custom Manifest Fee
COD	Collect on Delivery fee
CON_ST_DEL	Construction Site Delivery
DEFICITRATE	Deficit Rate
DEFICITWGHT	Deficit Weight
DFCT_AMT	Deficit Charge
DSCNT	Discounted Amount
DSCNT_RATE	Discount Rate (as a percentage)
EXC_LEN	Extreme Length
FREEZE_PROT	Freezable Protection
HAZMAT	Hazardous Materials Charge
HICST	High Cost Service Area Surcharge
HOL_WE_PU_DEL	Holiday/Weekend Pickup or Delivery
INSD_PU_DEL	Inside Pickup/Delivery
L_UPGF_016	Custom Charge
LIFTGATE	Liftgate Fee
LIM_ACC_PU_DEL	Limited Access Pickup/Delivery
LND_GROSS	Gross Charges
MINCHARGE	Minimum Charge Applies
OFUELSURCHG	Ocean Fuel Surcharge
RESI_PU_DEL	Residential Pickup/Delivery
RMTLOC	Remote Location Fee
SORTSEG	Sorting and Segregation
TOTI	Total Island Charges
TOTO	Total Ocean Charges
GUAR_SERVICE	Guaranteed Service Charges
EXLI	Excess Declared Value Charges

## Appendix E – Freight Reference Number Codes

Freight shipments may include a reference number. The type of reference number may be indicated by a reference number code. The only reference numbers that can be tracked are Bill of Lading Number and Purchase Order Number. All other reference numbers up to five references can be printed on the BOL. The following table lists the reference number code values.

Code	Reference Number Type
57	Bill of Lading Number
28	Purchase Order Number
OTHER	TYPE_OTHER
PM	TYPE_PM
PROJ	TYPE_PROJ
QUOTE	TYPE_QUOTE
SID	TYPE_SID
TASK	TYPE_TASK
VPRC	TYPE_VPRC
SH	Shipper Reference (Shipment Level Reference for E2K)
CO	Consignee Reference(Shipment Level Reference for E2K)

## Appendix F – Freight Billing Option Codes

Freight shipments may include various charges. The following table lists the codes used to indicate these charges.

Code	Billing Option
10	Prepaid
30	Bill to Third Party
40	Freight Collect



## Appendix G – Freight Classes

The following table lists freight classes available from UPS freight services.

Freight Classes
50
55
60
65
70
77.5
85
92.5
100
110
125
150
175
200
250
300
400
500

## Appendix H – Ground Freight Service Codes

UPS offers a variety of ground freight delivery services. The following tables list the service code values for these services.

Code	Charge
308	UPS Freight LTL
309	UPS Freight LTL - Guaranteed
334	UPS Freight® LTL - Guaranteed A.M.

## Appendix I- Handling Unit Codes

Valid Freight Handling Unit Codes in the following table.

Code	Valid for Handling Unit One	Valid for Handling Unit Two	Description
SKD	X		SKID
CBY	X		CARBOY
PLT	X		PALLET
TOT	X		TOTES
LOO		X	LOOSE
OTH		X	OTHER

## Appendix J- COD Billing Option Codes

Freight shipments may include various COD billing options. The following table lists the codes used to indicate these options.

Code	Billing Option
01	Prepaid
02	Freight Collect

## Appendix K- COD Payment Method Codes

Freight shipments may include various COD Payment Methods. The following table lists the codes used to indicate these methods.

Code	Description
C	Cash
M	Company Check
R	Certified Check

## Appendix L – Pickup Notifications for LTL POMNumberTypes Values

The following table lists valid types for the POMNumberType element.

Freight Classes
Load number
SID number
PO number
Project
Quote number
VPRC
P&M
Release number
RA number
Task
Pickup number
Pickup Reference number
PRO number
BOL number
Other

## Appendix M – Pickup Notifications for LTL Event Types

The following table lists freight classes available from UPS freight services.

Code	Description
RR	PICKUP_REQUEST_CONFIRM
EN	DRIVER_EN_ROUTE
PS	PICKUP_SECURED
PX	PICKUP_EXCEPTION

## Appendix N - Frequently Asked Questions: Shipping Ground Freight

API	Category	Question	Answer
Shipping	General	What is the minimum weight limit for LTL Freight shipments?	There is no minimum weight for shipping LTL Freight via the LTL Freight Shipping API Web Service.
Shipping	LTL Shipping	Does the API rate offshore shipments?	No. Please call Customer Service at 1-800-333-7400 for offshore rating
Rating	LTL Shipping	Is Pallet Rating supported?	Pallet rating is not supported for online rating. Please contact 800-266-6902 for pallet rating.
Shipping	LTL Shipping	What are the valid origin countries for LTL Freight?	Origin countries available match those available through LTL Freight including; US, CA, MX, and PR.
Shipping	Negotiated Rates	How do I get access to LTL Freight negotiated rates?	Contact your Account Representative and insure that you have a myLTL ID set up with LTL Freight at; <a href="http://www.upsfreight.com">www.upsfreight.com</a>
Shipping	Fuel Surcharge	Is the Fuel Surcharge listed as a separate line item in the response for the Rating API for LTL?	Yes. The fuel surcharge is listed as a separate line item within the response.
Shipping	Maximum Shipment Weight	What is the maximum shipment weight for LTL Freight?	Anything 10,000 lbs or over is considered a truckload move. Our public rate engine will not return a rate on shipments weighing equal to or more than 10,000lbs. Instead, the user gets the following message. Rate a Shipment is not available for this shipment. Please call Customer Service at 1-800-333-7400 for assistance with this rate.
Shipping	Rates	Are there any rate structures that are not allowable for LTL Freight?	No. Czar and Czar Lite rate structures are permitted for use with the Rating or Shipping API for LTL Freight UPS Freight approval required...
Shipping	Rates	I have CZAR rates...are they available for use with the LTL Freight Rating or Shipping APIs?	Yes. Czar and Czar Lite rate structures are permitted for use with the Rating or Shipping API for LTL Freight UPS Freight approval required...
Shipping	Rates	Are Third Party or Freight Collect available through either the Rating or Shipping APIs?	Yes. The LTL Freight Rating and Shipping APIs are only available for the customers who are paying the invoice.
Shipping	Rates	What rates can be returned using the rating API?	Published rates based on the UPS560 tariff or a contract rate negotiated with UPS Freight.
Shipping	Rates	Can I choose the rate I want returned in the rate request?	No. The API supports a single rate type based on your setup with UPS Freight. (Examples: 1 – You do not have a negotiated rate contract with UPS Freight, Published rates will be returned. 2 – You have a negotiated rate contract with UPS Freight, your negotiated rate will be returned.)



API	Category	Question	Answer
Shipping	Time in Transit	Is Time in Transit available through the LTL Freight Rating or Shipping APIs?	Yes. Time in Transit(Days in Transit) for Ground Freight is available in the Freight Freight Ship and Freight Rate Web Services.
Shipping	Shipping Label and BOL	How is the Bill of Lading (BOL) formatted within the LTL Freight Shipping API response?	The BOL is returned within the LTL Freight Shipping API response as a [image/elements] that can be [1. printed immediately or 2. the elements assembled to create a .pdf by the customer for printing.]. Within the Shipping API - LTL Freight Developer Guide the Bill of Lading document is returned in the response as a base64 encoded string which, when decoded and saved, is a .pdf document ready to print.
Shipping	Support for Air Freight	Does the Shipping API - LTL Freight also support Air Freight?	No.
All	General - security	Does UPS support chained or unchained digital certificates?	We support chained digital certificates.
All	API availability	Within what countries are the Developer APIs available?	The Developer APIs are available in the countries listed at ups.com by API and by country under the UPS Developer Kit - Developer APIs. Click on any particular API to go to the API page and scroll to the bottom of the page to get the country listing for that particular API.
All	UPS Logos High Resolution	How do I get access to higher resolution logos than what are available within the downloads for the UPS Developer Kit - Developer APIs?	Customers are not routinely provided these UPS shield graphics without having a design/layout submitted to UPS Brand Management for approval. The customer needs to visit: <a href="https://www.upsbrandexchange.com/brandHome.awsp">https://www.upsbrandexchange.com/brandHome.awsp</a> This site will take them through the process for downloading a limited set of sample images for layout, and how to secure an approval for customer use, as well as the high-resolution graphics.
All	Technical Support email form	Is XPCI a required field within the email support form?	No.
All	Technical Support email form	From where is XPCI version number obtained and what does it mean?	XPCI stands for XML Package Carrier Interface (XPCI) and defines a vocabulary and structure for describing packages, shipments, and the activity details for package carriers and their customers. XPCI is a set of DTDs that defines the terminology, transaction enveloping, and XML message definitions. For a client to be XPCI-compliant, the client must generate a well-formed XML message that validates against the XPCI DTDs. Several DTDs, organized into three categories, define XPCI:  Vocabulary — This DTD defines the basic business vocabulary of XPCI. All tags used in a message are defined in this DTD. Interchange — This DTD defines the transaction-enveloping scheme. Every message includes transaction

API	Category	Question	Answer
			<p>information.</p> <p>Message — Each message has an associated DTD that defines the vocabulary of the message.</p> <p>The version and date would have been related to versioning however the APIs were not versioned so they currently do not carry significance. They remain as part of the APIs so that in the event they are versioned, we have these elements “just in case”.</p>
All	Technical Support	How do I get technical support for the APIs at ups.com?	Go to the Developer Resource Center and select email support under the UPS Developer Kit Support Column.
All	Characters	Can Japanese Kanji character be recognized by UPS Developer APIs?	No.
All	System Down-Times	Are there any designated system down times for the Developer APIs?	<p>Yes. The overall reserved downtime for the CGI servers is Saturday 10:00 PM ET through Sunday 12:00 PM ET. However, often the window is shortened to two 15 minute intervals with one starting at 11 PM and the other occurring sometime between 1 and 3 AM ET Sunday morning for most weekends.</p> <p>The back end goes through numerous updates typically beginning at 11:00PM Saturday through 4:00AM Sunday. Typically traffic is handled in such a way that there is very little impact to customers, and any impact which does occur does so in the 15 minute intervals mentioned previously. Having said this as this entire time is reserved for maintenance we inform customers of the possibility of experiencing issues throughout this time period so that if there are any issues which occur during maintenance we have a time window to troubleshoot and perform measures to resolve. On Sunday, the maintenance is really relegated to just ABR</p>
All	ASMX	Are the Web Services versions of the APIs ASMX based?	No. All Web Services are XML based. This is described in the section 'UPS OnLine Tools Technologies' of every developer's guide
All	Web Services - Empty folders within the documentation zip file.	The ship_dev_guide and Ship_Reference_guide folders have some sub folders that look like they should contain some code examples / samples but they are all empty? XML_Samples Visual_Basic Code_samples All empty?	Unfortunately code samples are not provided with the Shipping API - Web Services version. The reason being is that a WSDL is included which provides all of the necessary information needed to successfully implement the API. These folders are typically utilized in the XML version of the APIs as there is no WSDL present. If the customer wishes to view the samples contained in the Shipping API they can download the documentation by logging into UPS.com, navigating to the UPS Developer Kit, and then clicking on the Shipping API link.
All	Pointing to the wrong URL for API	I keep getting, "XML document is well formed but the document is not valid."	The "XML document is well formed but the document is not valid" error message is generally returned when an element in the XML request does not adhere to the

API	Category	Question	Answer
		error message. What am I doing wrong?	<p>formatting defined within the Xpath section of that API's developer guide. When the API returns this error it indicates the field which is not valid in the ErrorLocationElementName element in the XML response. When we test the XML provided by you earlier in this email chain we are able to receive a successful response. This would indicate that you may be posting to an incorrect URL. The error message returned from the API should have contained a line similar to the following:</p> <pre>&lt;ErrorLocationElementName&gt;XPATh TO FIRST ELEMENT WHERE XML DOESN'T MATCH EXPECTED FORMAT&lt;/ErrorLocationElementName&gt;</pre> <p>As previously stated, this element is included in the XML error response to point you to the element of the posted request which is not valid for the Tool. When further clarification is needed you can look up the element in question in the Xpath section of the Developer Guide for the particular API. If this element lists another API's request such as "TrackRequest" it would indicate that you are posting to that API's URL and need to adjust the URL you are sending your XML to.</p>
All	Phone Support	Is phone support provided for the UPS Developer Kit - Developer APIs? If so, what is the number and what are the hours of operation?	<p>Yes. Phone support is provided at 1st Level only and for basic API questions. This includes integration questions and production questions. However, customers' questions that cannot be answered verbally will be directed to the email support form at ups.com to escalate to 3rd level via email.</p> <p>Phone Support Hours: M-F 730am- 9pm EST Sa-Su 9am - 6pm EST 800.247.9035</p>
All	Examples of API Implementations	Are there any examples of implementations that we can review to understand how best to utilize the APIs?	<p>We do not share customer implementations of our tools amongst customers. On occasion we do post case studies on ups.com and articles in customer-facing newsletters, but that is only after gaining permission from the customer and working with Legal, Customer Communications, etc.</p> <p>Please understand that the XML tool is only data, which is transparent to the end user. How the developer implements the tool and presents results back to the end user can vary from web site to web site. These web sites may not highlight the full functionality of the tool. We need to be able to describe the value proposition of the tool without depending on another customer's usage.</p>

API	Category	Question	Answer
All	Code languages supported	Do the APIs support PHP or Perl with code sample within the Developer Guides or the developer kit zip files?	Yes. PHP and Perl sample code is available (ShippingGROUNDFREIGHTWebService\CodeSamples\Freight\)..